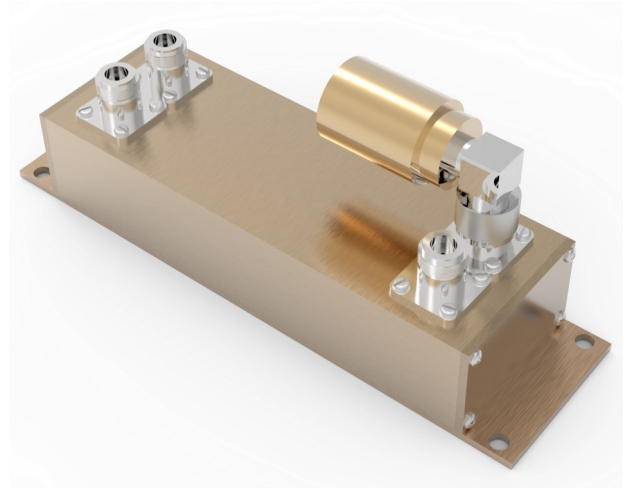


CP49-FF-YY-XX Series

Comprod offers a full line of Hybrid Directional Couplers. The full range of decoupling values allows balanced power division and distribution. These couplers are bidirectional and are well suited for two-way communications systems. A full line of Tri-Band models is available for distribution of VHF, UHF and 800 MHz via a single transmission line. Standard finish is gold alodine.

- Low Insertion Loss
- High Isolation between ports
- Excellent VSWR
- Tri-Band and other models are available and customizable. Please contact a Comprod technical support technician for consultation.



Model With No Load	Model With 5 Watt Load	Model With 5 Watt Load	Frequency Range	Decoupling (dB)	ThruLine Loss (dB)	Power Split Ratio (%)
49-13-03-00	49-13-03-05	49-13-03-25	138-174MHz	-3 - 0.7	-3.0 - 0.3	50 / 0
49-13-48-00	49-13-48-05	49-13-48-25	138-174MHz	-4.8 - 0.7	-4.8 - 0.3	67 / 33
49-13-06-00	49-13-06-05	49-13-06-25	138-174MHz	-6.0 - 1.0	-1.2 - 0.2	75 / 25
49-13-07-00	49-13-07-05	49-13-07-25	138-174MHz	-7.0 - 1.0	-1.0 - 0.2	80 / 20
49-13-10-00	49-13-10-05	49-13-10-25	138-174MHz	-10.0 - 1.0	-0.5 - 0.2	90 / 10
49-13-20-00	49-13-20-05	49-13-20-25	138-174MHz	-20.0 - 1.0	-0.3 max.	99 / 1
49-38-03-00	49-38-03-05	49-38-03-25	380-512MHz	-3 - 0.7	-3.0 - 0.3	50 / 50
49-38-48-00	49-38-48-05	49-38-48-25	380-512MHz	-4.8 - 0.7	-4.8 - 0.3	67 / 33
49-38-06-00	49-38-06-05	49-38-06-25	380-512MHz	-6.0 - 1.0	-1.2 - 0.2	75 / 25
49-38-07-00	49-38-07-05	49-38-07-25	380-512MHz	-7.0 - 1.0	-1.0 - 0.2	80 / 20
49-38-10-00	49-38-10-05	49-38-10-25	380-512MHz	-10.0 - 1.0	-0.5 - 0.2	90 / 10
49-38-15-00	49-38-15-05	49-38-15-25	380-512MHz	-15.0	-0.2 max.	97 / 3
49-38-20-00	49-38-20-05	49-38-20-25	380-512MHz	-20.0	-0.2 max.	99 / 1
49-38-30-00	49-38-30-05	49-38-30-25	380-512MHz	-30.0	-0.2 max.	99.9 / 0.1
49-74-03-00	49-38-03-05	49-38-03-25	746-960MHz	-3 - 0.7	-3.0 - 0.3	50 / 50
49-74-48-00	49-38-48-05	49-38-48-25	746-960MHz	-4.8 - 0.7	-4.8 - 0.3	67 / 33
49-74-06-00	49-38-06-05	49-38-06-25	746-960MHz	-6.0 - 1.0	-1.2 - 0.2	75 / 25
49-74-07-00	49-38-07-05	49-38-07-25	746-960MHz	-7.0 - 1.0	-1.0 - 0.2	80 / 20
49-74-10-00	49-38-10-05	49-38-10-25	746-960MHz	-10.0 - 1.0	-0.5 - 0.2	90 / 10
49-74-15-00	49-38-15-05	49-38-15-25	746-960MHz	-15.0	-0.2 max.	97 / 3
49-74-20-00	49-38-20-05	49-38-20-25	746-960MHz	-20.0	-0.2 max.	99 / 1
49-74-30-00	49-38-30-05	49-38-30-25	746-960MHz	-30.0	-0.2 max.	99.9 / 0.1