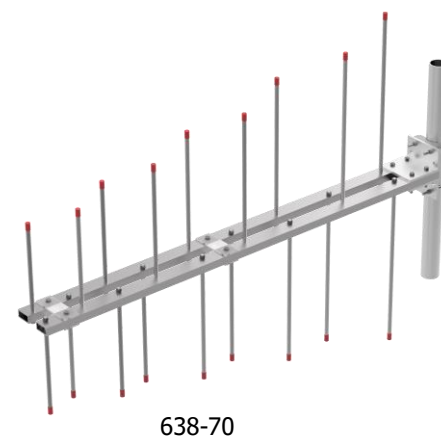


VHF Log Periodic Series Antennas

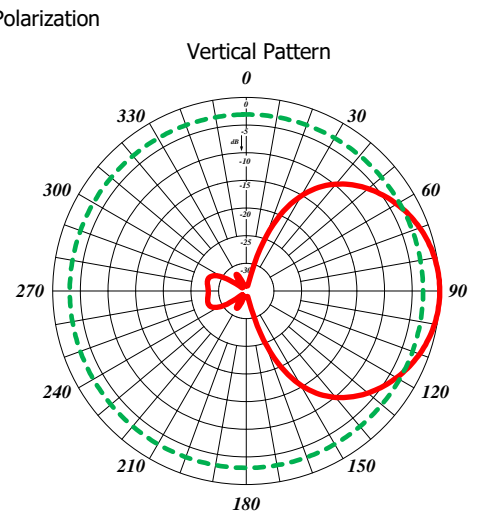
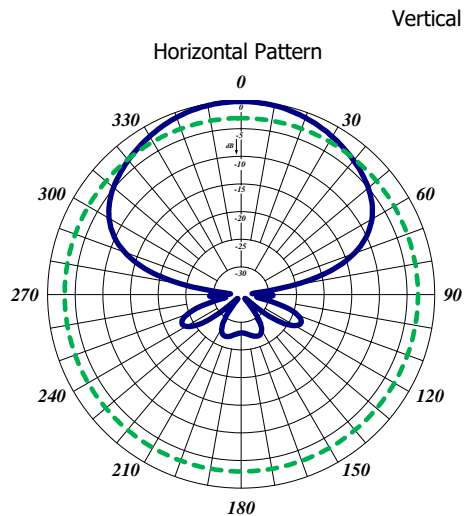
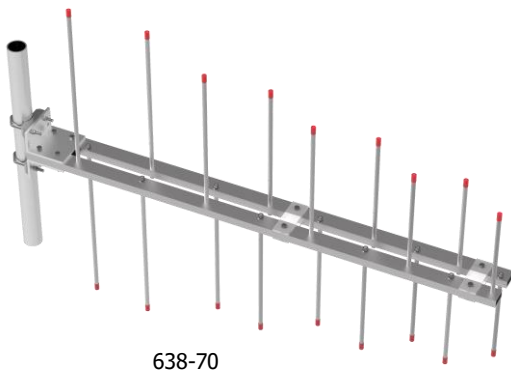
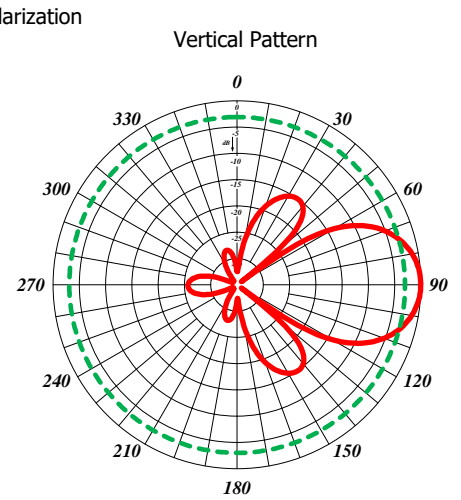
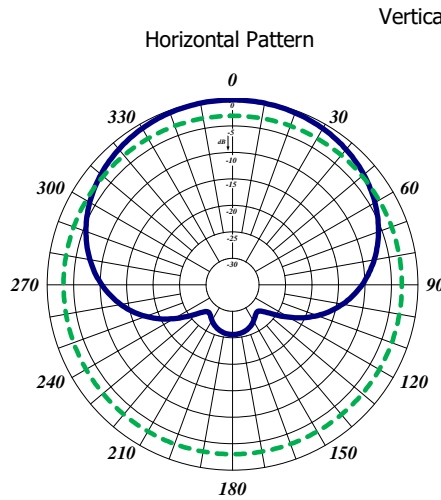
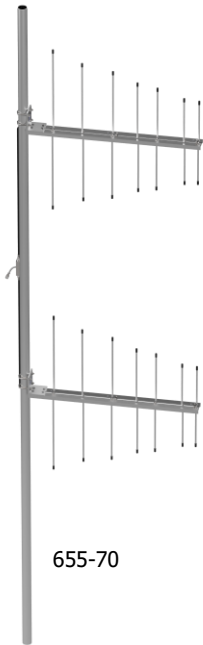
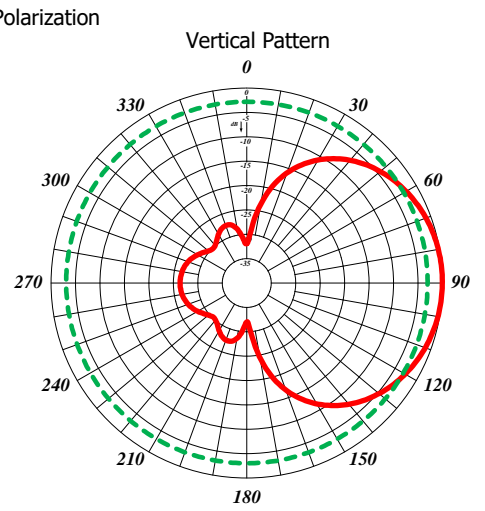
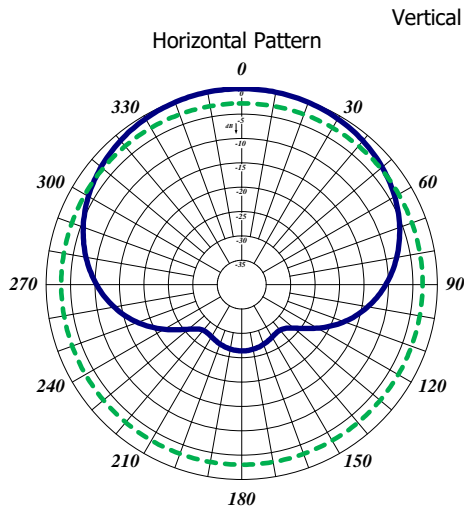
The Log Periodic Antennas are available in VHF and UHF configurations. These antennas have an extremely good front-to-back ratio. They are wideband and are ideal for base station or in-building applications. These antennas are great for providing underground coverage within garages. Performance is constant throughout the band.

- Each antenna has a rugged design to withstand harsh environmental conditions.
- The mounting hardware supplied will permit either vertical or horizontal polarization.
- DC ground for lightning protection.
- Please contact our Technical Support team for consultation.

Electrical Specifications	635-70	655-70	638-70
Frequency Range, MHz	138-174	138-174	138-174
Nominal Gain, dBd	6.0	9.0	8.0
Bandwidth: 1.5:1 VSWR, MHz	42	42	36
Polarization	Vertical or Horizontal		
Horizontal Beamwidth (Vert. Pol.)	106°	106°	75°
Vertical Beamwidth (Vert. Pol.)	60°	30°	55°
Front to Back, dB	25	25	25
Pattern	Directional		
Power Rating, Watts	500	500	500
Nominal Impedance, Ohms	50	50	50
Lightning Protection	DC Ground		
Standard Termination	Type N Male		
Mechanical Specifications	635-70	655-70	638-70
Length, in (mm)	42 (1067)	42 (1067)	60 (1524)
Width, in (mm)	44 (1118)	44 (1118)	44.5 (1130)
Weight, lbs. (kg)	8 (3.6)	16 (7.2)	16.8 (7.8)
Rated Wind Velocity, No Ice, mph (km/h)	158 (254)	158 (254)	150 (241)
Rated Wind Velocity, 0.5" (13mm) ice, mph (km/h)	108 (173)	108 (173)	108 (173)
Lateral Thrust @ c, wind, lbs. (kg)	31 (14)	31 (14)	47.5 (21.5)
Torsional Moment @ 100 mph, ft.*lb (kg*m)	56 (7.8)	N/A	121 (16.7)
Projected Area, ft² (m²)	0.86 (0.08)	0.86 (0.08)	1.26 (0.120)
Mounting Information: (clamp included) for pipe size O.D. in (mm)	1" to 2.5" (64)	1" to 2.5" (64)	1" to 2.5" (64)



* See appendix for ordering information (page 236) *

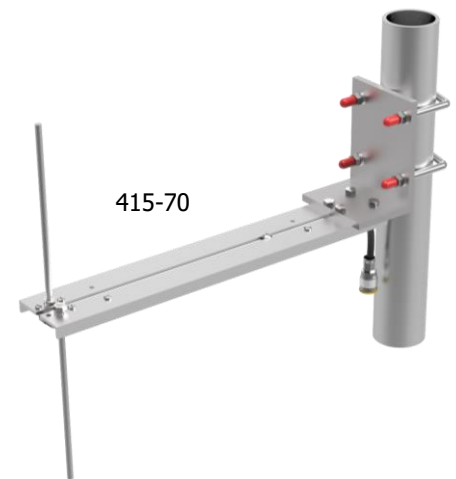


UHF Log Periodic Series Antennas

The Log Periodic Antennas are available in VHF and UHF configurations. These antennas have a very high front-to-back ratio. They are wideband and are ideal for base station or in-building applications. We have had great success with these antennas providing underground coverage within garages. Performance is constant throughout the band.

- Each antenna has a rugged design to withstand harsh environmental conditions.
- The mounting hardware supplied will permit either vertical or horizontal polarization.
- DC ground for lightning protection.
- Please contact our Technical Support team for consultation.

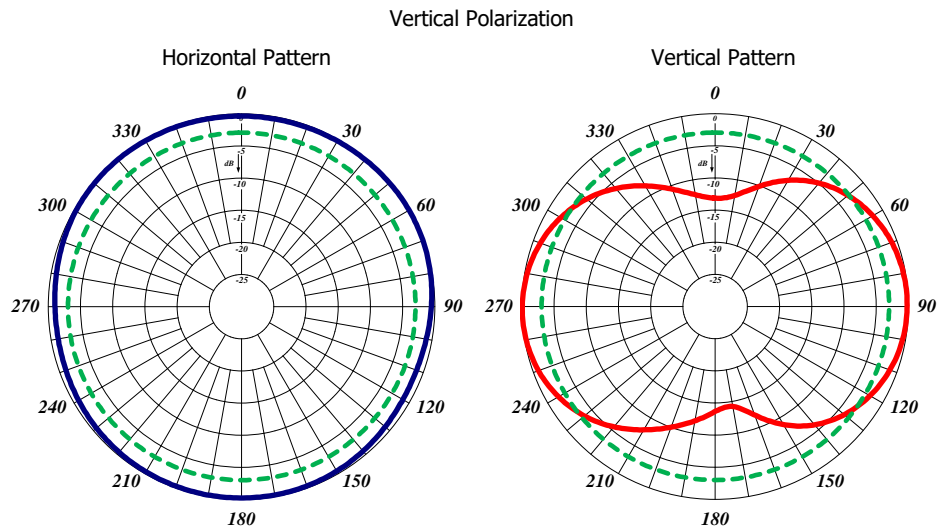
Electrical Specifications	415-70	465-70
Frequency Range, MHz (in splits)	406-512	406-512
Nominal Gain, dBd	Unity	6.0
Bandwidth: 1.5:1 VSWR, MHz	40	64
Polarization	Vertical or Horizontal	
Horizontal Beamwidth (Vert. Pol.)	N/A	106°
Vertical Beamwidth (Vert. Pol.)	84°	60°
Front to Back, dB	N/A	20
Pattern	Directional	
Power Rating, Watts	250	250
Nominal Impedance, Ohms	50	50
Lightning Protection	DC Ground	
Standard Termination	Type N Male	
Mechanical Specifications	415-70	465-70
Length, in (mm)	18 (457)	15 (381)
Width, in (mm)	14.3 (362)	16 (406)
Weight, lbs. (kg)	2.6 (1.2)	3.3 (1.47)
Rated Wind Velocity, No Ice, mph (km/h)	160 (257)	150 (241)
Rated Wind Velocity, 0.5" (13mm) ice, mph (km/h)	120 (193)	110 (177)
Lateral Thrust @ c, wind, lbs. (kg)	12 (5.4)	14 (6.4)
Torsional Moment @ 100 mph, ft.*lb (kg*m)	6.3 (0.88)	6.4 (0.89)
Projected Area, ft ² (m ²)	0.44 (0.04)	0.50 (0.05)
Mounting Information: Max Pipe Size (mm)	1" to 2.5" (64)	1" to 2.5" (64)



* See appendix for ordering information of different frequency splits (page 236) *



415-70



465-70

