

**SAFETY, PERFORMANCE
AND DEPENDABILITY**

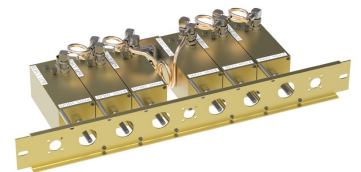
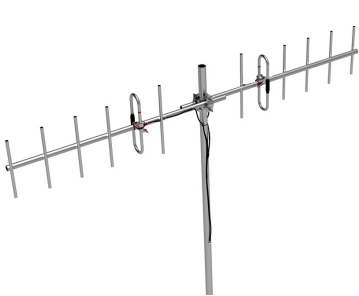
WHEREVER YOU ARE



Antennas and Filters for Railroad & Transportation Communications

***Ensuring high availability and reliability
for your communication systems***

The transportation operators are faced with a growing number of challenges on a daily basis. Comprod understands their reliance on RF networks as a key element to achieve the highest standards of compliance and safety, and offers a complete range of products delivering mobile communications or coverage along highways, railway transportation and commuter services as well as in-building or remote solutions.



 **COMPROD**
Simplifying RF Solutions
www.comprodcom.com

Tel: US 1.877.825.2007 / CAN 1.800.603.1454
Email: sales@comprodcom.com
Fax: 1.800.554.1033

COMPROD INC.

High Quality • Superior Performance • Engineering Design • Excellent Technical Support
Trusted by over 1,000 customers worldwide

As a market leader in the design and manufacture of RF Antennas, Filtering Systems and In-Building solutions, Comprod puts innovation and customer satisfaction at the core of its business strategy. Over the past 40 years, we have set ourselves apart by adapting our offering to our client needs, while anticipating future industry trends and opportunities.

The products featured in this catalog are provided specifically for the Railroad industry, and have been installed on the Tier One Railroad RF infrastructure across North America. Our antennas and filters are known for their robust design and long-term reliability. We provide products and services to both transport and commuter railroad clients. Offering full design customization capabilities, we can adapt and optimize any product to meet unique electrical or mechanical performance requirements (e.g. higher front-back ratio; smaller size footprint; black anodization, etc.)

Our North American manufacturing facilities are certified under ISO 9001:2008 Quality Assurance standards.



Comprod's Headquarter Facilities, Boucherville, QC, Canada

TABLE OF CONTENTS

ANTENNAS

Ground Plane Antennas.....	4
530 Series Low Band Exposed Dipole Antennas.....	6
870 Series VHF or 220 MHz Exposed Dipoles.....	8
860 Series 160 and 220 MHz Exposed Dipoles.....	10
770 Series UHF Exposed Dipoles.....	12
290 Series 220 MHz Yagi Antennas.....	14
Back to Back Dual Yagi Antenna Array.....	16
UHF Yagi Antennas Series.....	18
980 Series Yagi Antennas.....	20
470 Series 220 MHz Corner Reflector Antennas.....	22
490 Series Heavy-Duty Yagi Antennas.....	24
790 Series Enclosed Dipoles.....	26
Radome Yagi Antennas Series.....	28

TRANSIT ANTENNAS

VHF or 220 MHz Transit Antennas.....	30
UHF Transit Antennas.....	31
800 MHz Transit Antennas.....	32

FILTERS

F-33370 Filter.....	33
66-FF-2P Series 2" Cavity Duplexers.....	34
66-FF-44 Series 4" Cavity Duplexers.....	35
66-FF-46 Series 4" Cavity Duplexers.....	36
2" Cavity Filters.....	37
3" Cavity Band Pass Duplexer.....	38

Ground Plane Antenna Series

The Ground Plane Antenna Series are available in VHF and UHF configurations. These omnidirectional antennas are either wide band unity or 2-3 dBd gain antennas. They are constructed from high strength, corrosion-resistant aluminum alloy and stainless steel. All of our antennas can be completely customized to your particular applications.

- Each antenna has a rugged design to withstand the most extreme environmental conditions.
- Wide frequency band applications
- The mounting hardware supplied will permit 0.75" to 2.38" O.D. pipe installation.
- DC ground for lightning protection
- Ideal for mounting on buildings



267-70

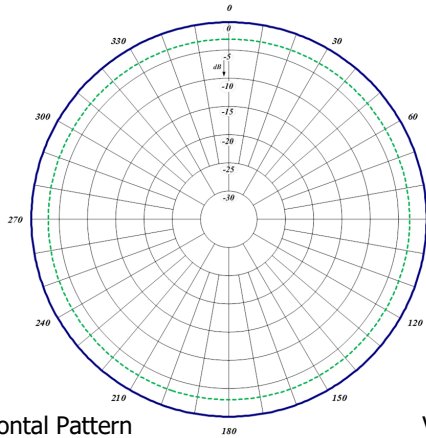
Electrical Specifications	265-70	266-70	267-70	268-70
Frequency Range, MHz	118-174	118-174	118-136	406-470
Nominal Gain, dBd	Unity	2-3.0	Unity	2-3.0
Bandwidth 1.5:1 VSWR, MHz (% Ctr. Freq.)	6%	1%	15.6% (2:1)	1%
Tuning	Field Adj.	Field Adj.	Fixed	Field Adj.
Polarization	Vertical	Vertical	Vertical	Vertical
Vertical Beamwidth (Ver.Pol.)	80°	40°	71°	38°
Pattern	Omni	Omni	Omni	Omni
Power Rating, Watts	300	250	250	100
Nominal Impedance, Ohms	50	50	50	50
Lightning Protection	DC Ground	DC Ground	DC Ground	DC Ground
Standard Termination	Type N Male	Type N Male	Type N Male	Type N Male

Mechanical Specifications	265-70	266-70	267-70	268-70
Max. Length, in (mm)	58 (1473)	108 (2743)	67 (1702)	46 (1168)
Width, in (mm)	55 (1397)	46 (1168)	26.5 (673)	20 (508)
Weight, lbs (kg)	6.8 (3.3)	6.5 (3.0)	6.0 (2.7)	1.5 (0.7)
Rated Wind Velocity, no ice, mph (km/h)	150 (241)	125 (201)	125 (201)	125 (201)
Rated Wind Velocity, 0.5" (13mm) ice, mph (km/h)	140 (225)	85 (137)	110 (177)	85 (137)
Lateral Thrust @ 100 mph wind, lbs (kg)	31.8 (14.4)	40 (18.1)	24 (10.7)	7.3 (3.3)
Bending Moment @ top clamp: 100 mph, ft*lb (kg*m)	41 (5.7)	94 (13)	28 (3.9)	12 (1.6)
Projected Area, ft² (m²)	1.2 (0.110)	1.57 (0.146)	0.88 (0.082)	0.27 (0.03)
Mounting Hardware	167-85 Clamp	167-85 Clamp	167-85 Clamp	167-85 Clamp

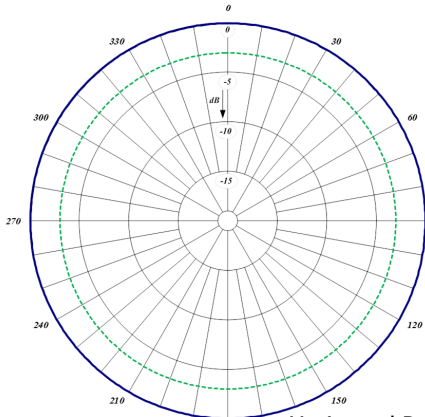
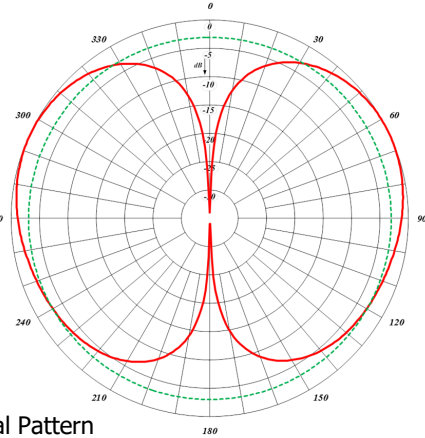
Order Information	Black Anodized	406-430	430-450	450-470	118-136	136-148	148-174
265-70	N/A	N/A	N/A	N/A	265-70*1	265-70*2	265-70*3
266-70	N/A	N/A	N/A	N/A	266-70*1	266-70*2	266-70*3
267-70	267-70B	N/A	N/A	N/A	267-70	N/A	N/A
268-70	N/A	268-70*1	268-70*2	268-70*3	N/A	N/A	N/A



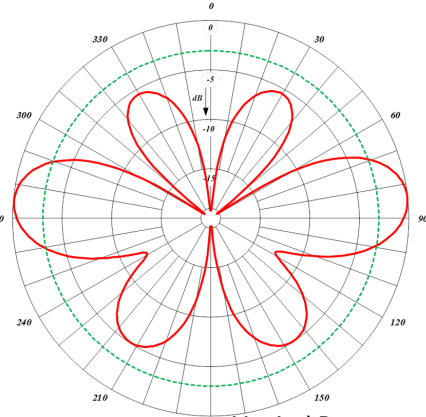
265-70 Horizontal Pattern



265-70 Vertical Pattern

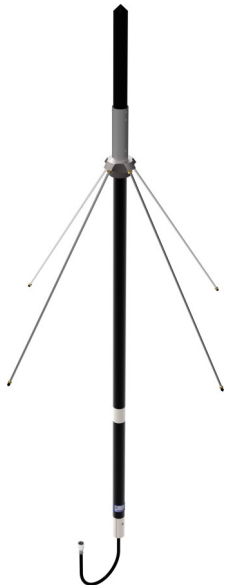


266-70 Horizontal Pattern

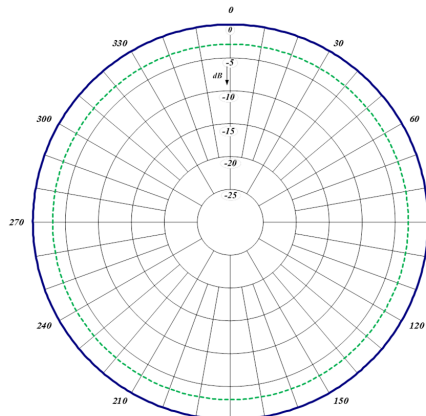


266-70 Vertical Pattern

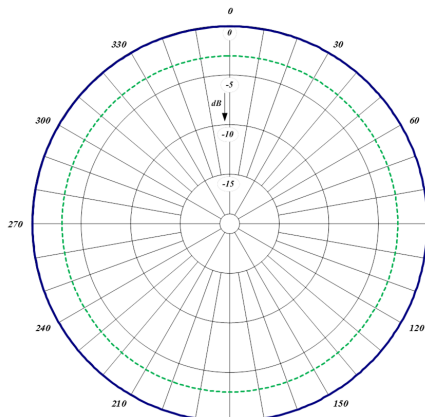
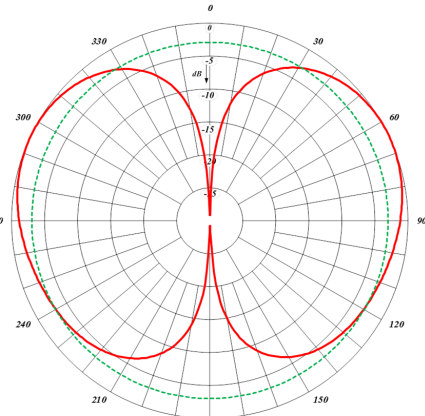
266-70



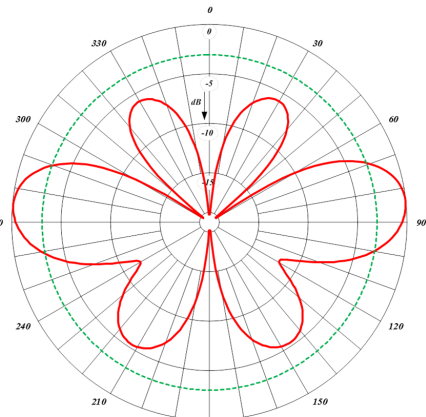
267-70 Horizontal Pattern



267-70 Vertical Pattern

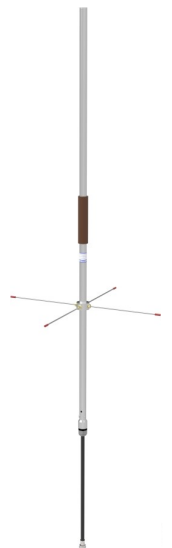


268-70 Horizontal Pattern



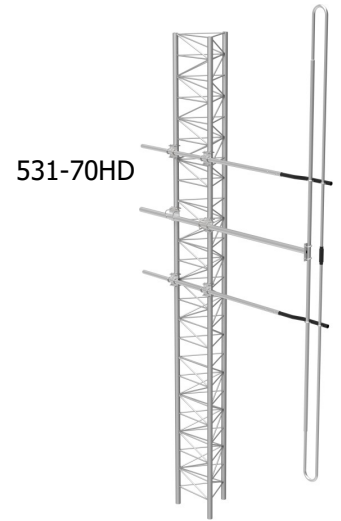
268-70 Vertical Pattern

268-70



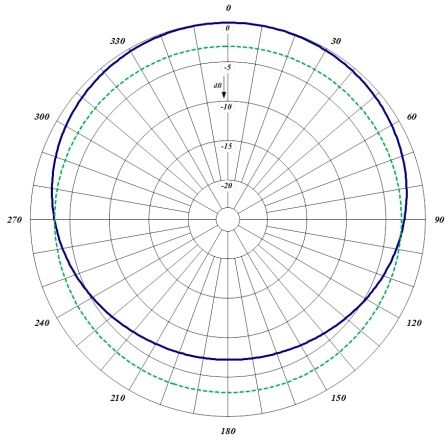
530 Series Low Band Exposed Dipole Antenna

The Low Band Exposed Dipole Antenna Series are available in our standard or heavy-duty construction. These exposed dipole antennas come in both single and dual configurations, depending on the gain required. They are constructed from high strength, corrosion-resistant aluminum alloy, hot galvanized steel mounting hardware, and use unique PVC off-set support arms. Our heavy-duty versions have dual support braces and use a superior anti-torque support. All components are oversized.

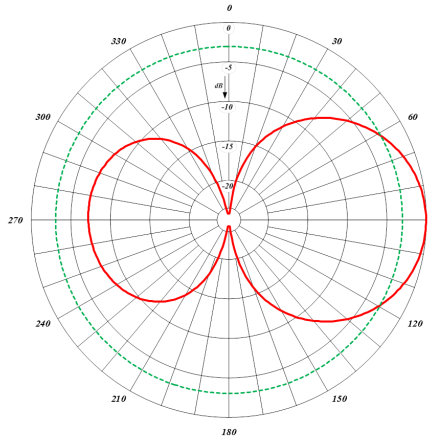


- Each antenna has a rugged design to withstand the most extreme environmental conditions.
- Supplied with anti-torque supports
- DC ground for lightning protection
- Can be black anodized coating for enhanced anti-corrosion and de-icing properties

Electrical Specifications	531-70	531-70HD	532-70	532-70HD				
Frequency Range, MHz	30-76	30-76	30-76	30-76				
Nominal Gain, dBd	2.5	2.5	5.5	5.5				
Bandwidth 1.5:1 VSWR, MHz	7%	7%	7%	7%				
Polarization	Vertical	Vertical	Vertical	Vertical				
Pattern	Unidirectional	Unidirectional	Unidirectional	Unidirectional				
Power Rating, Watts	300	300	300	300				
Nominal Impedance, Ohms	50	50	50	50				
Lightning Protection	DC Ground	DC Ground	DC Ground	DC Ground				
Standard Termination	Type N Male	Type N Male	Type N Male	Type N Male				
Mechanical Specifications	531-70	531-70HD	532-70	532-70HD				
Length @ 30 MHz, in (mm)	189 (4800)	189 (4800)	472 (11989)	472 (11989)				
Width, in (mm)	87 (2210)	87 (2210)	87 (2210)	87 (2210)				
Weight, lbs (kg)	37 (17)	43 (19.5)	79 (36)	91 (41)				
Rated Wind Velocity, no ice, mph (km/h)	143 (230)	200 (322)	143 (230)	200 (322)				
Rated Wind Velocity, 0.5" (13mm) ice, mph (km/h)	98 (158)	160 (258)	98 (158)	160 (258)				
Lateral Thrust @ 100 mph, wind, lbs (kg)	133 (60.8)	160 (72.3)	266 (121.6)	320 (144.6)				
Projected Area, ft ² (m ²)	4.98 (0.46)	5.94 (0.55)	9.96 (0.92)	11.88 (1.10)				
Order Information	30-32 MHz	32-34 MHz	34-36 MHz	36-38 MHz	38-41 MHz	41-44 MHz	44-47 MHz	47-50 MHz
531-70	531-70*1	531-70*2	531-70*3	531-70*4	531-70*5	531-70*6	531-70*7	531-70*8
532-70	532-70*1	532-70*2	532-70*3	532-70*4	532-70*5	532-70*6	532-70*7	532-70*8
531-70HD	531-70HD*1	531-70HD*2	531-70HD*3	531-70HD*4	531-70HD*5	531-70HD*6	531-70HD*7	531-70HD*8
532-70HD	532-70HD*1	532-70HD*2	532-70HD*3	532-70HD*4	532-70HD*5	532-70HD*6	532-70HD*7	532-70HD*8

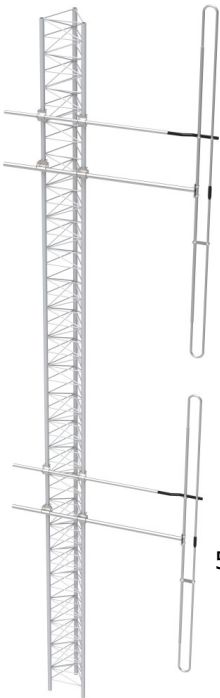
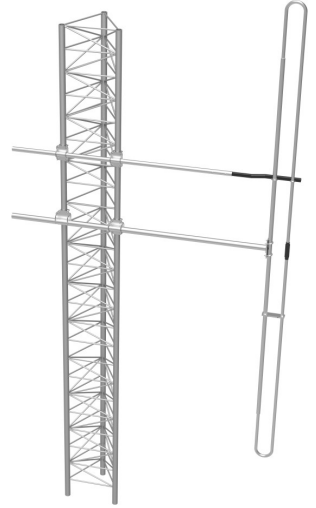


Horizontal Pattern

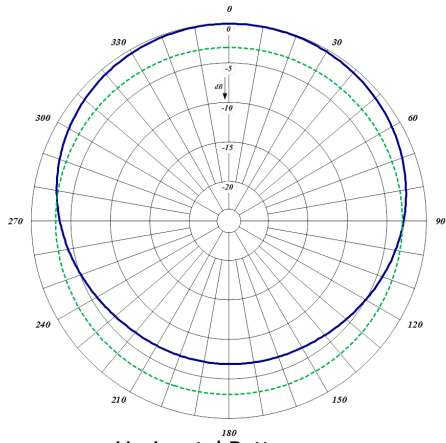


Vertical Pattern

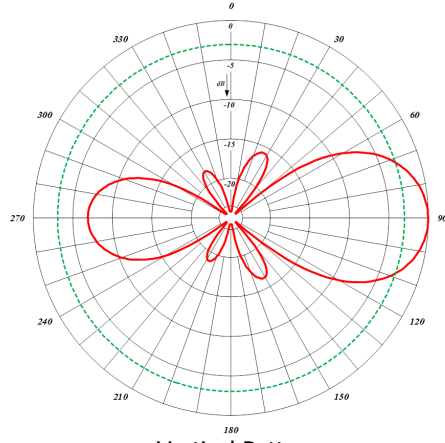
531-70



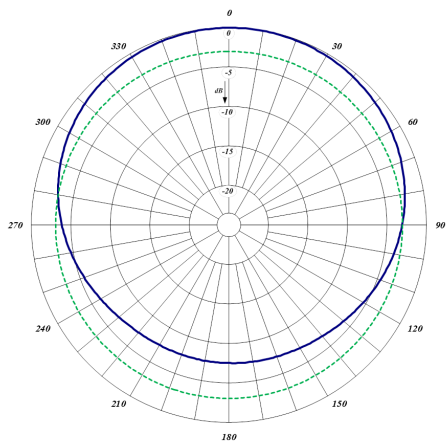
532-70



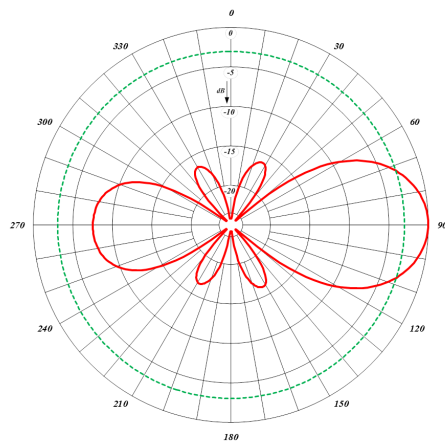
Horizontal Pattern



Vertical Pattern

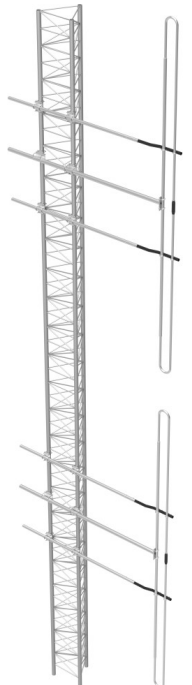


Horizontal Pattern



Vertical Pattern

532-70HD

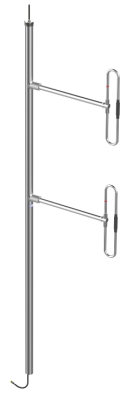


870 Series VHF or 220 MHz Exposed Dipoles

The 870 Series VHF or 220 MHz Exposed Dipoles are available in 1, 2, 4, 8 dipole configurations. All of our antennas can be completely customized to your particular applications. Our antennas can be black anodized. Adjustable or fixed, side mount or top mount, and heavy-duty versions are available.

- Each antenna is offered in a 1/4 or 3/8 wave spacing version.
- The 87XA-70 has external cabling and a field-adjustable pattern.
- The 87XF-70 has internal cabling and fixed dipole-mast spacing.
- Heavy-duty versions are available. Please contact Comprod Inc. Technical support.

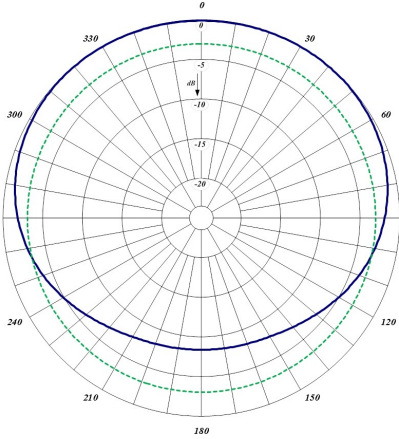
872F-70



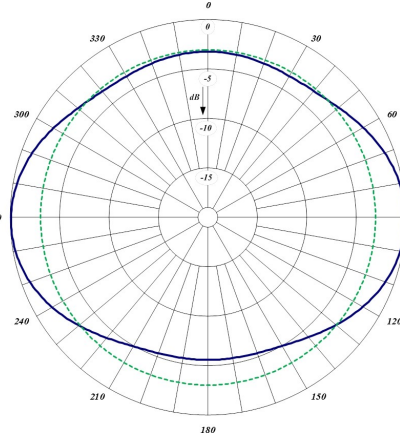
Electrical Specifications	871F-70	872F-70	874F-70	871F-70-220	872F-70-220	874F-70-220
Frequency Range, MHz	138-174	138-174	138-174	215-225	215-225	215-225
Nominal Gain, dBd	2.0-2.5	5.0-5.5	8.0-8.5	2.0-2.5	5.0-5.5	8.0-8.5
Number of Dipoles	1	2	4	1	2	4
Bandwidth 1.5:1 VSWR, MHz	36	36	36	10	10	10
Polarization	Vertical	Vertical	Vertical	Vertical	Vertical	Vertical
Pattern	Offset	Offset	Offset	Offset	Offset	Offset
Power Rating, Watts	200	450	450	200	300	500
Nominal Impedance, Ohms	50	50	50	50	50	50
Lightning Protection	DC Ground	DC Ground	DC Ground	DC Ground	DC Ground	DC Ground
Standard Termination	Type N Male	Type N Male	Type N Male	Type N Male	Type N Male	Type N Male

Mechanical Specifications	871F-70	872F-70	874F-70	871F-70-220	872F-70-220	874F-70-220
Length, in (mm)	78 (1981)	162 (4115)	246 (6248)	66 (1676)	112 (2845)	200 (5080)
Width (1/2 Wave Spacing), in (mm)	54 (1372)	54 (1372)	55 (1397)	31 (787)	31 (787)	32 (813)
Weight, lbs (kg)	16 (7.3)	31 (14.1)	93 (42)	12.5 (5.7)	21 (9.5)	51 (23)
Rated Wind Velocity, no ice, mph (km/h)	150 (241)	145 (3341)	120 (193)	165 (266)	150 (241)	145 (233)
Rated Wind Velocity, 0.5" (13mm) ice, mph (km/h)	145 (217)	135 (217)	95 (153)	140 (225)	130 (209)	105 (177)
Lateral Thrust @ 100 mph wind, lbs (kg)	18 (2.5)	205 (28.4)	1364 (188.7)	40 (18)	66 (30)	143 (65)
Bending Moment @ top clamp: 100 mph, ft*lb (kg*m)	82 (11)	420 (58)	1437 (199)	58 (8)	150 (21)	610 (84)
Projected Area, ft ² (m ²)	1.7 (0.16)	3.5 (0.33)	7 (0.65)	1.5 (0.14)	2.6 (0.24)	5.5 (0.51)
Mounting Information Mast O.D.	1.9" (48 mm)	2.4" (61 mm)	2.9" (73 mm)	1.9" (48 mm)	1.9" (48 mm)	2.4" (60 mm)

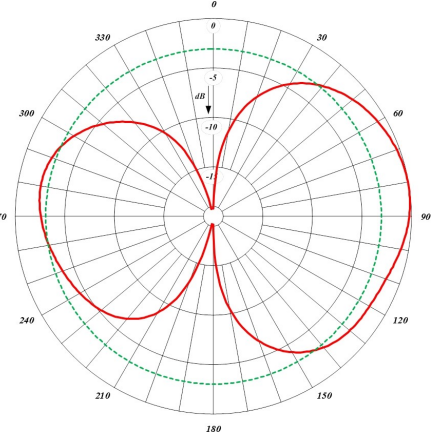
VHF				220 MHz			
Heavy-Duty	Side Mount	Top Mount	Black Anodized	Heavy-Duty	Side Mount	Top Mount	Black Anodized
871F-70HD	871F-70SM	871F-70TM	871F-70HDB	871F-70-220HD	871F-70-220SM	871F-70-220TM	871F-70-220HDB
872F-70HD	872F-70SM	872F-70TM	872F-70HDB	872F-70-220HD	872F-70-220SM	872F-70-220TM	872F-70-220HDB
874F-70HD	874F-70SM	874F-70TM	874F-70HDB	874F-70-220HD	874F-70-220SM	874F-70-220TM	874F-70-220HDB



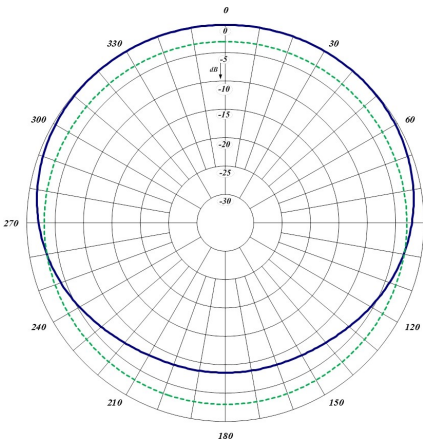
871F-70-220 Quarterwave Spacing Horizontal



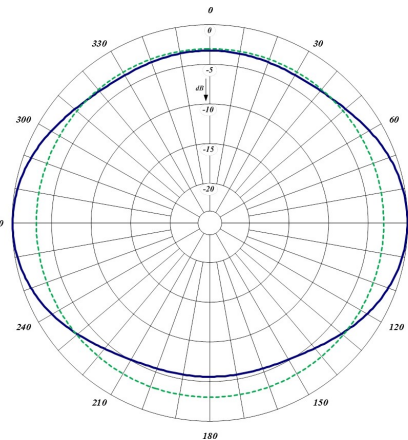
Halfwave Spacing Horizontal



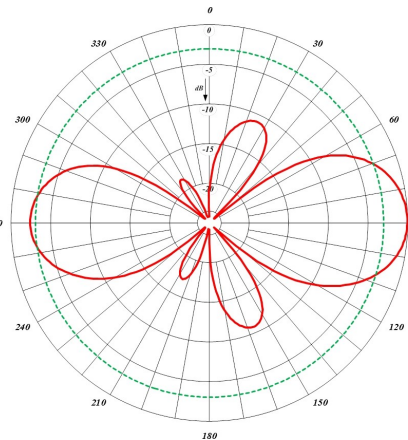
Halfwave Spacing Vertical



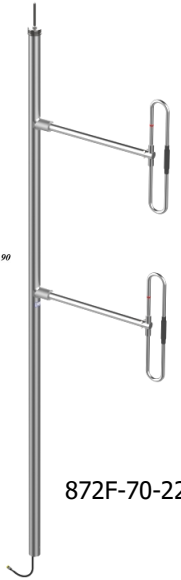
Quarterwave Spacing Horizontal



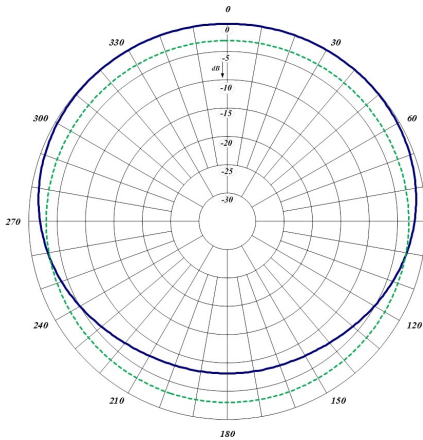
Halfwave Spacing Horizontal



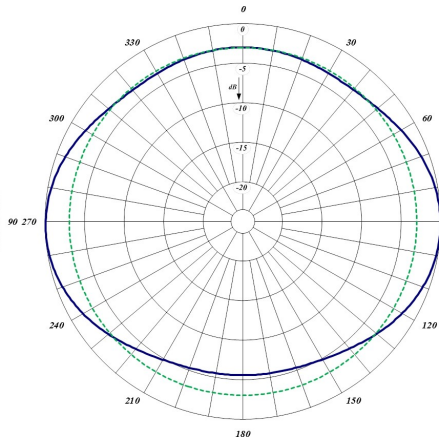
Halfwave Spacing Vertical



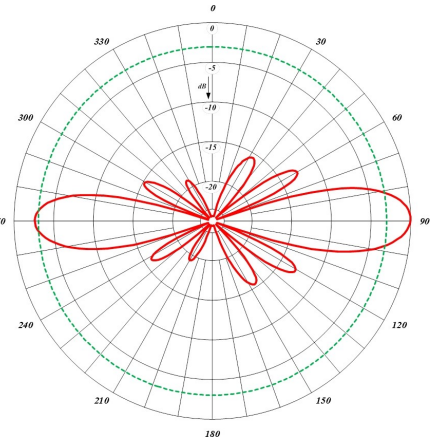
872F-70-220



874F-70-220 Quarterwave Spacing Horizontal



Halfwave Spacing Horizontal



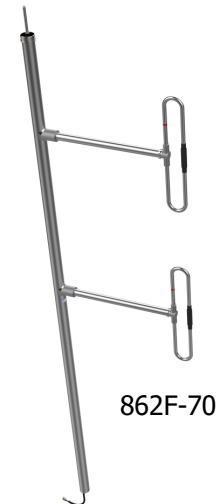
Halfwave Spacing Vertical

160 and 220 MHz EXPOSED DIPOLES

860 Series 160/220 MHz Exposed Dipoles

The 860 Series consists of Dual Band Exposed Dipoles and is available in 1, 2 and 4 dipole configurations. All of our antennas can be completely customized to your particular applications. Our antennas can be black anodized, side mount or top mount, and are available in many versions of heavy-duty ruggedness.

- The 86XF-70 has an internal cabling and fixed dipole-mast spacing.
- Heavy-duty versions are available. Please contact a Comprod Technical support technician for consultation.



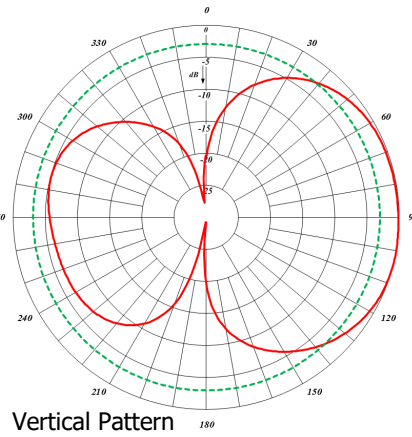
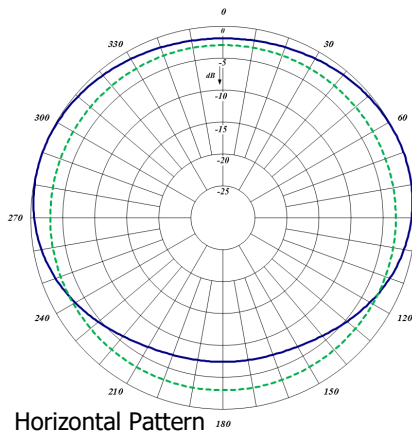
Electrical Specifications	861F-70	862F-70	866F-70SM
Frequency Range, MHz	158-168 and 215-225	158-168 and 215-225	158-168 and 215-225
Nominal Gain, dBd	2.0-2.5	5.0-5.5	5.0-5.5
Number of Elements	1	2	2 sets of 2
Bandwidth: 1.5:1 VSWR, MHz	10	10	10
Polarization	Vertical	Vertical	Vertical
Pattern	Offset	Offset	Offset
Power Rating, Watts	300	300	300
Nominal Impedance, Ohms	50	50	50
Lightning Protection	DC Ground	DC Ground	DC Ground
Standard Termination	Type N Male	Type N Male	Type N Male

Mechanical Specifications	861F-70	862F-70	866F-70SM
Length, in (mm)	77 (1975)	112 (2845)	240 (6096)
Width (1/2 Wave Spacing), in (mm)	31 (787)	31 (787)	36 (914)
Weight, lbs (kg)	14.5 (6.5)	21 (9.5)	55 (25)
Rated Wind Velocity, no ice, mph (km/h)	150 (241)	150 (241)	155 (249)
Rated Wind Velocity, 0.5" (13mm) ice, mph (km/h)	130 (209)	130 (209)	125 (201)
Lateral Thrust @ 100 mph, wind, lbs (kg)	66 (30)	66 (30)	172 (78)
Projected Area, ft ² (m ²)	2.6 (0.24)	2.6 (0.24)	5.8 (0.54)
Mounting Information	Mast 1.9" (48 mm)	Mast 1.9" (48 mm)	Mast 2.88" (73 mm)

160 and 220 MHz EXPOSED DIPOLES

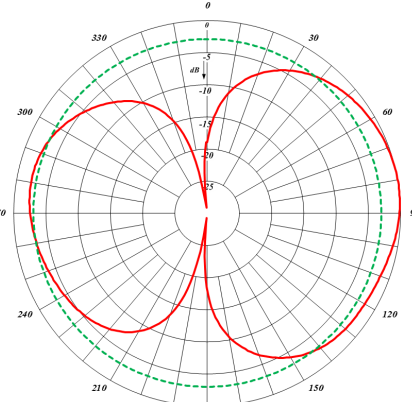
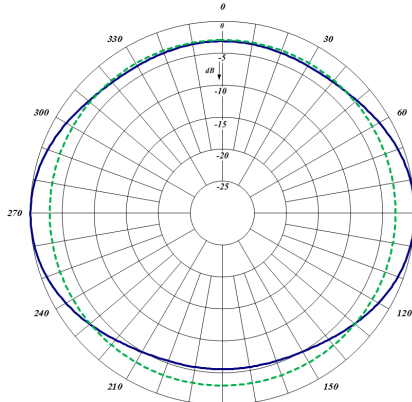


861F-70 at 160 MHz Horizontal Pattern



Vertical Pattern

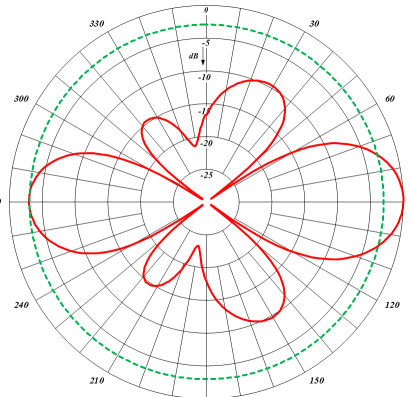
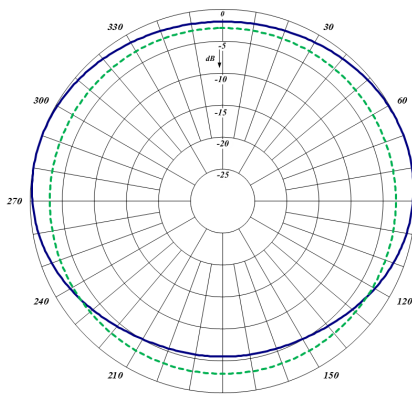
861F-70 at 220 MHz Horizontal Pattern



Vertical Pattern

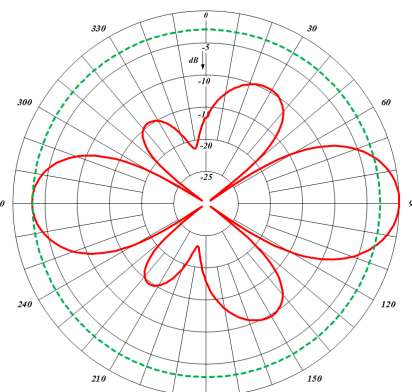
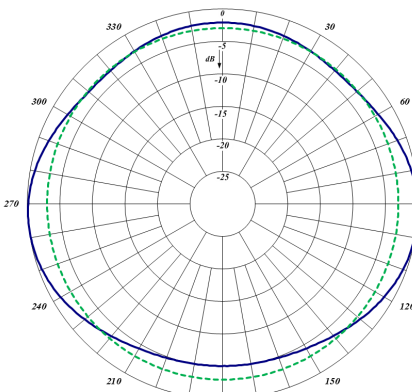


862F-70 at 160 MHz Horizontal Pattern



Vertical Pattern

862F-70 at 220 MHz Horizontal Pattern



Vertical Pattern

770 Series UHF Exposed Dipoles

The 770 Series UHF Exposed Dipoles are available in 1, 2, 4, 8 and dual dipole configurations. All of our antennas can be completely customized to your particular applications. Our antennas can be black anodized. Adjustable or fixed, side mount or top mount, and heavy-duty versions are available.



- Each antenna is offered in a 1/4, 3/8, or 1/2 wave version.
- The 77X-70 has an internal cabling and fixed dipole-mast spacing.
- Heavy-duty versions are available. Please contact a Comprod Inc. Technical support technician for consultation.

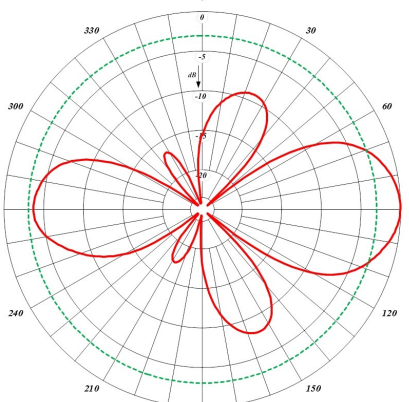
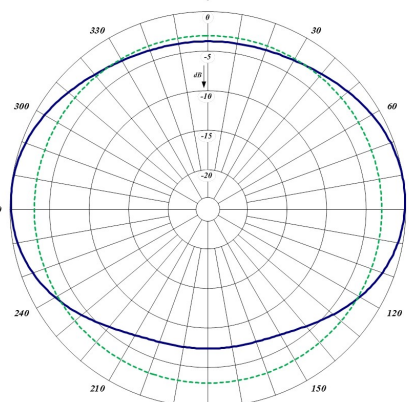
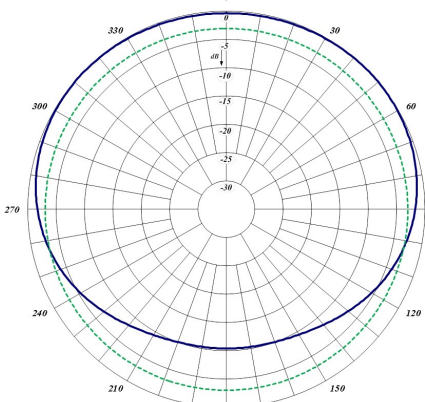
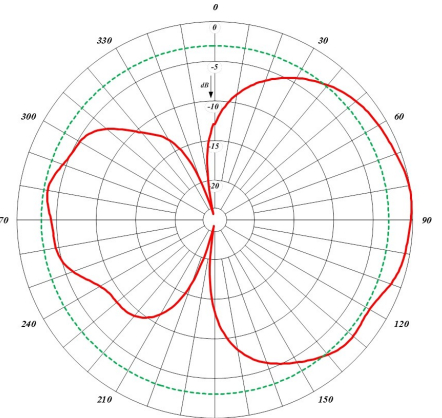
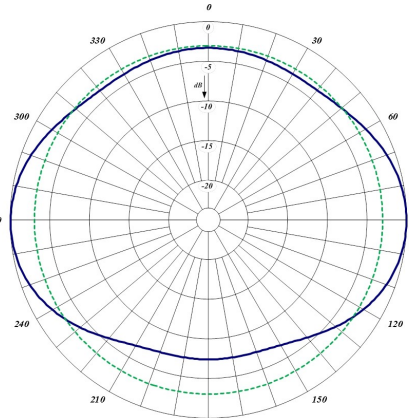
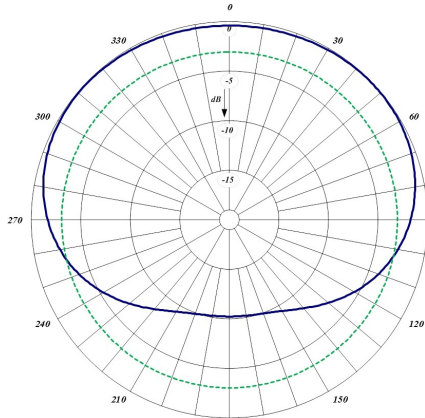
Electrical Specifications	771-70	772-70	774-70	778-70
Frequency Range, MHz	406-512	406-512	406-512	406-512
Nominal Gain, dBd	2.0-2.5	5.0-5.5	8.0-8.5	11.0-11.5
Number of Dipoles	1	2	4	8
Bandwidth 1.5:1 VSWR, MHz	106	106	106	64
Polarization	Vertical	Vertical	Vertical	Vertical
Pattern	Offset	Offset	Offset	Offset
Power Rating, Watts	75	150	300	300
Nominal Impedance, Ohms	50	50	50	50
Lightning Protection	DC Ground	DC Ground	DC Ground	DC Ground
Standard Termination	Type N Male	Type N Male	Type N Male	Type N Male

Mechanical Specifications	771-70	772-70	774-70	778-70
Length, in (mm)	66 (1676)	86 (2184)	126 (3200)	210 (5334)
Width, in (mm)	16 (406)	16 (406)	16 (406)	17 (432)
Weight, lbs (kg)	8.6 (3.9)	12.6 (5.7)	21 (9.5)	52 (23.6)
Rated Wind Velocity, no ice, mph (km/h)	170 (274)	160 (257)	150 (241)	140 (225)
Rated Wind Velocity, 0.5" (13 mm) ice, mph (km/h)	145 (233)	135 (217)	120 (193)	105 (169)
Lateral Thrust @ 100 mph, wind, lbs (kg)	27 (12.3)	39 (17.8)	64 (29)	134 (61)
Bending Moment @ top clamp: 100 mph, ft*lb (kg*m)	33.5 (4.6)	72 910)	177 (24.5)	655 (91)
Projected Area, ft ² (m ²)	1 (0.09)	1.5 (0.14)	2.4 (0.23)	5.1 (0.472)

Order Information	Side Mount	Top Mount	Heavy-Duty	Welded	Black Anodized
771-70	771-70SM	771-70TM	771-70HD	771-70HDW	771-70HDB
772-70	772-70SM	772-70TM	772-70HD	772-70HDW	772-70HDB
774-70	774-70SM	774-70TM	774-70HD	774-70HDW	774-70HDB
778-70	778-70SM	778-70TM	778-70HD	778-70HDW	778-70HDB



771-70



772-70

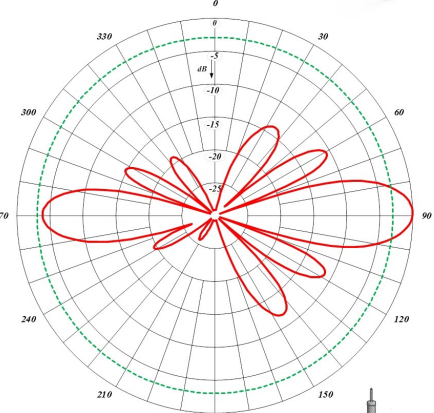
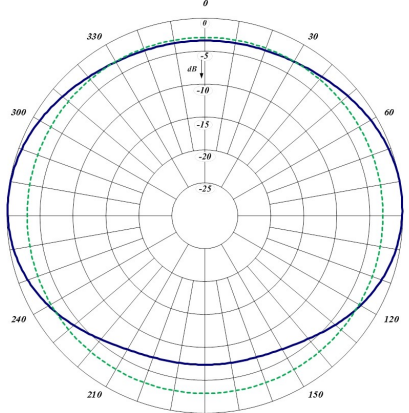
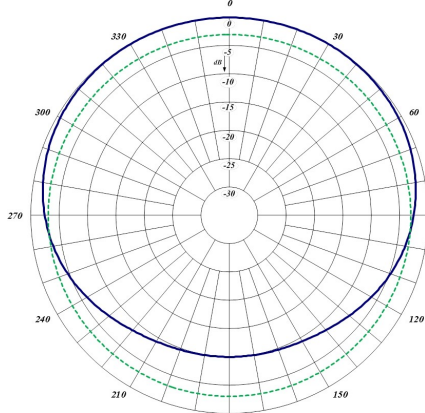
Quarterwave Spacing Horizontal

Halfwave Spacing Horizontal

Halfwave Spacing Vertical



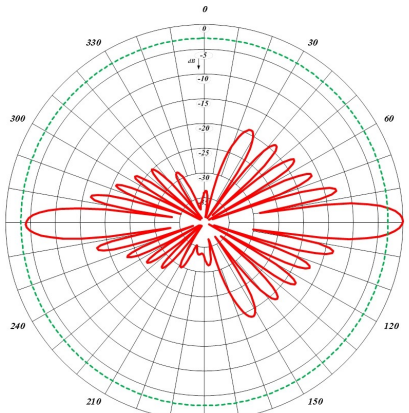
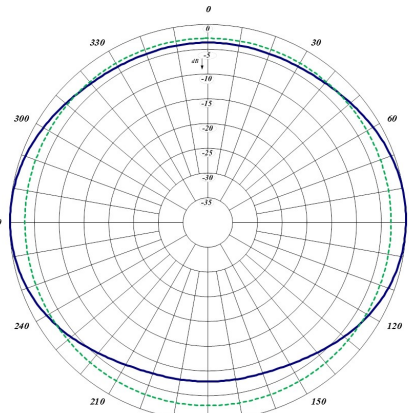
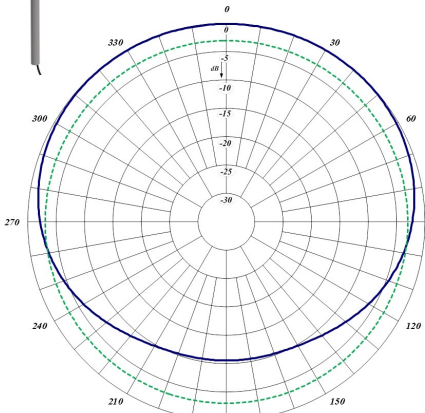
774-70



Quarterwave Spacing Horizontal

Halfwave Spacing Horizontal

Halfwave Spacing Vertical



778-70

Quarterwave Spacing Horizontal

Halfwave Spacing Horizontal

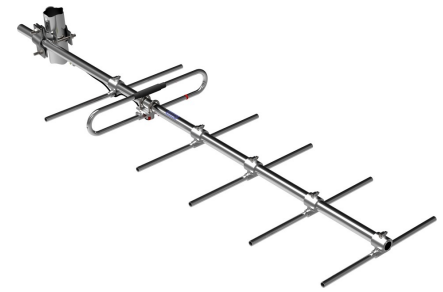
Halfwave Spacing Vertical



290 Series VHF or 220 MHz Yagi Antennas

The 290 Series VHF or MHz Yagi Antennas are available in 2, 3, and 6 element configurations. All of our antennas can be completely customized to your particular applications. Our antennas can be black anodized, welded, vertically or horizontally polarized, and heavy-duty versions are available.

- Each antenna has a rugged design to withstand harsh environmental conditions.
- The mounting hardware supplied will permit either vertical or horizontal polarization.
- Have the entire antenna welded for added durability as an option.
- Heavy-duty versions available. Contact Comprod Inc. Technical support for details.



290-70-220

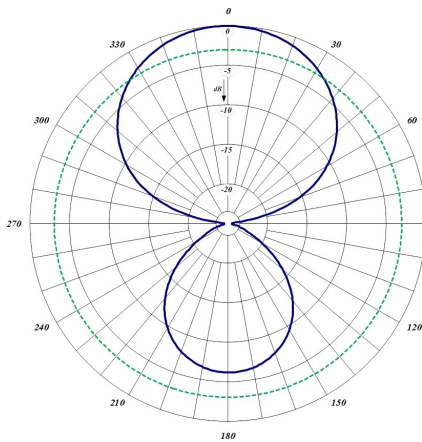
Electrical Specifications	291-70	295-70	290-70	291-70-220	295-70-220	290-70-220
Frequency Range, MHz	138-174	138-174	138-174	215-225	215-225	215-225
Nominal Gain, dBd	3.5	6.5	9.5	3.5	6.5	9.5
Number of Elements	2	3	6	2	3	6
Bandwidth 1.5:1 VSWR, MHz (Center Freq.%)	3.75	4	4	10	10	10
Polarization	V or H	V or H	V or H	V or H	V or H	V or H
Horizontal Beamwidth (Vert. Pol.)	140°	90°	62°	140°	90°	62°
Vertical Beamwidth (Vert. Pol.)	70°	61°	50°	70°	36°	50°
Front to Back, dBd	15	12	17	15	12	17
Pattern	Directional	Directional	Directional	Directional	Directional	Directional
Power Rating, Watts	350	350	350	350	350	350
Nominal Impedance, Ohms	50	50	50	50	50	50
Lightning Protection	DC Ground	DC Ground	DC Ground	DC Ground	DC Ground	DC Ground
Standard Termination	Type N Male	Type N Male	Type N Male	Type N Male	Type N Male	Type N Male

Mechanical Specifications	291-70	295-70	290-70	291-70-220	295-70-220	290-70-220
Length, in (mm)	50 (1270)	60 (1524)	108 (2743)	32 (813)	48 (1219)	84 (2134)
Width (1/2 Wave Spacing), in (mm)	40 (1016)	43 (1092)	42 (1067)	29 (737)	28 (711)	27 (686)
Weight, lbs (kg)	4.8 (2.2)	6.5 (2.9)	12.0 (5.4)	3.7 (1.7)	4.8 (2.2)	9.0 (4.1)
Rated Wind Velocity, no ice, mph (km/h)	150 (241)	145 (223)	120 (177)	165 (266)	155 (249)	145 (233)
Rated Wind Velocity, 0.5" (13mm) ice, mph (km/h)	105 (169)	100 (161)	85 (137)	145 (233)	130 (209)	100 (161)
Lateral Thrust @ 100 mph, wind, lbs (kg)	105 (169)	100 (161)	85 (137)	19.4 (8.8)	27 (12)	47 (21.3)
Torsional Moment @ 100 mph, ft*lb (kg*m)				25 (3.5)	52 (7.2)	138 (19)
Projected Area, ft ² (m ²)	1.1 (0.10)	1.4 (0.13)	2.4 (0.22)	0.7 (0.07)	1.0 (0.09)	1.75 (0.16)
Mounting Information, Clamp	181-85	181-85	115-85	181-85	181-85	115R-85

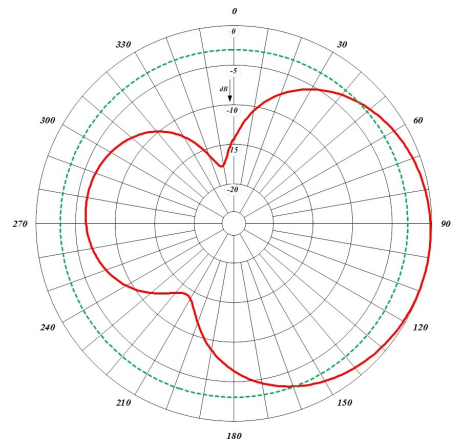
VHF				220 MHz			
End Mount	Welded	Heavy-Duty	Black Anodized	End Boom	Welded	Heavy-Duty	Black Anodized
291-70	291-70W	291-70HD	291-70B	291-70EB-220	291-70W-220	291-70HD-220	291-70HDB-220
295-70	295-70W	295-70HD	295-70B	295-70EB-220	295-70W-220	295-70HD-220	295-70HDB-220
290-70	290-70W	290-70HD	290-70B	290-70EB-220	290-70W-220	290-70HD-220	290-70HDB-220



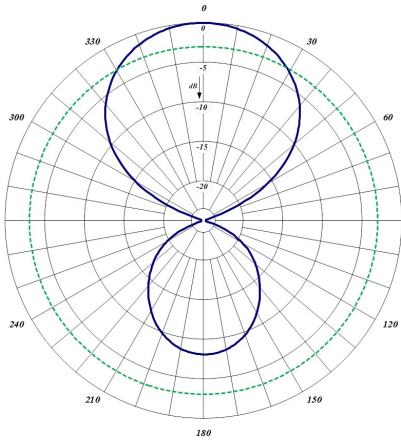
291-70-220



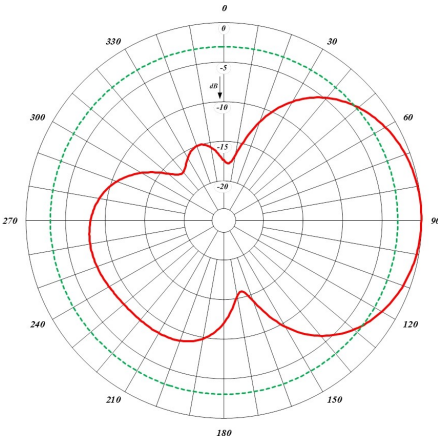
Horizontal Pattern



Vertical Pattern



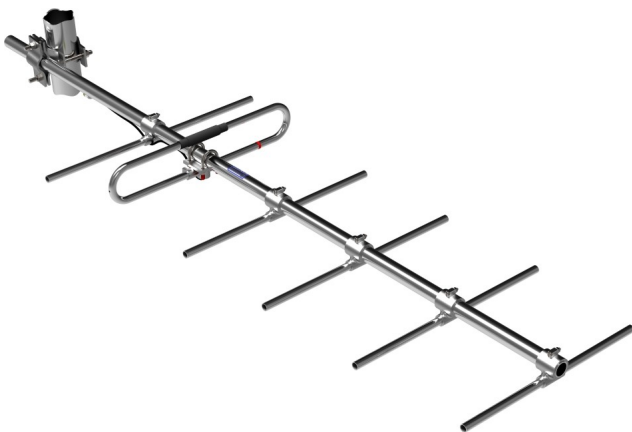
Horizontal Pattern



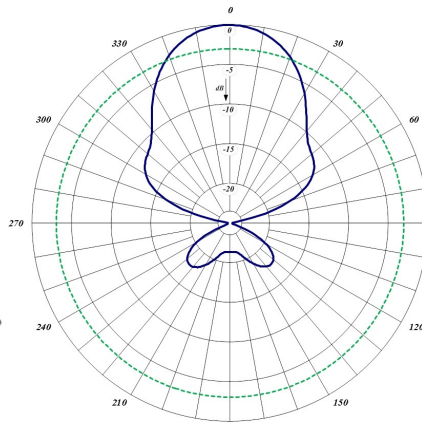
Vertical Pattern



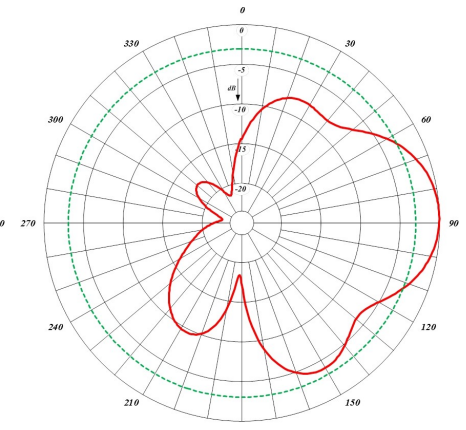
295-70-220



290-70-220



Horizontal Pattern

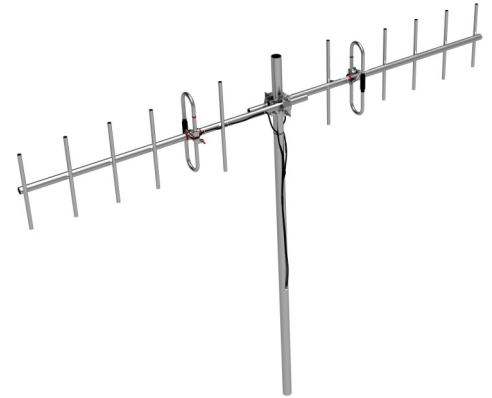


Vertical Pattern

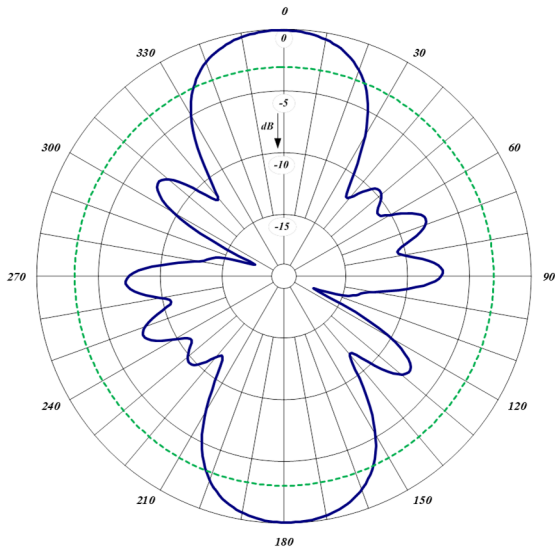
F-33324 Back to Back Dual Yagi Antenna Array

The F-33324 is a dual Yagi array mounted in a back to back configuration. The antennas are welded and are supplied with phasing harness. All of our antennas can be completely customized to your particular applications. Our antennas can be vertically or horizontally polarized.

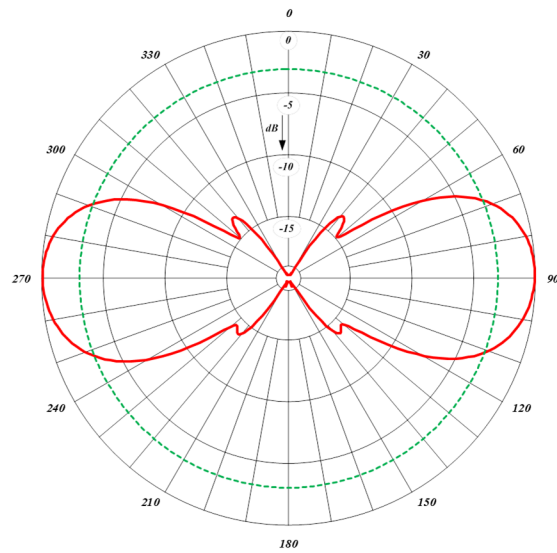
- Each antenna has a rugged design to withstand harsh environmental conditions.
- The mounting hardware supplied will permit either vertical or horizontal polarization.
- DC ground for lightning protection
- Heavy-duty versions are available. Please contact a Comprod Inc. Technical support technician for consultation.



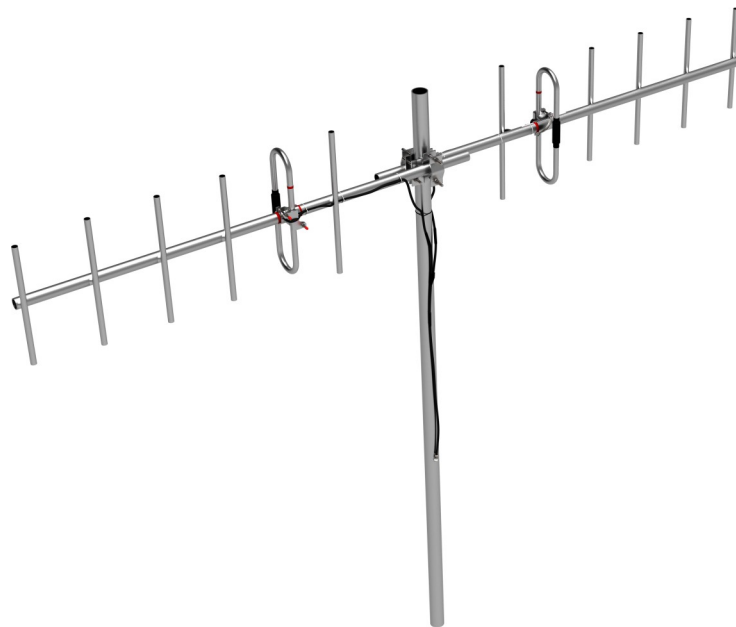
Electrical Specifications	
Frequency Range, MHz	215-225
Nominal Gain, dBd	6.6
Bandwidth 1.5:1 VSWR, MHz (Center Freq.%)	10
Polarization	Vert. or Horiz.
Horizontal Beamwidth (Vert. Pol.)	47°
Vertical Beamwidth (Vert. Pol.)	43°
Front to Back, dBd	N/A
Pattern	Directional
Power Rating, Watts	350
Nominal Impedance, Ohms	50
Lightning Protection	DC Ground
Standard Termination	Type N Male
Mechanical Specifications	
Length, in (mm)	161 (4089)
Width, in (mm)	27 (686)
Weight, lbs (kg)	28 (12,7)
Rated Wind Velocity, no ice, mph (km/h)	145 (233)
Rated Wind Velocity, 0.5" no ice, mph (km/h)	100 (161)
Lateral Thrust @ 100 mph, wind, lbs (kg)	94 (418)
Projected Area, ft ² (m ²)	4.0 (0.37)
Mounting Information Mast O.D.	115R-85 Clamp



Horizontal Pattern



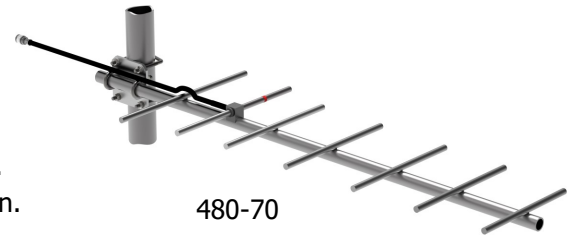
Vertical Pattern



UHF Yagi Antennas Series

The UHF Yagi Antenna Series is available in 2, 3, 7 elements and our 70 MHz wideband configurations. All of our antennas can be completely customized to your particular applications. Our antennas can be black anodized, fully welded, vertically or horizontally polarized, and heavy-duty versions are available.

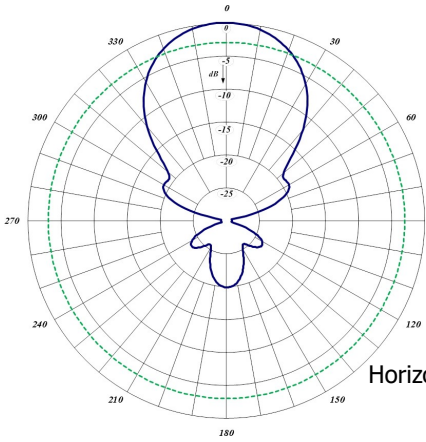
- Each antenna has a rugged, fully welded design to withstand harsh conditions.
- The mounting hardware supplied allows either vertical or horizontal polarization.
- DC ground for lightning protection
- All UHF Yagi antennas are fully welded.



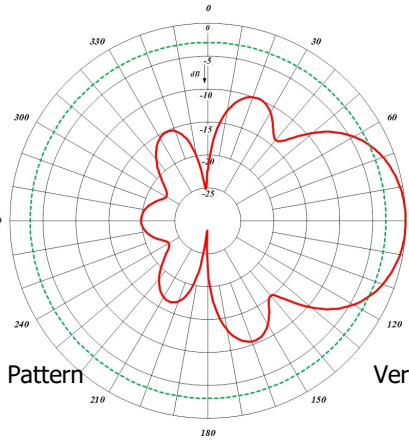
Electrical Specifications	F-3872	433-70	430-70	480-70
Frequency Range, MHz	406-512	406-512	406-512	406-470
Nominal Gain, dBd	3.5	6.5	10.0	10.0
Number of Elements	2	3	7	7
Bandwidth 1.5:1 VSWR, MHz (Center Freq.%)	24	24	24	64
Polarization	Vert. or Horiz.	Vert. or Horiz.	Vert. or Horiz.	Vert. or Horiz.
Horizontal Beamwidth (Vert. Pol.)	138°	83°	62°	62°
Vertical Beamwidth (Vert. Pol.)	72°	59°	48°	50°
Front to Back, dBd	10	12	20	17
Pattern	Directional	Directional	Directional	Directional
Power Rating, Watts	350	350	350	350
Nominal Impedance, Ohms	50	50	50	50
Lightning Protection	DC Ground	DC Ground	DC Ground	DC Ground
Standard Termination	Type N Male	Type N Male	Type N Male	Type N Male

Mechanical Specifications	F-3872	433-70	430-70	480-70
Length, in (mm)	28 (711)	23 (584)	45 (1143)	45 (1143)
Width (1/2 Wave Spacing), in (mm)	14.5 (368)	14 (355)	14.5 (368)	14.4 (366)
Weight, lbs (kg)	2.8 (1.3)	2.9 (1.3)	3.9 (1.8)	3.9 (1.8)
Rated Wind Velocity, no ice, mph (km/h)	160 (257)	160 (257)	150 (241)	150 (241)
Rated Wind Velocity, 0.5" (13 mm) ice, mph (km/h)	120 (193)	120 (193)	110 (177)	110 (177)
Lateral Thrust @ 100 mph, wind, lbs (kg)	9 (4.1)	8.7 (4.0)	16 (7.3)	15 (6.8)
Projected Area, ft ² (m ²)	0.34 (0.03)	0.32 (0.03)	0.61 (0.06)	0.55 (0.05)
Mounting Information Mast O.D.	127-85 Clamp	127-85 Clamp	127-85 Clamp	127-85 Clamp

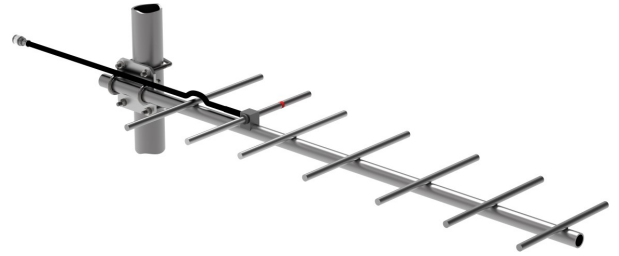
Order Information	406-430	430-450	450-470	406-470	Black	(2) Stacked	(4) Stacked
F-3872	F-3872*1	F-3872*2	F-3872*3	N/A	F-3872B	N/A	N/A
433-70	433-70*1	433-70*2	433-70*3	N/A	433-70B	N/A	N/A
430-70	430-70*1	430-70*2	430-70*3	N/A	430-70B	431-70	432-70
480-70	480-70	480-70	480-70	480-70	480-70B	481-70	482-70



Horizontal Pattern



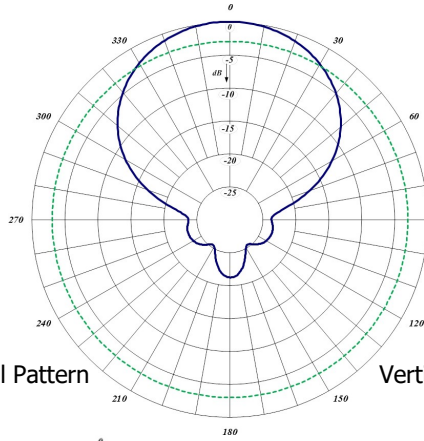
Vertical Pattern



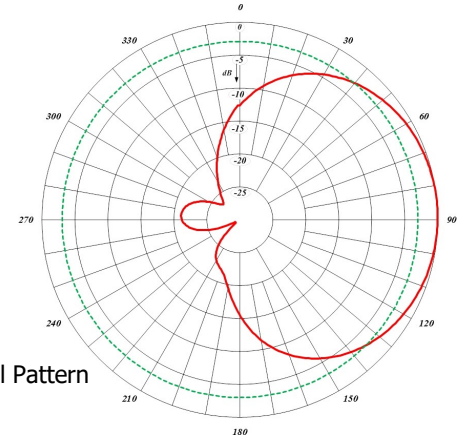
480-70



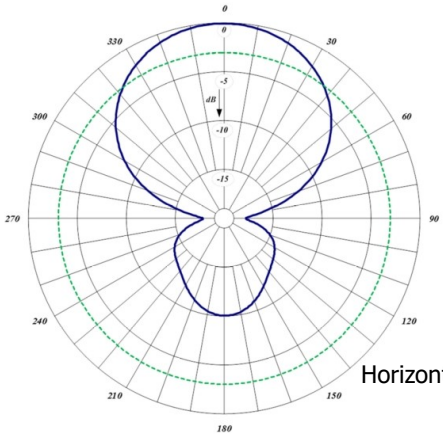
433-70



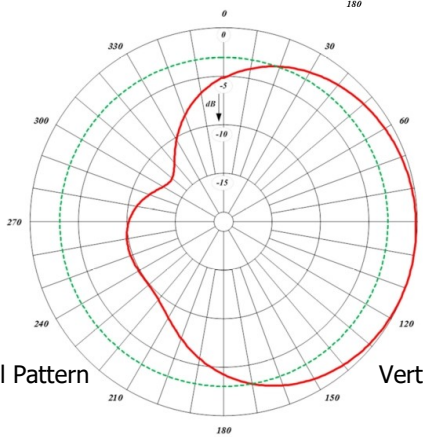
Horizontal Pattern



Vertical Pattern



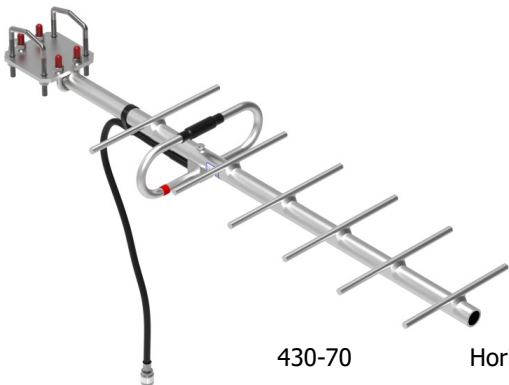
Horizontal Pattern



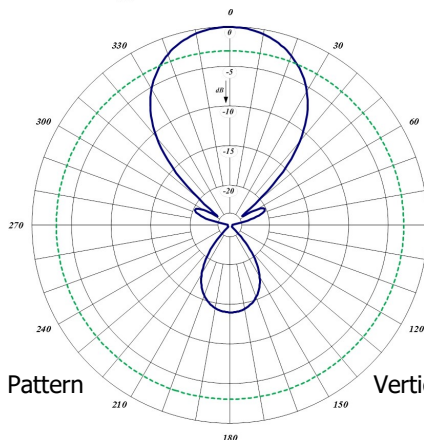
Vertical Pattern



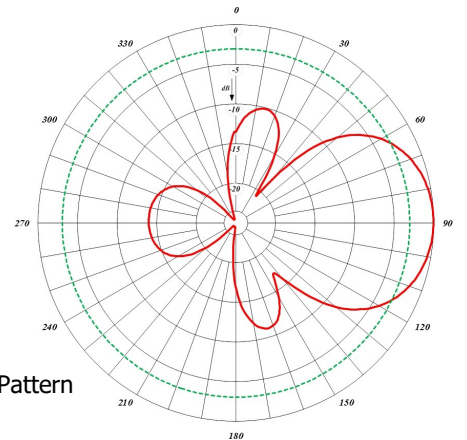
F-3872



430-70



Horizontal Pattern

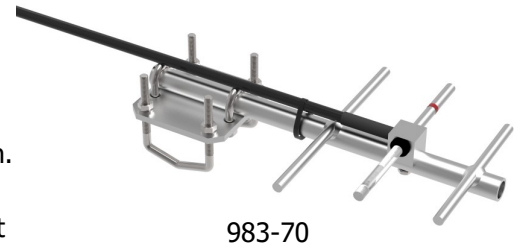


Vertical Pattern

980 Yagi Antennas Series

The 980 Yagi Antenna Series are available in 2, 3, 7, 11 element configurations. All of our antennas can be completely customized to your particular applications. Our antennas can be black anodized, vertically or horizontally polarized.

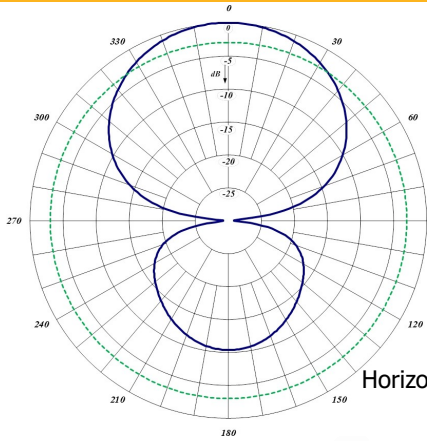
- Each antenna has a rugged design to withstand harsh environmental conditions.
- The mounting hardware supplied will permit either vertical or horizontal polarization.
- All 980 Series Yagi antennas are fully welded.
- Heavy-duty versions are available. Please contact a Comprod Inc. Technical support technician for consultation.



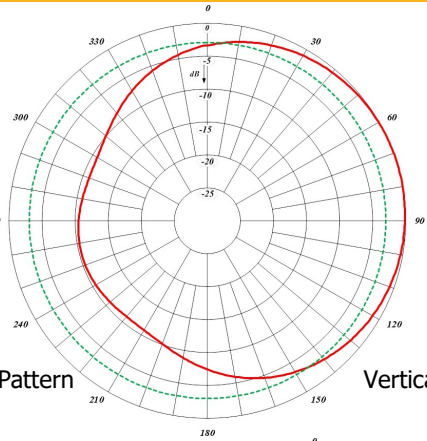
Electrical Specifications	982-70	983-70	980-70	987-70
Frequency Range, MHz	900-930	746-960	746-960	746-960
Nominal Gain, dBd	3.5	6.5	10.0	12.0
Number of Elements	2	3	7	12
Bandwidth 1.5:1 VSWR, MHz (Ctr. Freq.%)	30	85	85	85
Polarization	Vert. or Horiz.	Vert. or Horiz.	Vert. or Horiz.	Vert. or Horiz.
Horizontal Beamwidth (Vert. Pol.)	128°	99°	56°	41°
Vertical Beamwidth (Vert. Pol.)	66°	60°	42°	38°
Front to Back, dBd	9	16	20	20
Pattern	Directional	Directional	Directional	Directional
Power Rating, Watts	200	200	200	200
Nominal Impedance, Ohms	50	50	50	50
Standard Termination	Type N Male	Type N Male	Type N Male	Type N Male

Mechanical Specifications	982-70	983-70	980-70	987-70
Length, in (mm)	11 (280)	13 (330)	27 (686)	41 (1041)
Width (1/2 Wave Spacing), in (mm)	6.5 (165)	8 (203)	8 (203)	8 (203)
Weight, lbs (kg)	1.7 (0.76)	1.8 (0.82)	2.5 (1.1)	3 (1.4)
Rated Wind Velocity, no ice, mph (km/h)	160 (257)	160 (257)	150 (241)	140 (225)
Rated Wind Velocity, 0.5" (13 mm) ice, mph (km/h)	120 (193)	120 (193)	110 (177)	100 (161)
Lateral Thrust @ 100 mph, wind, lbs (kg)	2.6 (1.2)	2.8 (1.3)	7 (3.2)	11 (5.0)
Projected Area, ft ² (m ²)	0.10 (0.009)	0.13 (0.012)	0.26 (0.024)	0.41 (0.038)
Mounting Hardware	1.0-2.38" O.D.	1.0-2.38" O.D.	1.0-2.38" O.D.	1.0-2.38" O.D.

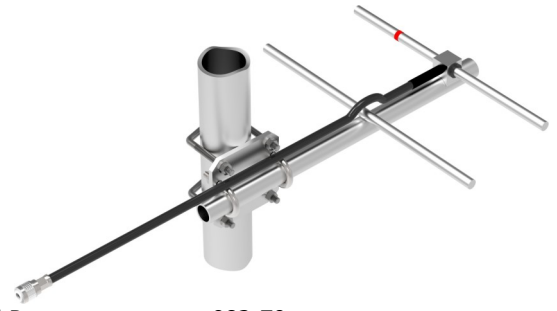
Order Information	746-806 MHz	806-869 MHz	824-896 MHz	896-960 MHz	Black	(2) Stacked
982-70	**** Call With Frequencies ***					N/A
983-70	983-70*1	983-70*2	983-70*3	983-70*4	983-70B	N/A
980-70	980-70*1	980-70*2	980-70*3	980-70*4	980-70B	(2) 980-70
987-70	987-70*1	987-70*2	987-70*3	987-70*4	987-70B	(2) 987-70



Horizontal Pattern



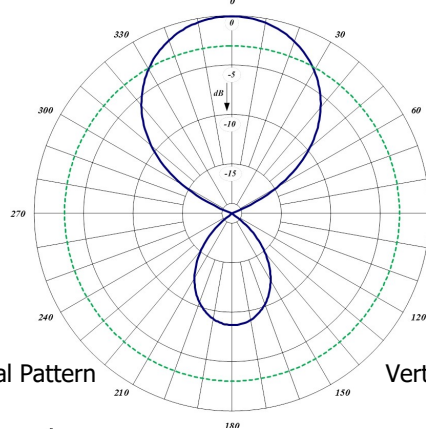
Vertical Pattern



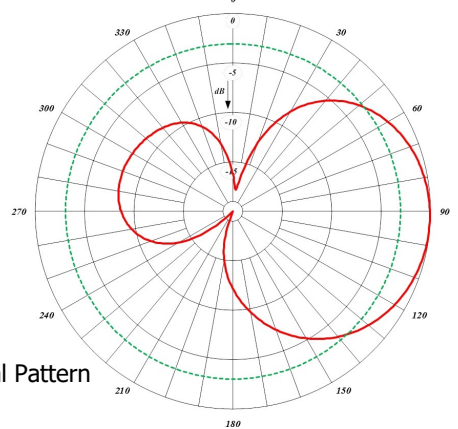
982-70



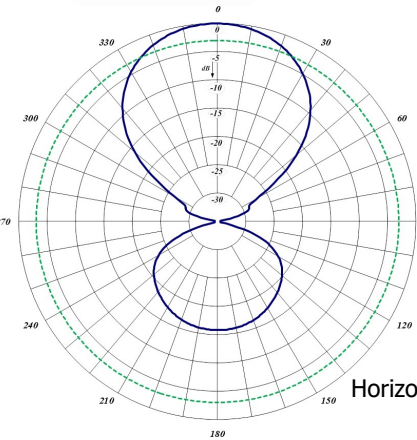
983-70



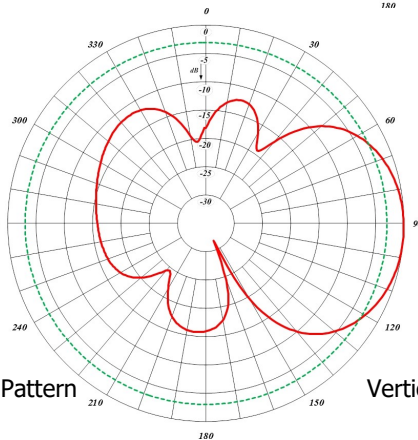
Horizontal Pattern



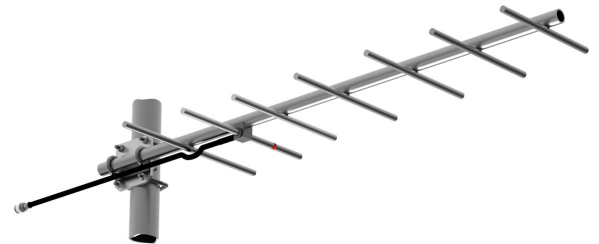
Vertical Pattern



Horizontal Pattern



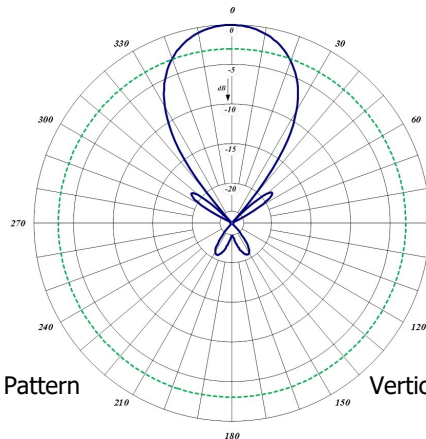
Vertical Pattern



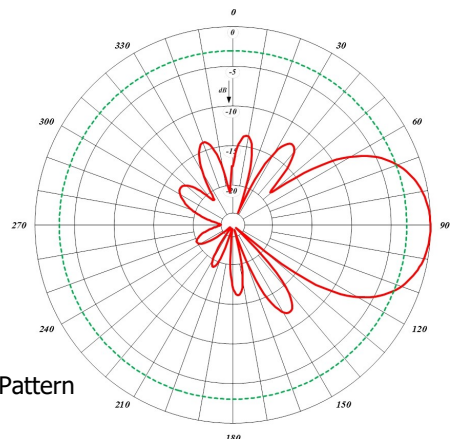
980-70



987-70



Horizontal Pattern

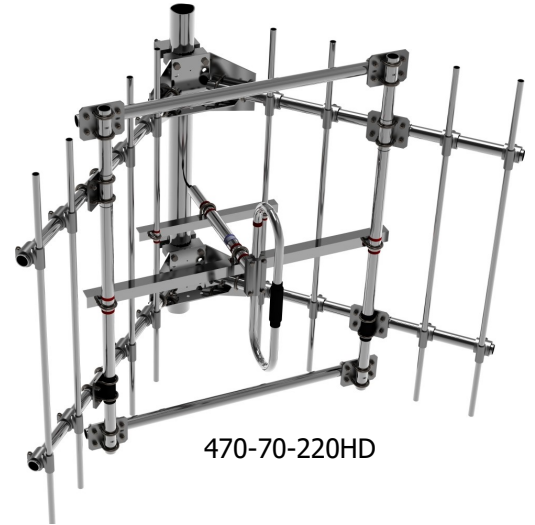


Vertical Pattern

220 MHz Corner Reflector Antenna Series

The Corner Reflector Antennas are available in VHF, UHF, 700/800/900 MHz configurations. These antennas have an extremely good front-to-back ratio. They are broadband and are ideal for point-to-point applications. Performance is constant throughout the band.

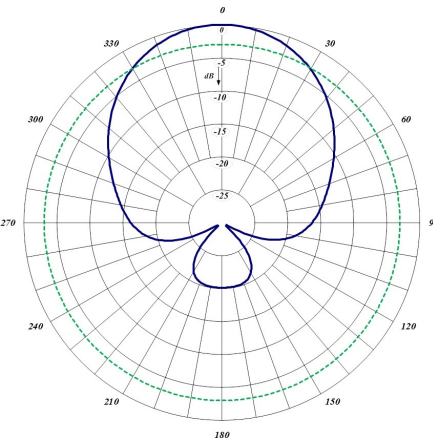
- Each antenna has a rugged design to withstand harsh environmental conditions.
- Single or dual dipole mounted in the front of a 90° reflector, providing good directivity and a very high front-to-back ratio
- The 365-70 and 965-70 are highly directive parabolic antennas consisting of a back-firing dipole reflector assembly for increased gain and directivity.
- These antennas have ultra-low VSWR ratings, and will not exceed 2.0:1 VSWR ratio with 0.5" (13 mm) of radial ice.
- The supplied mounting hardware allows either vertical or horizontal polarization.
- DC ground for lightning protection
- Heavy-duty versions are available, contact Comprod Inc. Technical support.



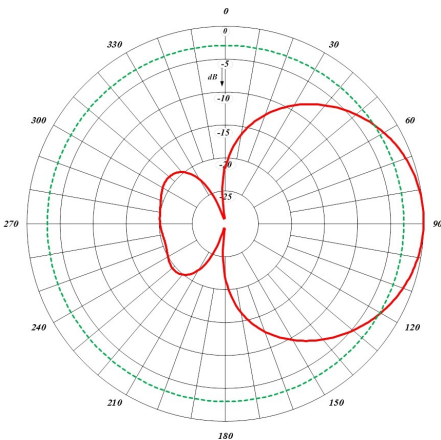
470-70-220HD

Electrical Specifications	470-70-220	470-70-220HD	471-70-220
Frequency Range, MHz	215-225	215-225	215-225
Nominal Gain, dBd	7.0	7.0	10.0
Bandwidth: 1.5:1 VSWR, MHz	10	10	10
Polarization	Vert. or Horiz.	Vert. or Horiz.	Vert. or Horiz.
Horizontal Beamwidth (Vert. Pol.)	67°	67°	50°
Vertical Beamwidth (Vert. Pol.)	75°	75°	66°
Front to Back, dBd	30	30	30
Pattern	Directional	Directional	Directional
Power Rating, Watts	250	250	250
Nominal Impedance, Ohms	50	50	50
Lightning Protection	DC Ground	DC Ground	DC Ground
Standard Termination	Type N Male	Type N Male	Type N Male

Electrical Specifications	470-70-220	470-70-220HD	471-70-220
Length, in (mm)	48 (1219)	48 (1219)	72 (1829)
Width, in (mm)	75 (1905)	75 (1905)	120 (3048)
Weight, lbs (kg)	39 (17.7)	57 (25.8)	55 (30)
Rated Wind Velocity, no ice, mph (km/h)	100 (161)	140 (225)	100 (161)
Rated Wind Velocity, 0.5" (13 mm) ice, mph (km/h)	85 (137)	100 (161)	85 (137)
Lateral Thrust @ 100 mph, wind, lbs (kg)	144 (65)	236 (107)	320 (145)
Projected Area, ft ² (m ²)	5.3 (0.5)	8.8 (0.82)	11.9 (1.10)
Mounting Information: (clamp included) for pipe size O.D.	2.9 (73)	2.9 (73)	2.9 (73)



Horizontal Pattern

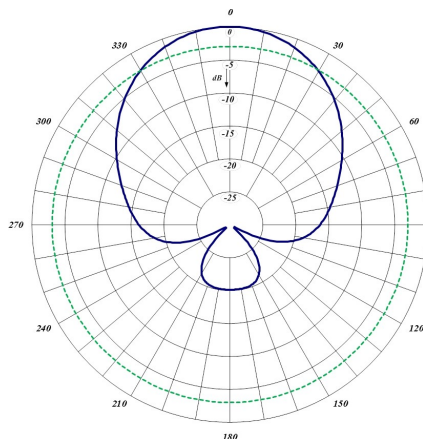


Vertical Pattern

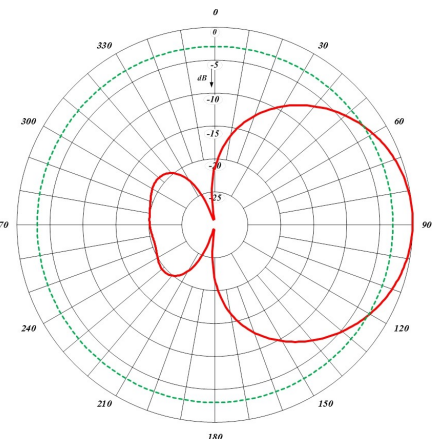
470-70-220



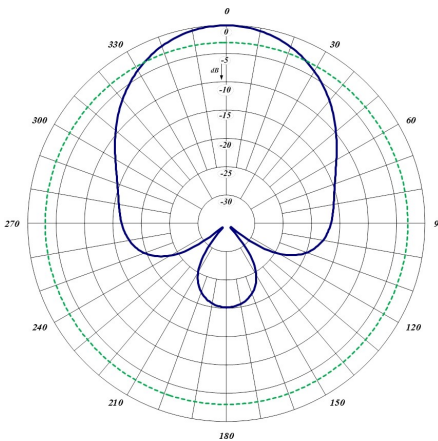
470-70-220HD



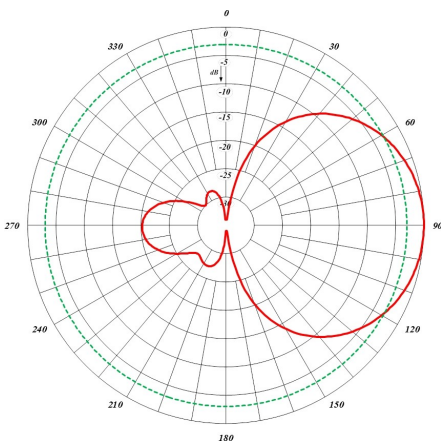
Horizontal Pattern



Vertical Pattern

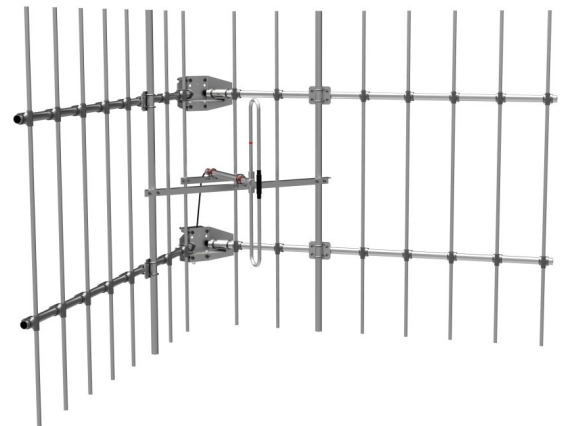


Horizontal Pattern



Vertical Pattern

471-70-220



490 Heavy Duty Yagi Antennas Series

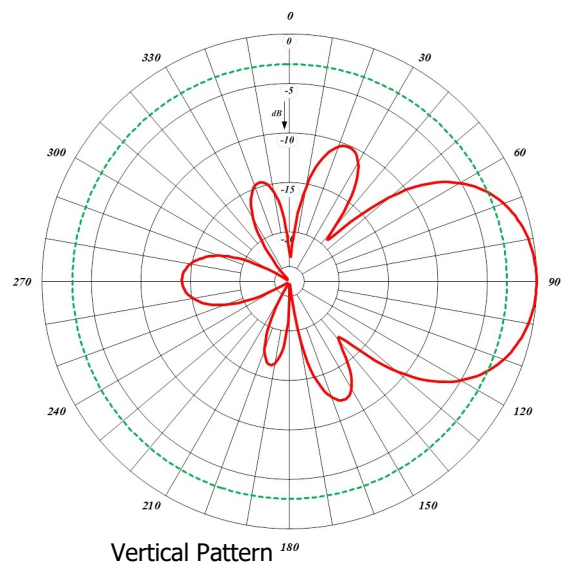
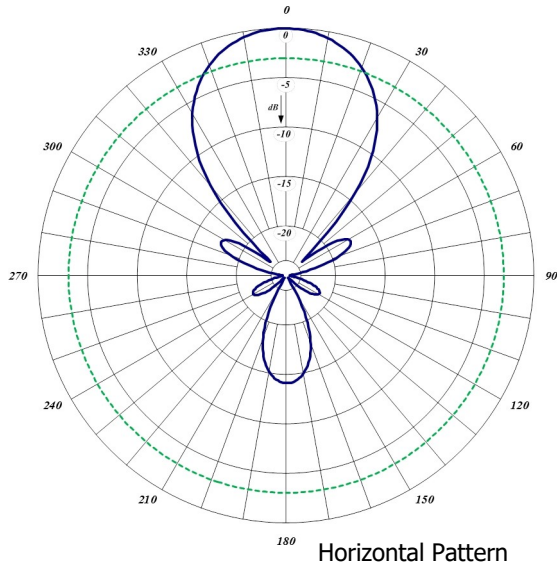
The 490 Heavy Duty Yagi Series is an extremely rugged, 7-element configuration antenna. All of our antennas can be completely customized to your particular applications. Our antennas can be black anodized, vertically or horizontally polarized.



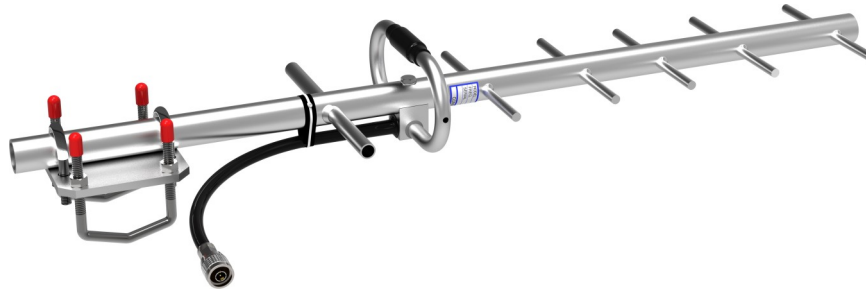
490-70

- Each antenna has an extremely rugged design to withstand harsh environmental conditions.
- The mounting hardware supplied will permit either vertical or horizontal polarization.
- The 490 Series Yagi antennas are fully welded.
- DC ground for lightning protection

Electrical Specifications		490-70			
Frequency Range, MHz		806-960			
Nominal Gain, dBd		10.0			
Number of Elements		7			
Bandwidth: 1.5:1 VSWR, MHz		85			
Polarization		Vert. or Horiz.			
Horizontal Beamwidth (Vert. Pol.)		56°			
Vertical Beamwidth (Vert. Pol.)		42°			
Front to Back, dBd		20			
Pattern		Directional			
Power Rating, Watts		200			
Nominal Impedance, Ohms		50			
Standard Termination		Type N Male			
Mechanical Specifications		490-70			
Length, in (mm)		27 (686)			
Width (1/2 Wave Spacing), in (mm)		8 (203)			
Weight, lbs (kg)		2.5 (1.1)			
Rated Wind Velocity, no ice, mph (km/h)		150 (241)			
Rated Wind Velocity, 0.5" (13 mm) ice, mph (km/h)		150 (241)			
Lateral Thrust @ 100 mph, wind, lbs (kg)		38 (17)			
Bending Moment @ top clamp: 100 mph, ft*lb (kg*m)		13 (1.8)			
Projected Area, ft ² (m ²)		0.4 (0.04)			
Mounting Hardware		1.0-2.38" O.D.			
Order Information	806-869 MHz	824-896 MHz	896-960 MHz	Black Anodized	(2) Stacked
490-70	490-70*1	490-70*2	490-70*3	490-70B	491-70



490-70



790 Series Enclosed Dipoles

The 790 Series Enclosed Dipoles are available in 2, 4, or 9 dipole configurations. All of our antennas can be completely customized to your particular applications.

- Each antenna is offered in an offset or bi-directional pattern.
- Broadband antennas are ideal for trunking or cellular applications.
- Weatherproof radome to ensure continuous service during severe environmental conditions
- Versions with 3, 6, and 9-degree downtilt are also available.

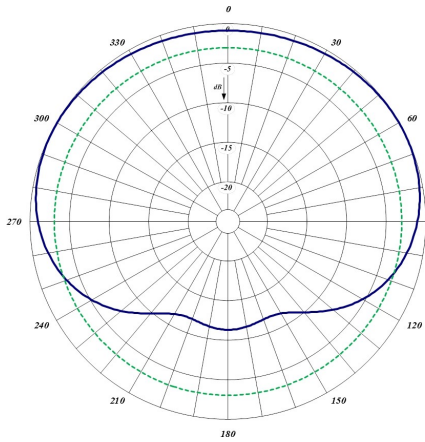
794-70



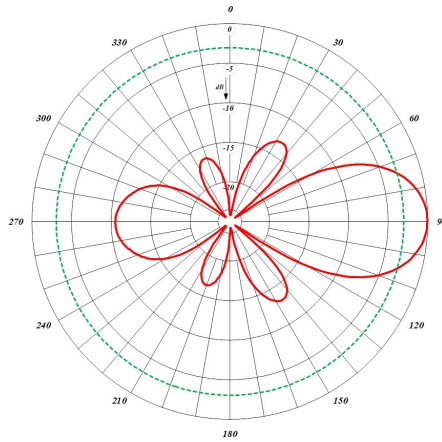
Electrical Specifications	792-70	794-70	799-70
Frequency Range, MHz	746-960	746-960	746-960
Nominal Gain, dBd	5.0	8.0	10.0
Number of Dipoles	2	4	9
Bandwidth 1.5:1 VSWR, MHz	90	90	90
Polarization	Vertical	Vertical	Vertical
Pattern	Offset or Bi-Dir.	Offset or Bi-Dir.	Offset or Bi-Dir.
Power Rating, Watts	150	300	500
Nominal Impedance, Ohms	50	50	50
Lightning Protection	DC Ground	DC Ground	DC Ground
Standard Termination	Type N Male	Type N Male	Type N Male
Mechanical Specifications	792-70	794-70	799-70
Length, in (mm)	22 (559)	44.5 (1130)	94 (2388)
Width (1/2 Wave Spacing), in (mm)	2.5 (64)	2.5 (64)	2.5 (64)
Weight, lbs (kg)	8.8 (4)	14 (6.5)	24 (11)
Rated Wind Velocity, no ice, mph (km/h)	100 (162)	100 (162)	100 (162)
Rated Wind Velocity, 0.5" (13 mm) ice, mph (km/h)	85 (137)	85 (137)	85 (137)
Lateral Thrust @ 100 mph, wind, lbs (kg)	36.4 (16.5)	73 (33)	153 (59)
Projected Area, ft ² (m ²)	1.4 (0.13)	2.7 (0.25)	5.7 (0.53)
Mounting Information (Clamps incl.)	1.5-2.88" O.D.	1.5-2.88" O.D.	1.5-2.88" O.D.
Order Information	746-896 MHz	806-960 MHz	
792-70	792-70*1	792-70*2	
794-70	794-70*1	794-70*2	
799-70	799-70*1	799-70*2	



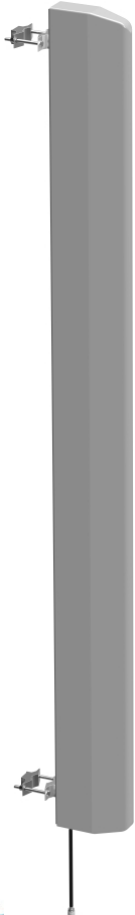
792-70



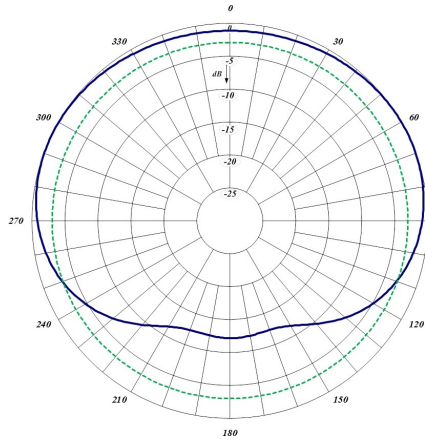
Horizontal Pattern



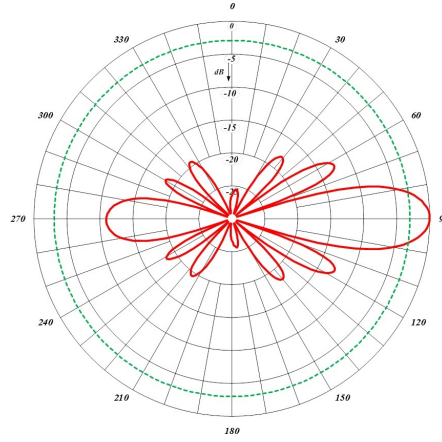
Vertical Pattern



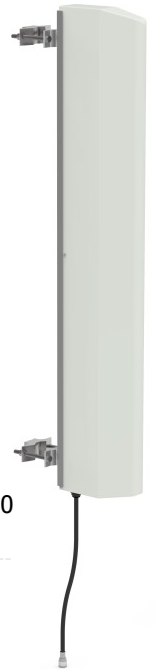
799-70



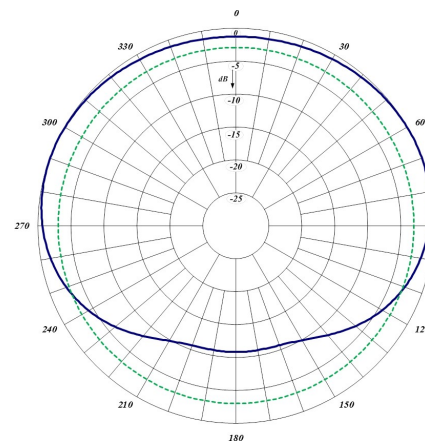
Horizontal Pattern



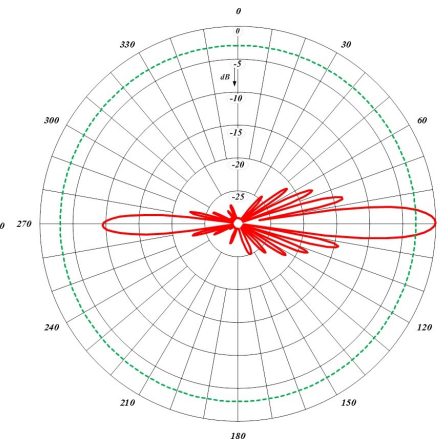
Vertical Pattern



794-70



Horizontal Pattern



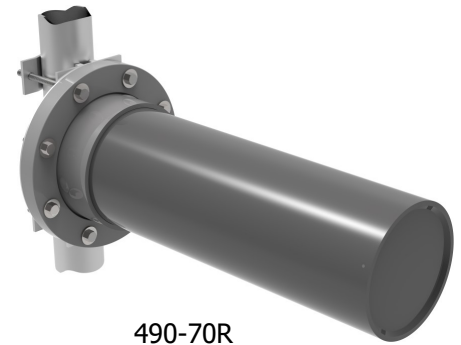
Vertical Pattern

RADOME YAGI ANTENNA

Radome Yagi Antennas Series

The Radome Yagi Antenna Series are available in UHF and 700/800/900 MHz configurations. The UHF model is offered with a fiberglass or PVC radome. The 700/800/900 MHz model is offered in PVC. All of our antennas can be completely customized to your particular applications.

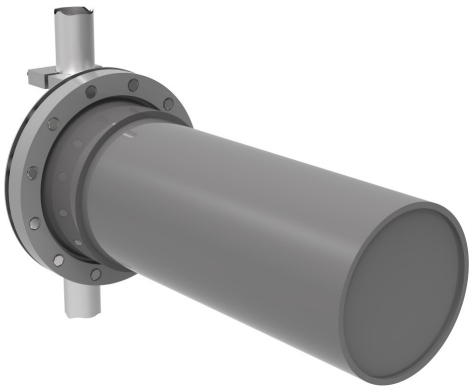
- Each antenna has a rugged design to withstand extreme environmental conditions.
- The mounting hardware supplied supports either vertical or horizontal polarization.
- DC ground for lightning protection



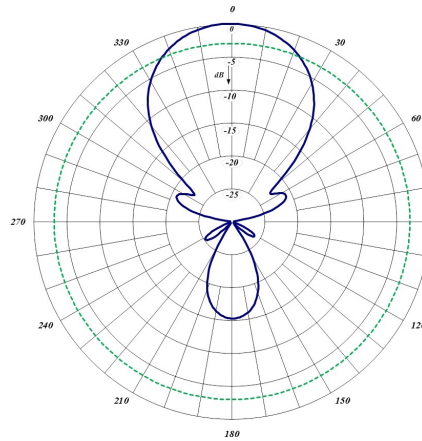
490-70R

Electrical Specifications	425-70	426-70	490-70R		
Frequency Range, MHz	406-512	406-512	746-960		
Nominal Gain, dBd	10	10	10		
Number of Elements	Loop Yagi	Loop Yagi	7		
Bandwidth: 1.5:1 VSWR, MHz	20	20	72		
Polarization	Vert. or Horiz.	Vert. or Horiz.	Vert. or Horiz.		
Horizontal Beamwidth (Vert. Pol.)	62°	62°	56°		
Vertical Beamwidth (Vert. Pol.)	48°	48°	42°		
Front to Back, dBd	20	20	20		
Pattern	Directional	Directional	Directional		
Power Rating, Watts	250	250	150		
Nominal Impedance, Ohms	50	50	50		
Lightning Protection	DC Ground	DC Ground	DC Ground		
Standard Termination	Type N Male	Type N Male	Type N Male		
Mechanical Specifications	425-70	426-70	490-70R		
Length, in (mm)	31 (787)	30 (762)	29 (737)		
Width (1/2 Wave Spacing), in (mm)	16 (406)	16 (406)	14 (356)		
Weight, lbs (kg)	44 (20)	19 (8.6)	28 (12)		
Radome Material	PVC	Fiberglass	PVC		
Rated Wind Velocity, no ice, mph (km/h)	150 (241)	120 (193)	150 (241)		
Rated Wind Velocity, 0.5" (13 mm) ice, mph (km/h)	105 (169)	110 (177)	115 (185)		
Lateral Thrust @ 100 mph, wind, lbs (kg)	69 (31.3)	61 (27.7)	47.4 (21.5)		
Projected Area, ft ² (m ²)	2.6 (0.24)	2.3 (0.21)	1.8 (0.17)		
Mounting Information	2.9" O.D.	2.4" O.D.	2.9" O.D.		
Order Information	(2) Stacked	(4) Stacked	406-430	430-450	450-470
425-70	2*425-70	4*425-70	425-70*1	425-70*2	425-70*3
426-70	2*426-70	4*426-70	426-70*1	426-70*2	426-70*3
490-70R	2*490-70R	4*490-70R	N/A	N/A	N/A

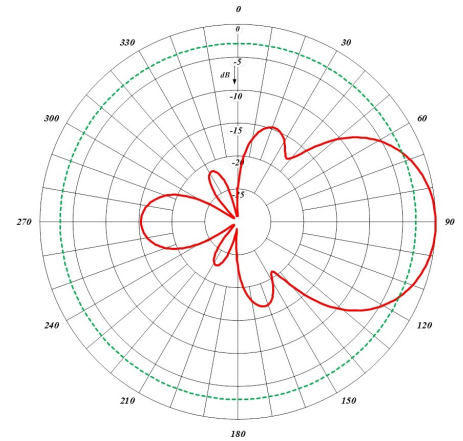
RADOME YAGI ANTENNA



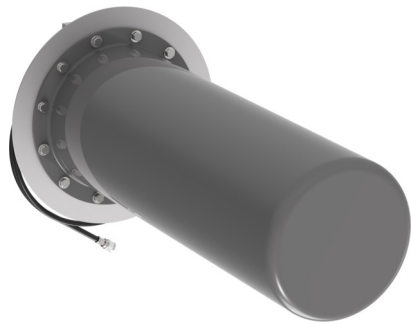
425-70



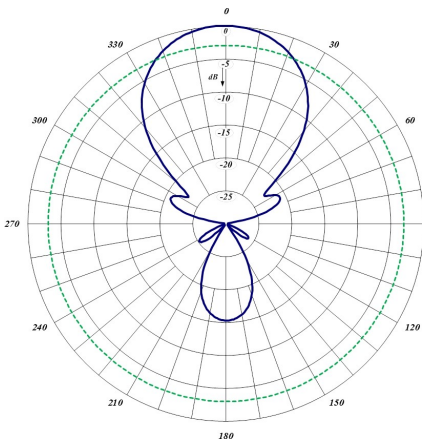
Horizontal Pattern



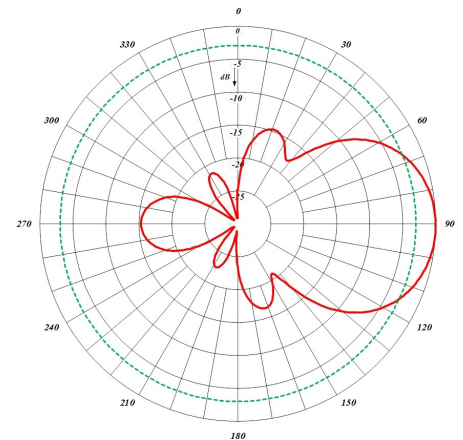
Vertical Pattern



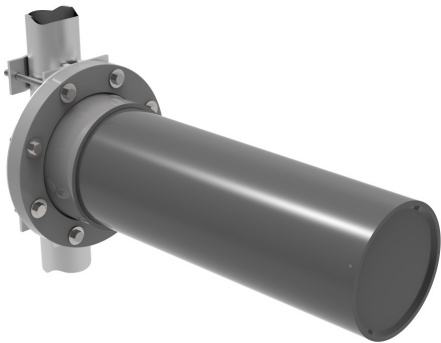
426-70



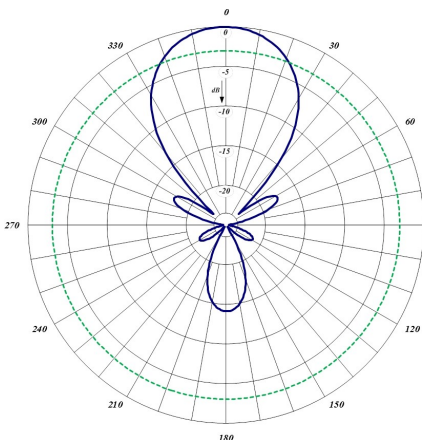
Horizontal Pattern



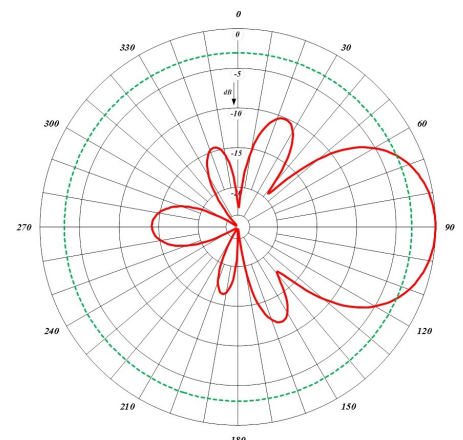
Vertical Pattern



490-70R



Horizontal Pattern



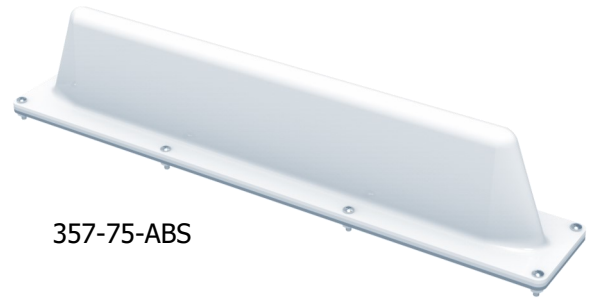
Vertical Pattern

Our line of VHF transit antennas is a low profile rugged alternative to a 1/4 wave whip mobile antenna. When mounted on a horizontal surface, maximum radiation is omnidirectional and vertically polarized.

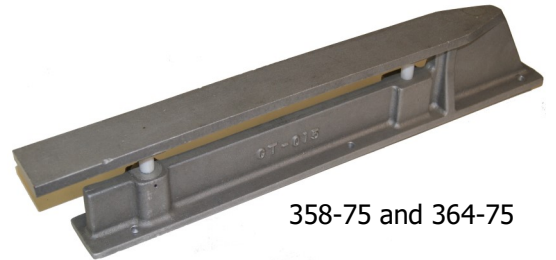
These antennas are an excellent choice for low clearance applications such as those found on trains, public transit vehicles, construction equipment and police vehicles.

The model 357-75-ABS is a folded 1/4 wavelength section of aluminum tube housed in an impact resistant ABS radome. To ensure a moisture proof installation, the model 357-75-ABS is supplied with a mounting gasket.

The 358-75 and 364-75 models are a high strength cast aluminum designs. The antennas can be coated for additional protection against harsh environmental conditions. To ensure a moisture proof installation, the 358-75 and 364-75 models are supplied with an O-ring.



357-75-ABS

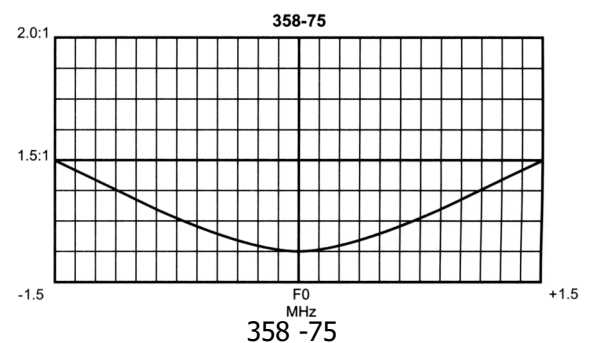
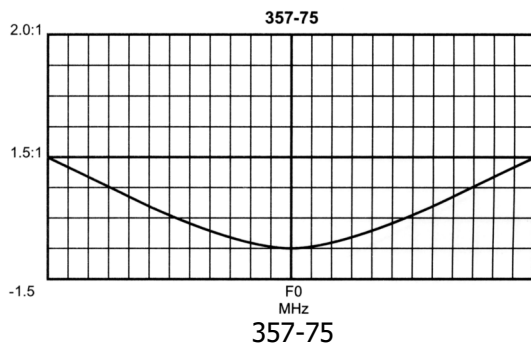


358-75 and 364-75

Electrical Specifications	357-75-ABS	358-75	364-75
Nominal Gain	Unity	Unity	Unity
Maximum Power, Watts	150	150	150
Frequency Range, MHz	148-174	138-174	215-225
Bandwidth VSWR: 1.5:1, MHz	3.0	3.0	10
Bandwidth VSWR: 2.0:1, MHz	4.5	4.5	N/A
Nominal Impedance, Ohms	50	50	50
Radiation Pattern	Omni	Omni	Omnidirectional
Polarization	Vertical	Vertical	Vertical
Radome Material	High Impact ABS	N/A	N/A
Connector	UHF / BNC / N Female	UHF / BNC / N Female	UHF Female
Height, in (mm)	4 (102)	4 (102)	4.25 (108)
Length, in (mm)	21 (533)	23-1/2 (597)	17 (432)
Width, in (mm)	3 (76)	2-1/8 (54)	2 (51)
Weight, lbs (kg)	2.1 (0.945)	6 (2.7)	5 (2.268)
Minimum Ground Plane Size, in (mm)	36 x 48 (914 x 1219)	36 x 48 (914 x 1219)	36 x 48 (914 x 1219)

Ordering information:

- Specify exact frequency
- Specify connector type, UHF, BNC or N Female

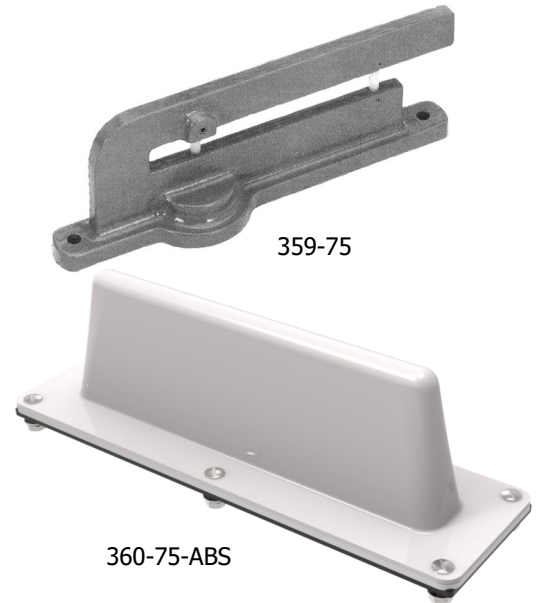


Our line of UHF transit antennas is a low profile rugged alternative to 1/4 wave whips. When mounted on a horizontal surface, maximum radiation is omnidirectional and vertically polarized.

These antennas are an excellent choice for low clearance applications such as those found on trains, public transit vehicles, construction equipment and police vehicles.

The model 359-75 is a high strength cast aluminum design. The antenna can be coated for additional protection against harsh environmental conditions. To ensure a moisture proof installation, the model 359-75 is supplied with an O-ring.

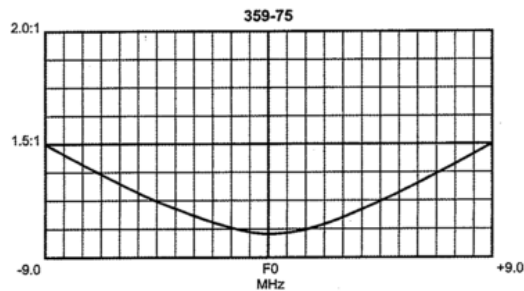
The model 360-75-ABS is a folded 1/4 wavelength section of aluminum tube housed in an impact resistant ABS radome. To ensure a moisture proof installation, the model 360-75-ABS is supplied with a mounting gasket.



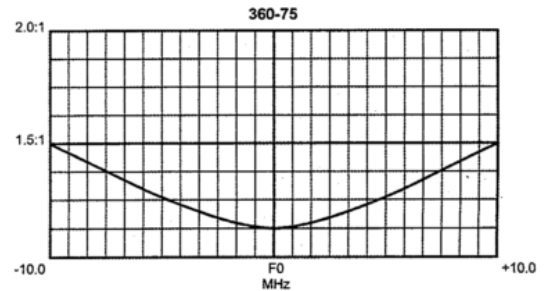
Electrical Specifications	359-75	360-75-ABS
Nominal Gain	Unity	Unity
Maximum Power, Watts	125	125
Frequency Range, MHz	406-512	406-512
Bandwidth VSWR: 1.5:1, MHz	18	20
Bandwidth VSWR: 2.0:1, MHz	27	40
Nominal Impedance, Ohms	50	50
Radiation Pattern	Omnidirectional	Omnidirectional
Polarization	Vertical	Vertical
Radome Material	N/A	High Impact ABS
Connector	UHF / BNC / N Female	UHF / BNC / N Female
Height, in (mm)	2-1/2 (64)	3 (76)
Length, in (mm)	8 (203)	11 (279)
Width, in (mm)	2 (51)	3-1/4 (83)
Weight, lbs (kg)	0.75 (0.338)	1 (0.45)
Minimum Ground Plane Size, in (mm)	20 x 16 (508 x 406)	20 x 16 (508 x 406)

Ordering information:

- Specify center frequency
- Specify connector type, UHF, BNC or N Female



359-75



360-75

Our line of radome transit antennas for operation in the 806-960 MHz band consists of compact, low profile antennas in weatherproof ABS radomes. When mounted on a horizontal surface, maximum radiation is omnidirectional and vertically polarized.

These antennas are an excellent choice for low clearance applications such as those found on trains, mass transit vehicles, construction equipment and police and emergency vehicles.

The 361-75-ABS model is a space diversity design that provides greater communication reliability in a poor environment. To ensure a moisture proof installation, the 361-75-ABS model is supplied with an O-ring.

The 362-75-ABS model is a standard, folded radiator housed in a sturdy high-impact ABS radome. To ensure a moisture proof installation, the 362-75-ABS model is supplied with a mounting gasket.

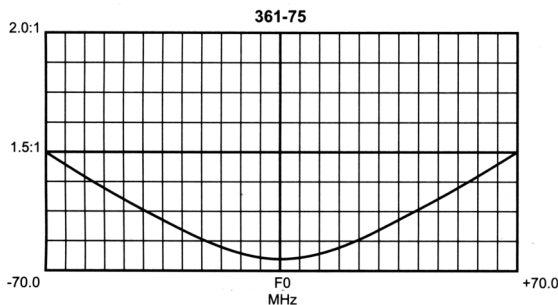


361-75-ABS

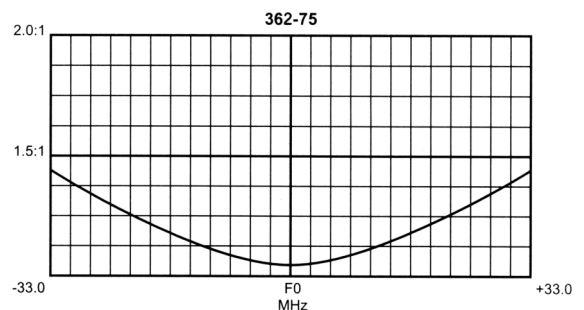


362-75-ABS

Electrical Specifications	361-75-ABS	362-75-ABS
Nominal Gain	Unity	Unity
Maximum Power, Watts	50	125
Frequency Range, MHz	806-960	760-960
Bandwidth VSWR: 1.5:1, MHz	140	66
Bandwidth VSWR: 2.0:1, MHz	N/A	100
Nominal Impedance, Ohms	50	50
Radiation Pattern	Omnidirectional	Omnidirectional
Polarization	Vertical	Vertical
Radome Material	High Impact ABS	High Impact ABS
Connector	N Female	N Female
Height, in (mm)	3.15 (80)	2 (51)
Diameter, in (mm)	9.3 (236)	4.5 (114)
Weight, lbs (kg)	2.5 (1.15)	0.375 (0.169)
Minimum Ground Plane Size, in (mm)	14 x 14 (355 x 355)	10 x 10 (254 x 254)



361-75



362-75

The F-33370 Filter is designed to pass frequencies between 216 and 222 MHz while at the same time rejecting VHF frequencies that are below 160 MHz. With an insertion loss of less than 1 dB, this filter will reject VHF frequencies at -60 dB or more.

- Small physical size
- Excellent performance, low VSWR, low insertion loss
- High power, can handle 100 Watts
- Totally maintenance free

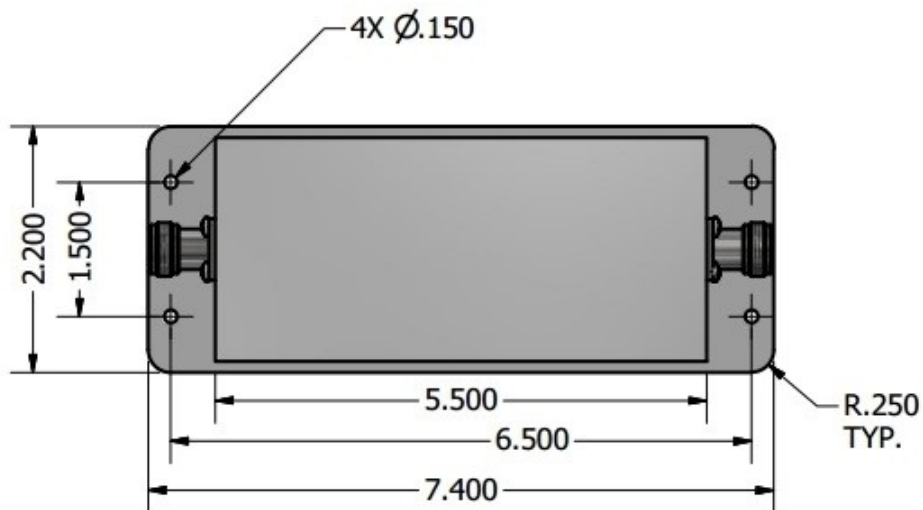


Electrical Specifications

Frequency Range, MHz	216-222
Insertion Loss, dB	= < 1
Return Loss, dB	= > 20
Rejection, dB	= > 60 @ 160 MHz
Power, Watts	100
Connectors (Both Ends)	N Female
Temperature, °C	-30 to +60

Mechanical Specifications

Length, in	7.4
Width, in	2.2
Height, in	1.2
Mounting Hole Size, in	.15



2-INCH CAVITY DUPLEXERS

66-FF-2P Series 2" Cavity Duplexers

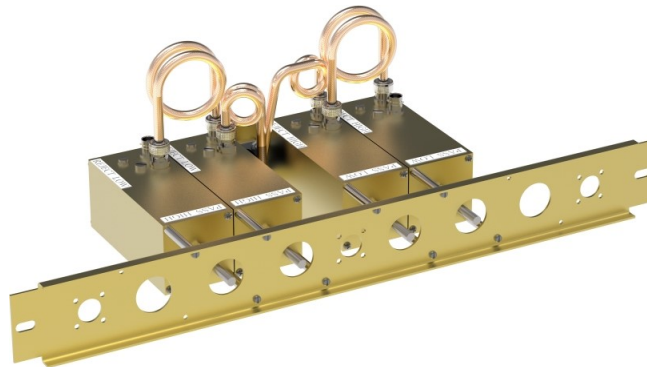
Comprod Inc. 2" base station duplexers are ideal for compact high isolation installations. These filters are designed for the combination of two frequencies that require extra isolation or can be used as efficient pre-selectors. Available in either 4 or 6 cavity configurations if higher levels of isolation are required. Selectivity can be determined by the field adjustable capacitors. Each cavity is temperature compensated for operation between -40°C to +60 °C. Each cavity has a gold alodine finish, silver plated loops, and silver plated tuning rods.



- Temperature Compensation - Ensures frequency stability
- High Attenuation - Minimizes desense and interference from adjacent systems
- Available in a 220 MHz version

Electrical Specifications	66-13-24	66-14-24	66-13-26	66-14-26
Frequency Range, MHz	132-150	144-174	132-150	144-174
Frequency Spacing Min.	4.5	4.5	3.0	3.0
Cavity Number	4	4	6	6
Cavity Diameter, in	2.0	2.0	2.0	2.0
Continuous Power Inputs, Watts	100	100	100	100
Connectors (Equipment/Antenna)	BNC/N	BNC/N	BNC/N	BNC/N
Insertion Loss	1.5	1.5	1.5	1.5
Channel Isolation, dB	70	70	80/90	80/90
VSWR	1.3:1		1.3:1	
Temperature, °C	-40 to +60	-40 to +60	-40 to +60	-40 to +60
Mechanical Specifications	66-13-24	66-14-24	66-13-26	66-14-26
Dimensions, in (H x W X D)	5.25 x 19 x 7.25		5.25 x 19 x 7.25	
Mounting	19" Rack Mount			

These duplexers are available in other frequencies and configurations. Please call our technical support for additional models.

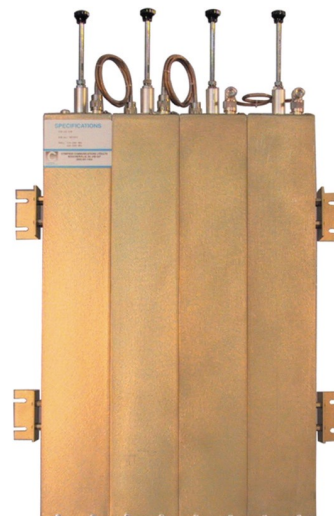


4-INCH CAVITY DUPLEXERS

66-FF-44 Series (4) 4" Cavity Duplexers

Our 4" base station duplexers are ideal for high power, close frequency separation installations. These filters are designed for combining two frequencies or can be used as efficient pre-selectors. If higher levels of isolation are required, please consider using 6 cavity configurations. Selectivity can be determined by the field adjustable capacitors. Each cavity is temperature compensated for operation between -40°C to +60°C. Each cavity has a gold alodine finish, silver plated loops, and plated tuning rods.

- Temperature Compensation
 - Ensures frequency stability
- High Attenuation
 - Minimizes desense and interference from adjacent systems
- Adjustable Loops



Electrical Specifications	66-13-44	66-40-44	66-80-44
Frequency Range, MHz	138-174	406-512	746-960
Frequency Spacing Min., MHz	0.5	5	9
Cavities, Diameter, in	(4) - 4" Square	(4) - 4" Square	(4) - 4" Square
Continuous Power Input, Watts	350	350	150
Connectors	N Female	N Female	N Female
Insertion Loss, dB	1.5 dB	0.8 dB	0.8 dB
Channel Isolation	70 dB	75 dB	90 dB
VSWR	1.2:1	1.2:1	1.2:1
Temperature, °C	-40 to +60	-40 to +60	-40 to +60

Mechanical Specifications	66-13-44	66-40-44	66-80-44
Dimensions, in (H x W X D)	31 x 19 x 4	4 x 19 x 15	4 x 19 x 12
Weight, lbs (kg)	30 (13.6)	18 (8.2)	16 (7.3)
Mounting	19" Rack Mount	19" Rack Mount	19" Rack Mount

Order Information	Frequency	Wall Mount	4 Cavities
66-13-4X	138-174 MHz	66-13-44WM	66-13-44
66-40-4X	406-470 MHz	66-40-44WM	66-40-44
66-74-4X	746-806 MHz	66-74-44WM	66-74-44
66-80-4X	806-896 MHz	66-80-44WM	66-80-44
66-90-4X	896-960 MHz	66-90-44WM	66-90-44

4-INCH CAVITY DUPLEXERS

66-FF-46 Series (6) 4" Cavity Duplexers

Our 6 cavity 4" base station duplexers are ideal for high power close frequency separation installations. These filters are designed for the combination of 2 frequencies that require extra isolation or can be used as an efficient pre-selector. If higher levels of isolation are required, please consider using the 8 cavity configuration. Selectivity can be determined by the field adjustable loops. Each cavity is temperature compensated for operation between -40°C to +60°C. Each cavity has a gold alodine finish, silver plated loops, and silver plated tuning rods.



- Compensation
 - Ensures frequency stability
- High Attenuation
 - Minimizes desense and interference from adjacent systems

Electrical Specifications	66-13-46	66-40-46	66-80-46
Frequency Range, MHz	138-174	406-512	746-960
Frequency Spacing Min., MHz	0.5	5.0	3.6
Cavities, Diameter, in	(6) - 4" Square	(6) - 4" Square	(6) - 4" Square
Continuous Power Input, Watts	350	350	350
Connectors	N Female	N Female	N Female
Insertion Loss, dB	2.1	1.2	1.2
Channel Isolation @ Min. Sep. dB	85	100	85
VSWR	1.22:1	1.22:1	1.22:1
Temperature, °C	-40 to +60	-40 to +60	-40 to +60

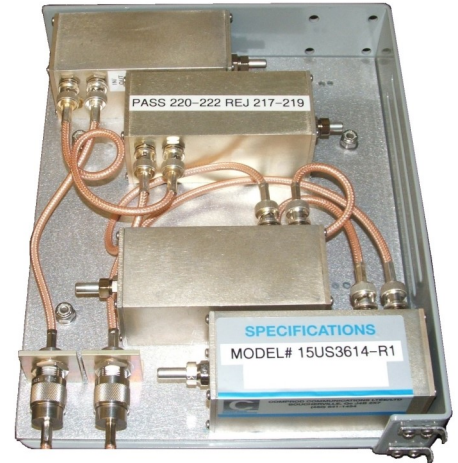
Mechanical Specifications	66-13-46	66-40-46	66-80-46
Dimensions, in (H x W X D)	31 x 19 x 8	8 x 19 x 15	8 x 19 x 12
Weight, lbs (kg)	45 (20.25)	27 (12.15)	24 (10.8)
Mounting	19" Rack Mount	19" Rack Mount	19" Rack Mount

Order Information	Frequency	Wall Mount	6 Cavities
66-13-46	138-174 MHz	66-13-46WM	66-13-46
66-40-46	406-512 MHz	66-40-46WM	66-40-46
66-80-46	746-960 MHz	66-80-46WM	66-80-46

2-INCH CAVITY FILTER

2" Cavity Filter

Our 2" filters are ideal for compact high isolation installations. These filters are designed for the isolation of two frequencies or can be used as efficient pre-selectors. Available in either 4 or 6 cavity configurations if higher levels of isolation are required. Each cavity is temperature compensated for operation between -40°C to +60 °C. Each cavity has a gold alodine finish, silver plated loops, and silver plated tuning rods.

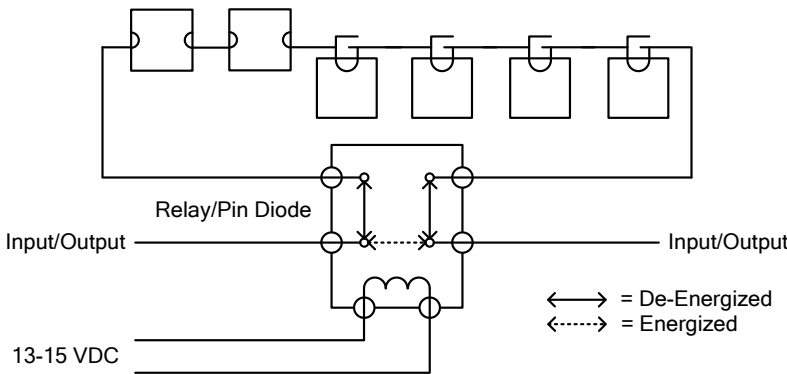


4-cavity version

Electrical Specifications

Frequency Range, MHz	215-222
Frequency Spacing Min., MHz	1
Cavities, Diameter, in	(6) - 2" Square
Continuous Power Input, Watts	100
Connectors	N Female
Insertion Loss, dB	3.2
Channel Isolation @ Min. Sep. dB	50
VSWR	1.22:1
Temperature, °C	-40 to +60

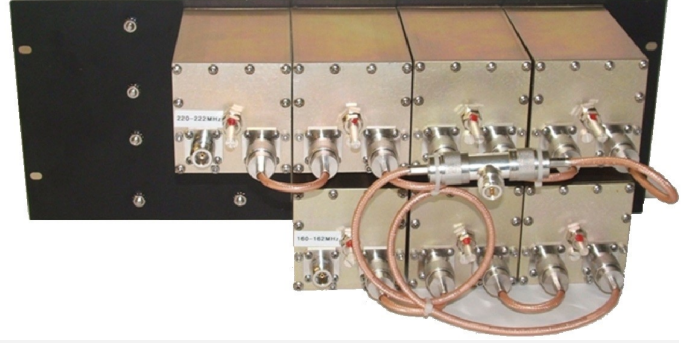
Pass: 217-219 MHz
Reject: 220-222 MHz



3-INCH CAVITY DUPLEXER

3" Cavity Band Pass Duplexer VHF/220

For use with Comprod single feed line of dual band antenna. Our 3" base station duplexers are ideal for compact high isolation installations. These filters are designed for the combination of two frequencies that require extra isolation or they can be used as efficient pre-selectors. Each cavity is temperature compensated for operation between -40°C to +60 °C. Each cavity has a gold alodine finish, silver plated loops, and silver plated tuning rods.



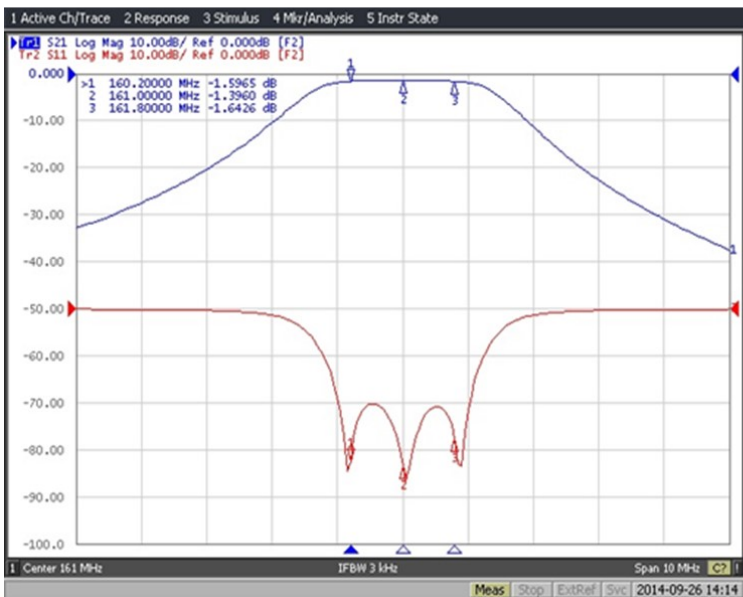
Electrical Specifications

Frequency Range, MHz	144-222
Frequency Spacing Min., MHz	8
Cavities, Diameter, in	(7) - 3" Square
Continuous Power Input, Watts	125
Connectors	N Female
Insertion Loss, dB	2.2
Channel Isolation @ Min. Sep. dB	90
VSWR	1.5:1
Temperature, °C	-40 to +60

Mechanical Specifications

Mounting	19" Rack
Dimensions, in (W, H, D)	19 x 7 x 7
Weight, lbs	15

Antenna to 160-162 MHz Port



Antenna to 220-222 MHz Port





Our Mission:

As a market leader in RF technology, we are committed to delivering best-in-class products and services to Public Safety, Utility, Transportation, Defense and Government organizations around the world.



US HEAD OFFICE: 3405 N. Benzing Rd.
Orchard Park, NY 14127

CA HEAD OFFICE: 88 Industrial Blvd.
Boucherville, QC, J4B

REGIONAL SALES OFFICE: 205-259 Midpark Way S.E.
Calgary, AB, T2X 1M2



Tel: US 1.877.825.2007 / CAN 1.800.603.1454
Email: sales@comprodcom.com
Fax: 1.800.554.1033