

SINGLE-BAND IN-BUILDING ANTENNAS

148-960 MHz

Our In-building antennas are designed to provide excellent coverage solutions in order for external Public Safety Radio Frequencies to propagate within buildings, tunnels or public use environments.

We offer a variety of antennas with Fire Retardant 6200 Kydex radomes. These materials are designed for In-building applications and inside public transport vehicles such as underground trains, vans, buses and trains. They meet the recommended fire safety practices of both the Federal Transit Administration (FTA) and the Federal Rail Administration (FRA) for smoke emission and flammability as tested under ASTM E-662 and ASTM E-162.

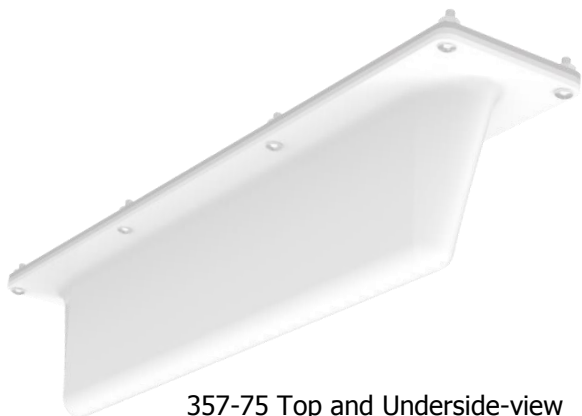
Our antennas have been installed worldwide and provide RF coverage inside nuclear power plants, correctional institutions, tunnels, high-rise buildings, subways, shopping malls, parking garages, power plants, high-security office networks and mine shafts.

Note: add the material and connector type to the part number when ordering:

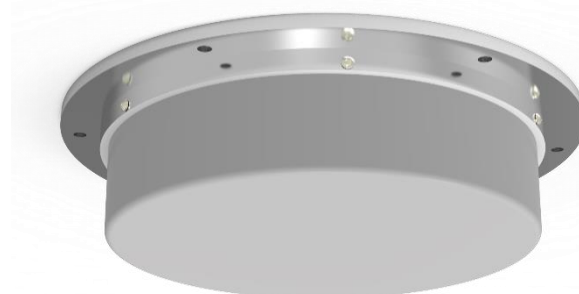
- ABS is for outdoor use and is grey in color (Default)
- KYDEX is for indoor use and is white in color



Electrical Specifications	357-75	360-75	361-75	362-75
Frequency Range, MHz	148-174	406-512	806-960	806-960
Nominal Gain	Unity	Unity	Unity	Unity
Bandwidth 1.5:1 VSWR, MHz	3	20	140	66
Bandwidth: 2.0:1 VSWR, MHz	4	40	140	100
Polarization	Vertical	Vertical	Vertical	Vertical
Pattern	Omnidirectional	Omnidirectional	Omnidirectional	Omnidirectional
Power Rating, Watts	150	50	50	100
Nominal Impedance, Ohms	50	50	50	50
Radome	ABS / 6200 Kydex	ABS / 6200 Kydex	ABS / 6200 Kydex	ABS / 6200 Kydex
Color	Grey / White	Grey / White	Grey / White	Grey / White
Standard Termination	UHF / BNC / N Female	UHF / BNC / N Female	N Female	N Female
Mechanical Specifications	357-75	360-75	361-75	362-75
Width, in (mm)	4.0 (102)	3.0 (76)	3.15 (80)	2.0 (51)
Length, in (mm)	21.0 (533)	11.0 (279)	N/A	N/A
Height, in (mm)	3.0 (76)	3.25 (83)	N/A	N/A
Diameter, in (mm)	N/A	N/A	9.3 (236)	4.5 (114)
Weight, lbs (kg)	2.1 (0.945)	1.0 (0.45)	2.5 (1.15)	0.375 (0.169)
Required Minimum Ground Plane Size, in (mm)	36 x 48 (914 x 1219)	20 x 16 (508 x 406)	14 x 14 (355 x 355)	10 x 10 (254 x 254)
Mounting hardware	Not Included	Not Included	Not Included	Not Included



357-75 Top and Underside-view



361-75



360-75



362-75 Top and Underside View

