

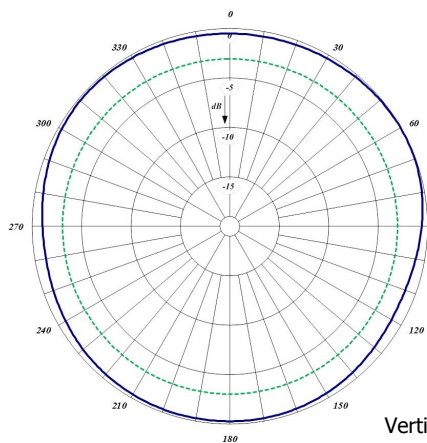
Log Periodic Series Antennas

The Log Periodic Antennas are available in VHF and UHF configurations. These antennas have an extremely good front-to-back ratio. They are wide-band and are ideal for base station or in-building applications. We have had great success with these antennas providing underground coverage within garages. Performance is constant throughout the band.

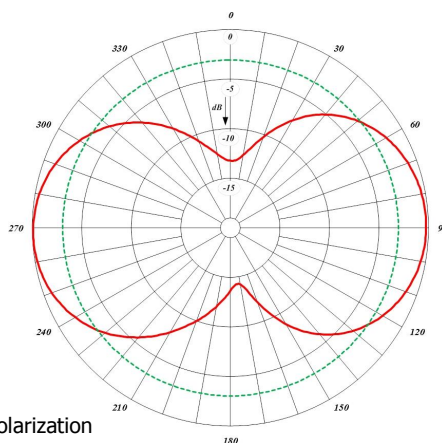
- Each antenna has a rugged design to withstand harsh environmental conditions.
- The mounting hardware supplied will permit either vertical or horizontal polarization.
- DC ground for lightning protection.
- Heavy-duty versions are available. Please contact a Comprod Inc. Technical support technician for consultation.



Electrical Specifications		415-70		465-70	
Frequency Range, MHz		406-512		406-512	
Nominal Gain, dBd		Unity		6.0	
Bandwidth: 1.5:1 VSWR, MHz		40		64	
Polarization		Vert. or Horiz.		Vert. or Horiz.	
Horizontal Beamwidth (Vert. Pol.)		N/A		106°	
Vertical Beamwidth (Vert. Pol.)		84°		60°	
Front to Back, dB		N/A		20	
Pattern		Directional		Directional	
Power Rating, Watts		250		250	
Nominal Impedance, Ohms		50		50	
Lightning Protection		DC Ground		DC Ground	
Standard Termination		Type N Male		Type N Male	
Mechanical Specifications		415-70		465-70	
Length, in (mm)		18 (457)		15 (381)	
Width, in (mm)		14.3 (362)		16 (406)	
Weight, lbs. (kg)		2.6 (1.2)		3.3 (1.47)	
Rated Wind Velocity, No Ice, mph (km/h)		160 (257)		150 (241)	
Rated Wind Velocity, 0.5" (13mm) ice, mph (km/h)		120 (193)		110 (177)	
Lateral Thrust @ c, wind, lbs. (kg)		12 (5.4)		14 (6.4)	
Torsional Moment @ 100 mph, ft*lb (kg*m)		6.3 (0.88)		6.4 (0.89)	
Projected Area, ft² (m²)		0.44 (0.04)		0.50 (0.05)	
Mounting Information: Max Pipe Size		1" to 2.5" (64mm)		1" to 2.5" (64mm)	
Order Information		406-430MHz	435-470MHz	406-470MHz	450-512MHz
415-70		415-70*1	415-70*2	N/A	415-70*3
465-70		N/A	N/A	465-70*1	465-70*2



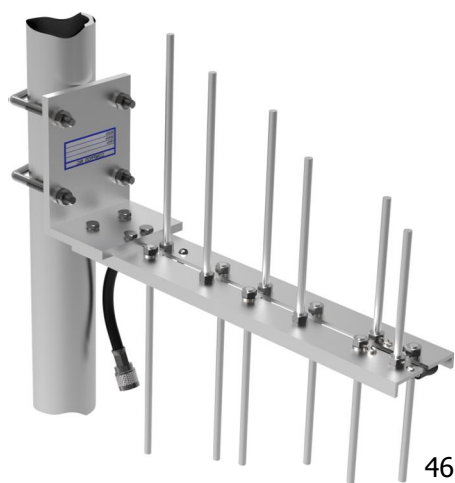
Horizontal Pattern



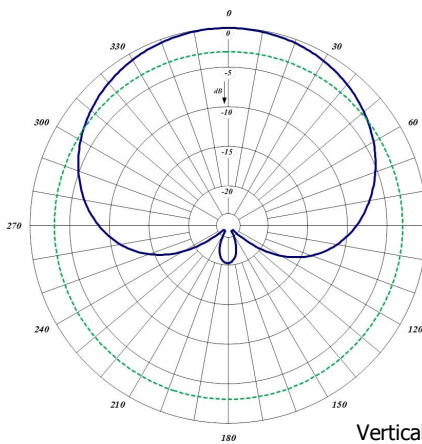
Vertical Pattern



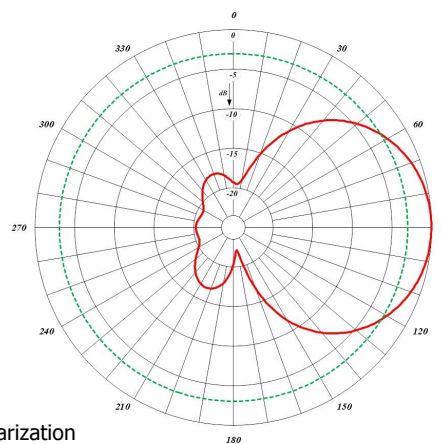
415-70



465-70



Horizontal Pattern



Vertical Pattern