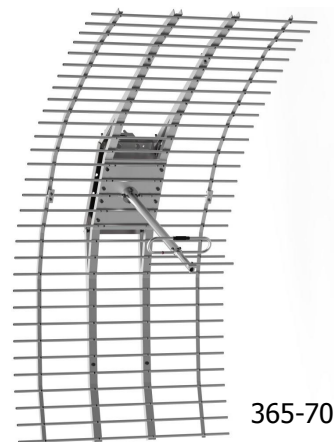


### UHF Corner Reflector Antenna Series

The Corner Reflector Antennas are available in VHF, UHF, 700/800/900 MHz configurations. These antennas have an extremely good front-to-back ratio. They are broadband and are ideal for point-to-point applications. Performance is constant throughout the band.

- Each antenna has a rugged design to withstand harsh environmental conditions.
- Single or Dual Dipole mounted in the front of a 90° reflector, providing good directivity and a very high front-to-back ratio.
- The 365-70 is a highly directive parabolic antennas consisting of a back-firing dipole reflector assembly for increased gain and directivity.
- These antennas have ultra-low VSWR ratings, and will not exceed 2.0:1 VSWR ratio with 0.5" (13 mm) of radial ice.
- The mounting hardware supplied will permit either vertical or horizontal polarization.
- DC ground for lightning protection.
- Heavy Duty versions are available. Please contact Comprod Inc. Technical support.

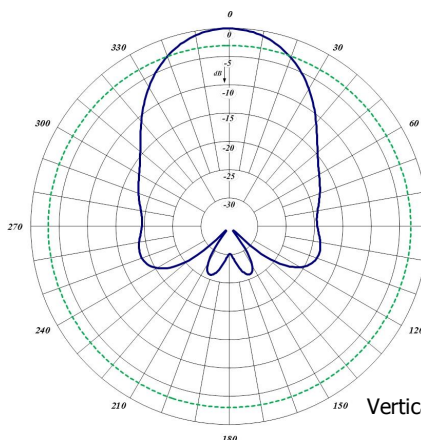


365-70

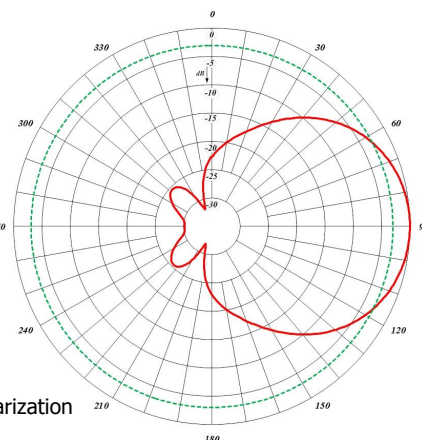
Electrical Specifications	440-70	440-70HD	442-70	365-70
Frequency Range, MHz	406-512	406-512	406-512	406-470
Nominal Gain, dBd	9.5	9.5	12.0	15.0
Bandwidth: 1.5:1 VSWR, MHz	64	64	64	20
Polarization	Vert. or Horiz.	Vert. or Horiz.	Vert. or Horiz.	Vert. or Horiz.
Horizontal Beamwidth (Vert. Pol.)	60°	60°	40°	32°
Vertical Beamwidth (Vert. Pol.)	45°	45°	34°	18°
Front to Back, dB	25	25	25	24
Pattern	Directional	Directional	Directional	Directional
Power Rating, Watts	100	100	100	250
Nominal Impedance, Ohms	50	50	50	50
Lightning Protection	DC Ground	DC Ground	DC Ground	DC Ground
Standard Termination	Type N Male	Type N Male	Type N Male	Type N Male
Electrical Specifications	440-70	440-70HD	442-70	365-70
Length, in (mm)	30 (762)	30 (762)	48 (1219)	82 (2083)
Width, in (mm)	50 (1905)	50 (1905)	50 (1905)	41 (1041)
Weight, lbs. (kg)	22 (10)	36 (16)	42 (19.1)	25 (11.3)
Rated Wind Velocity, No Ice, mph (km/h)	125 (201)	135 (217)	125 (201)	100 (161)
Rated Wind Velocity, 0.5" (13mm) ice, mph (km/h)	85 (137)	95 (153)	85 (137)	85 (137)
Lateral Thrust @ 100 mph, wind, lbs. (kg)	97 (44)	210 (934)	185 (84)	233 (109)
Projected Area, ft <sup>2</sup> (m <sup>2</sup> )	3.6 (0.34)	3.6 (0.34)	6.9 (0.64)	8.7 (0.8)
Mounting Information: (clamp included) for pipe size O.D. in (mm)	2.9 (74)	2.9 (74)	2.9 (74)	2.9 (74)



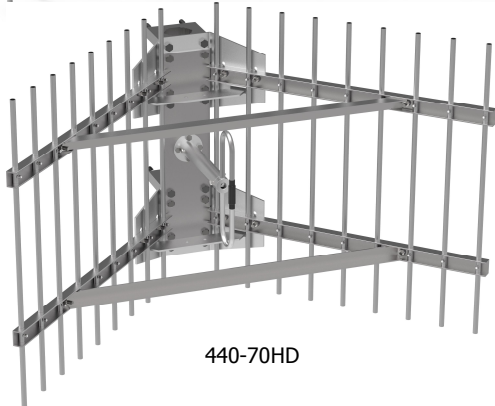
440-70



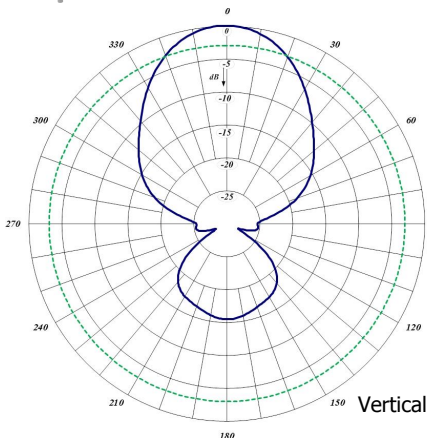
Horizontal Pattern



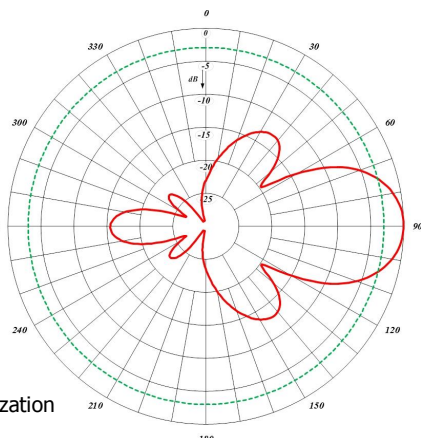
Vertical Pattern



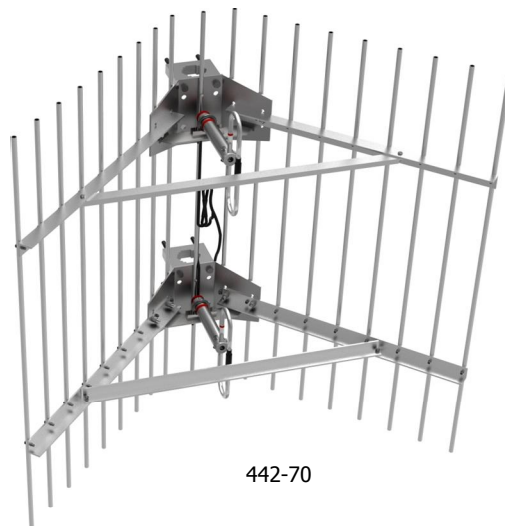
440-70HD



Horizontal Pattern



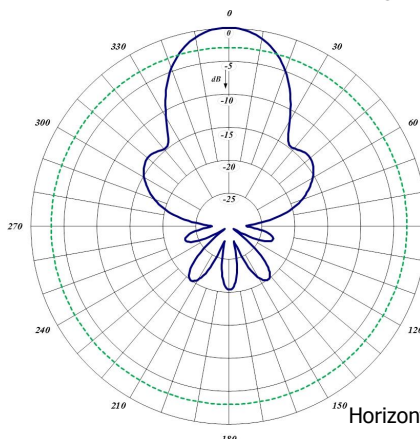
Vertical Pattern



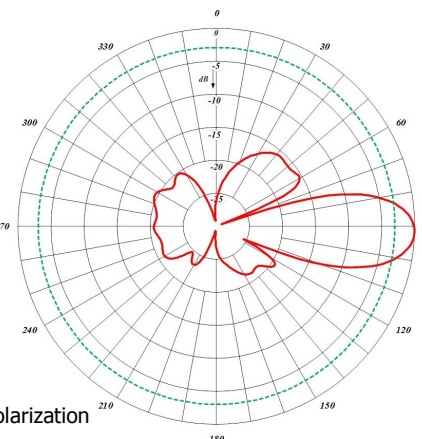
442-70



365-70



Horizontal Pattern



Vertical Pattern