

VHF Corner Reflector Antenna Series

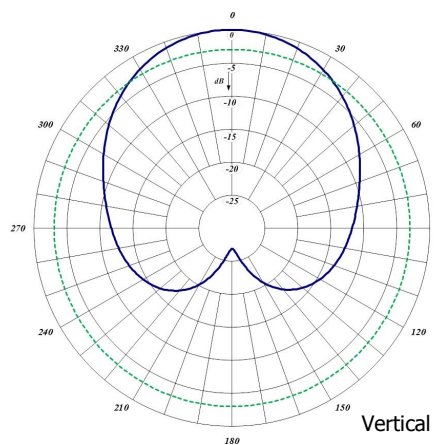
The Corner Reflector Antennas are available in VHF, UHF, 700/800/900 MHz configurations. These antennas have an extremely good front-to-back ratio. They are broadband and are ideal for point-to-point applications. Performance is constant throughout the band.

- Each antenna has a rugged design to withstand harsh environmental conditions.
- Single dipole mounted in the front of a 90° reflector, providing good directivity and a very high front-to-back ratio.
- These antennas have ultra-low VSWR ratings, and will not exceed 2.0:1 VSWR ratio with 0.5" (13 mm) of radial ice.
- The mounting hardware supplied allows either vertical or horizontal polarization.
- DC ground for lightning protection
- Heavy duty versions are available. Please contact a Comprod Inc. Technician for consultation.

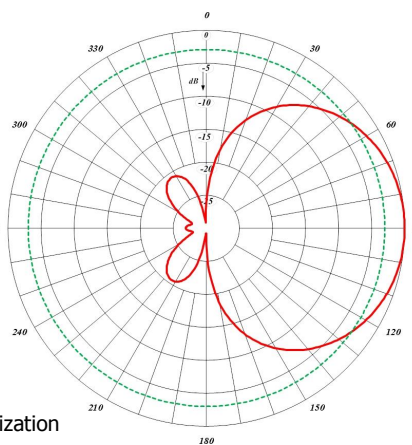


470-70HD

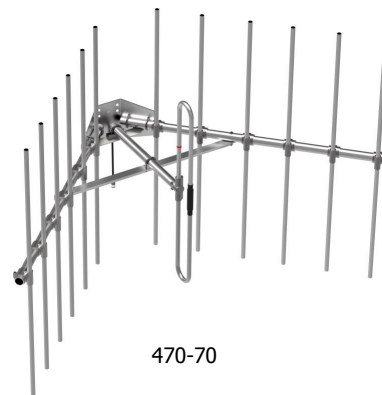
Electrical Specifications	470-70	470-70HD	471-70	471-70HD
Frequency Range, MHz	132-174	132-174	132-174	132-174
Nominal Gain, dBd	7.0	7.0	10.0	10.0
Bandwidth: 1.5:1 VSWR, MHz	15%	15%	15%	15%
Polarization	Vert. or Horiz.	Vert. or Horiz.	Vert. or Horiz.	Vert. or Horiz.
Horizontal Beamwidth (Vert. Pol.)	67°	67°	50°	50°
Vertical Beamwidth (Vert. Pol.)	75°	75°	66°	66°
Front to Back, dB	30	30	30	30
Pattern	Directional	Directional	Directional	Directional
Power Rating, Watts	250	250	250	250
Nominal Impedance, Ohms	50	50	50	50
Lightning Protection	DC Ground	DC Ground	DC Ground	DC Ground
Standard Termination	Type N Male	Type N Male	Type N Male	Type N Male
Mechanical Specifications	470-70	470-70HD	471-70	471-70HD
Length, in (mm)	48 (1219)	48 (1219)	72 (1829)	72 (1829)
Width, in (mm)	75 (1905)	75 (1905)	120 (3048)	120 (3048)
Weight, lbs. (kg)	39 (17.7)	57 (25.8)	66 (30)	72 (32.7)
Rated Wind Velocity, No Ice, mph (km/h)	100 (61)	140 (225)	100 (61)	140 (225)
Rated Wind Velocity, 0.5" (13mm) ice, mph (km/h)	85 (137)	100 (161)	85 (137)	100 (161)
Lateral Thrust @ 100 mph, wind, lbs. (kg)	144 (65)	236 (107)	320 (145)	398 (181)
Projected Area, ft² (m²)	5.3 (0.5)	8.8 (0.82)	11.9 (1.10)	14.8 (1.38)
Mounting Information: (clamp included) for pipe size O.D. in (mm)	2.9 (73)	2.9 (73)	2.9 (73)	2.9 (73)



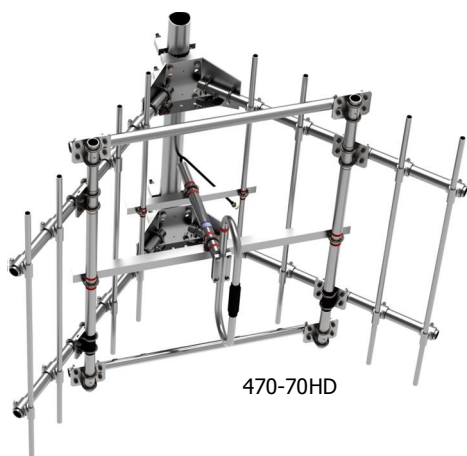
Horizontal Pattern



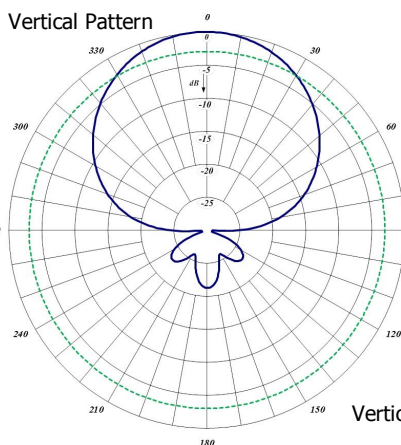
Vertical Polarization



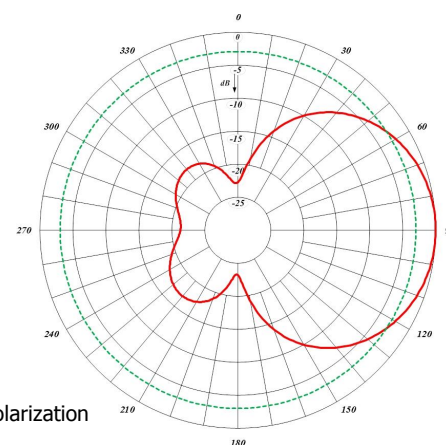
470-70



470-70HD

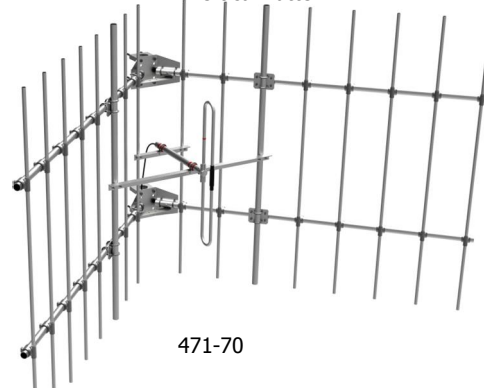


Horizontal Pattern

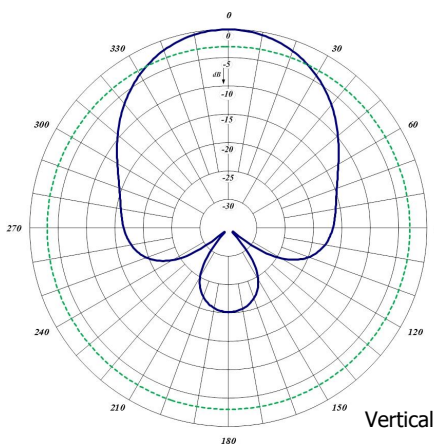


Vertical Polarization

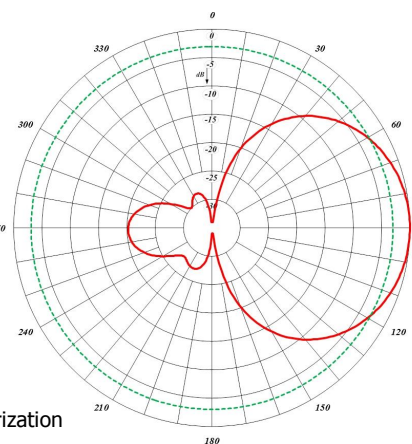
Vertical Pattern



471-70

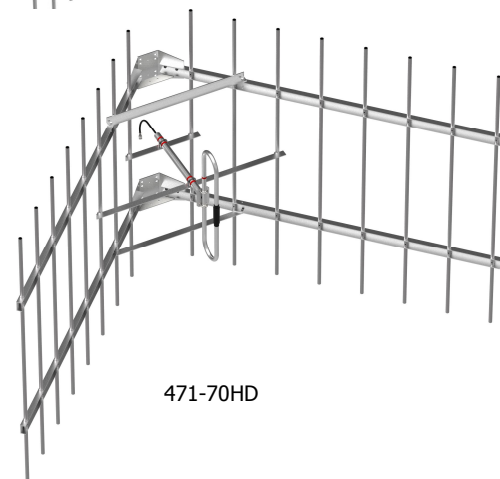


Horizontal Pattern



Vertical Polarization

Vertical Pattern



471-70HD