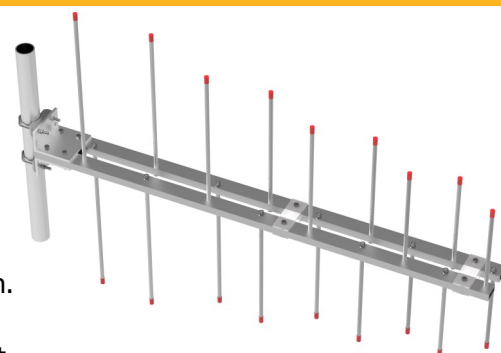


Log Periodic Series Antennas

The Log Periodic Antennas are available in VHF and UHF configurations. These antennas have an extremely good front-to-back ratio. They are wideband and are ideal for base station or in-building applications. These antennas are great for providing underground coverage within garages. Performance is constant throughout the band.

- Each antenna has a rugged design to withstand harsh environmental conditions.
- The mounting hardware supplied will permit either vertical or horizontal polarization.
- DC ground for lightning protection.
- Heavy-duty versions are available. Please contact a Comprod Inc. Technical support technician for consultation.

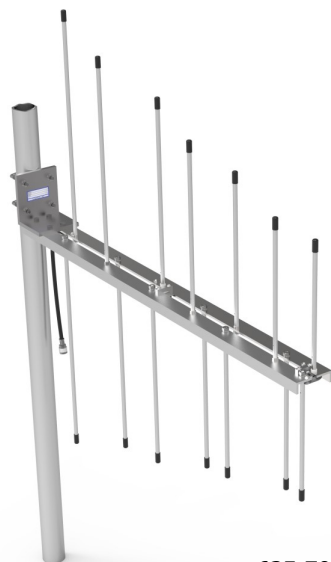


638-70

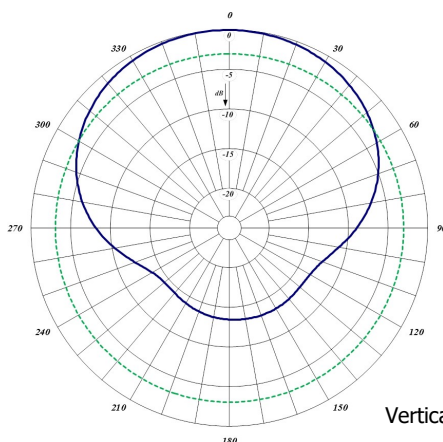
Electrical Specifications	635-70	636-70	638-70
Frequency Range, MHz	132-174	132-174	138-174
Nominal Gain, dBd	6.0	6.0	8.0
Bandwidth: 1.5:1 VSWR, MHz	42	42	36
Polarization	Vert. or Horiz.	Vert. or Horiz.	Vert. or Horiz.
Horizontal Beamwidth (Vert. Pol.)	106°	106°	75°
Vertical Beamwidth (Vert. Pol.)	60°	30°	55°
Front to Back, dB	25	25	25
Pattern	Directional	Directional	Directional
Power Rating, Watts	500	500	500
Nominal Impedance, Ohms	50	50	50
Lightning Protection	DC Ground	DC Ground	DC Ground
Standard Termination	Type N Male	Type N Male	Type N Male

Electrical Specifications	635-70	636-70	638-70
Length, in (mm)	42 (1067)	42 (1067)	60 (1524)
Width, in (mm)	44 (1118)	44 (1118)	44.5 (1130)
Weight, lbs. (kg)	8 (3.6)	8 (3.6)	16.8 (7.8)
Rated Wind Velocity, No Ice, mph (km/h)	158 (254)	158 (254)	150 (241)
Rated Wind Velocity, 0.5" (13mm) ice, mph (km/h)	108 (173)	108 (173)	108 (173)
Lateral Thrust @ c, wind, lbs. (kg)	31 (14)	31 (14)	47.5 (21.5)
Torsional Moment @ 100 mph, ft*lb (kg*m)	56 (7.8)	N/A	121 (16.7)
Projected Area, ft² (m²)	0.86 (0.08)	0.86 (0.08)	1.26 (0.120)
Mounting Information: (clamp included) for pipe size O.D. in (mm)	1" to 2.5" (64mm)	1" to 2.5" (64mm)	1" to 2.5" (64mm)

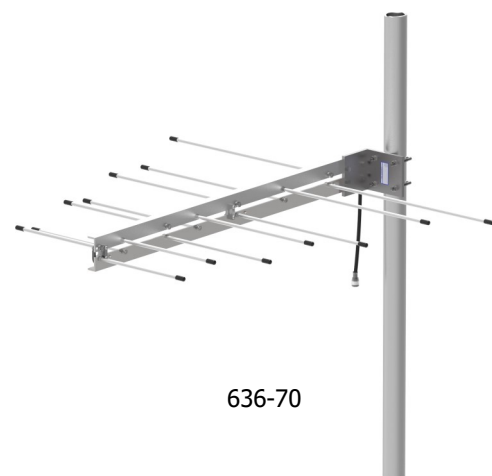
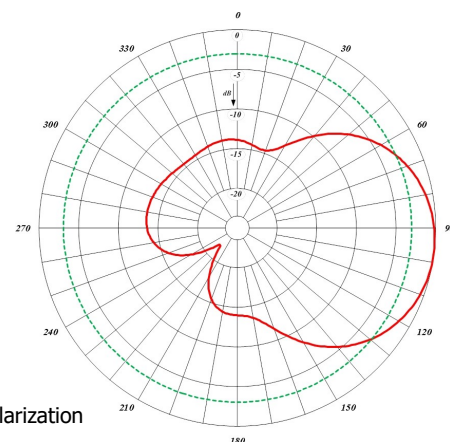
Order Information	End Mount	Center Mount
635-70	635-70	N/A
636-70	N/A	636-70
638-70	638-70	N/A



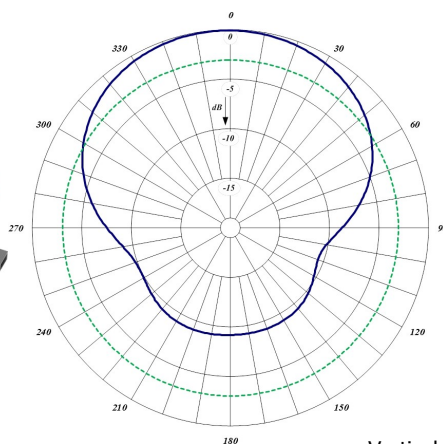
635-70



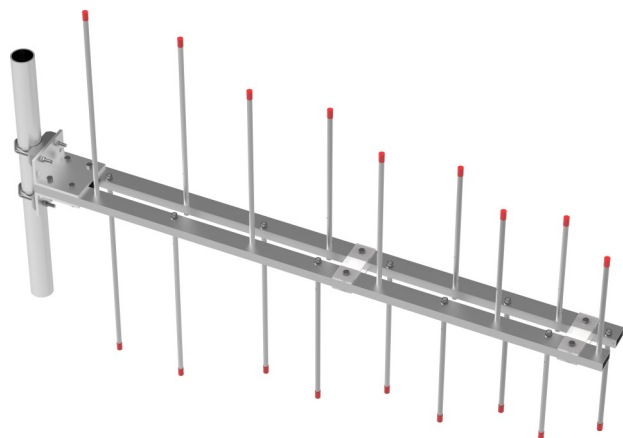
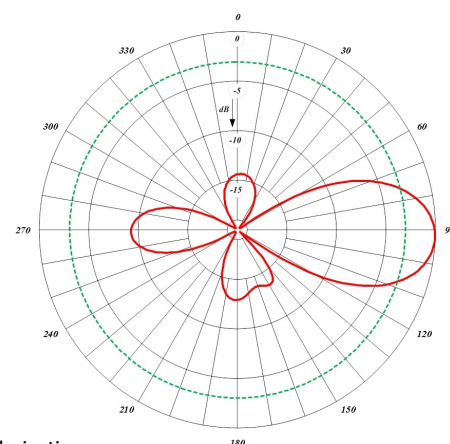
Vertical Polarization



636-70



Vertical Polarization



638-70