

790 SERIES ENCLOSED DIPOLE**746-960 MHz****790 Series Enclosed Dipoles**

The 790 Series Enclosed Dipoles are available in 2, 4, or 9 dipole configurations. All of our antennas can be completely customized to your particular applications.

- Each antenna is offered in an offset or bi-directional pattern.
- Broadband antennas are ideal for trunking or cellular applications.
- Weatherproof radome to ensure continuous service during severe environmental conditions.
- Versions with 3, 6, and 9 degree downtilt are also available.

794-70



Electrical Specifications	792-70	794-70	799-70
Frequency Range, MHz	746-960	746-960	746-960
Nominal Gain, dBd	5.0	8.0	10.0
Number of Dipoles	2	4	9
Bandwidth 1.5:1 VSWR, MHz	90	90	90
Polarization	Vertical	Vertical	Vertical
Pattern	Offset or Bi-Dir.	Offset or Bi-Dir.	Offset or Bi-Dir.
Power Rating, Watts	150	300	500
Nominal Impedance, Ohms	50	50	50
Lightning Protection	DC Ground	DC Ground	DC Ground
Standard Termination	Type N Male	Type N Male	Type N Male

Mechanical Specifications	792-70	794-70	799-70
Length, in (mm)	22 (559)	44.5 (1130)	94 (2388)
Width(1/2 Wave Spacing), in (mm)	2.5 (64)	2.5 (64)	2.5 (64)
Weight, lbs. (kg)	8.8 (4)	14 (6.5)	24 (11)
Rated Wind Velocity, No Ice, mph (km/h)	100 (162)	100 (162)	100 (162)
Rated Wind Velocity, 0.5" (13mm) ice, mph (km/h)	85 (137)	85 (137)	85 (137)
Lateral Thrust @ 100 mph, wind, lbs. (kg)	36.4 (16.5)	73 (33)	153 (59)
Projected Area, ft ² (m ²)	1.4 (0.13)	2.7 (0.25)	5.7 (0.53)
Mounting Information (Clamps incl.)	1.5-2.88" O.D.	1.5-2.88" O.D.	1.5-2.88" O.D.

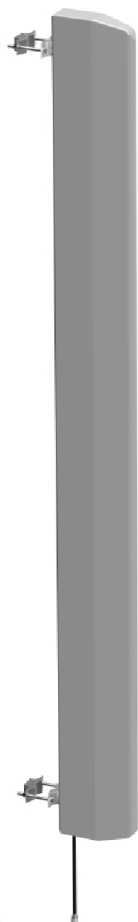
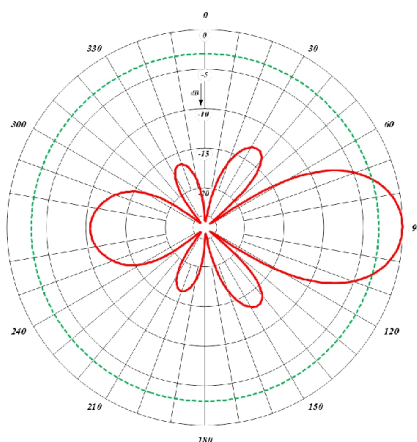
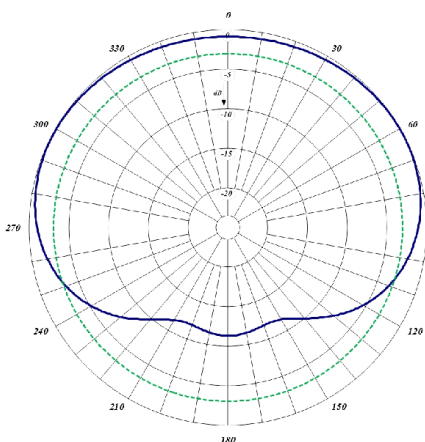
Order Information	746-896MHz	806-960MHz
792-70	792-70*1	792-70*2
794-70	794-70*1	794-70*2
799-70	799-70*1	799-70*2

790 SERIES ENCLOSED DIPOLE

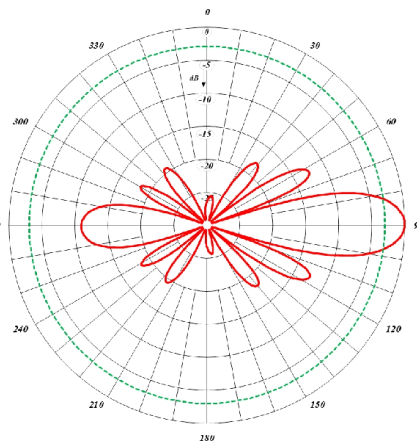
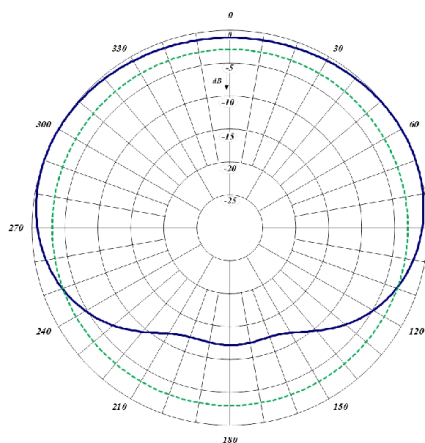
746-960 MHz



792-70



799-70



794-70

