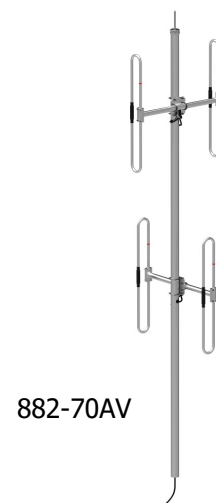


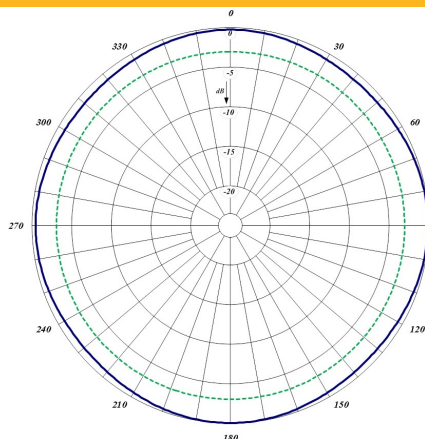
### 880AV Series VHF Exposed Dipole Array

The 880AV Series VHF Exposed Dipole Array are available in 2 and 4 dipole set configurations. All of our antennas can be completely customized to your particular applications. Our antennas can be Black Anodized, top mount only, and heavy duty versions are available.

- Each antenna is offered in two versions: Omni or bidirectional. (Image shows Omni)
- These antennas have only internal cabling, fixed dipole-mast spacing and adjustable pattern control.
- Heavy-duty versions are available. Please contact a Comprod Inc. Technical support technician for consultation.

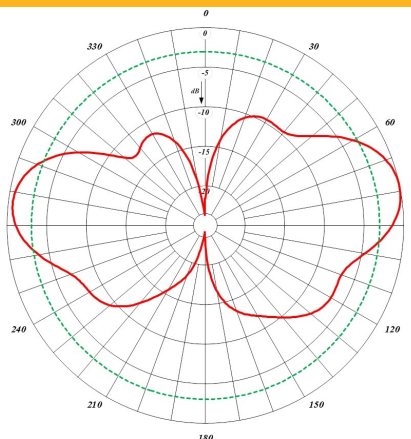


Electrical Specifications	882-70AV	884-70AV
Frequency Range, MHz	108-138	108-138
Nominal Gain, dBd	3.0-5.5	6.0-8.5
Number of Dipoles	2 Sets	4 Sets
Bandwidth 1.5:1 VSWR, MHz	30	30
Polarization	Vertical	Vertical
Pattern	Omni or Bi-Dir.	Omni or Bi-Dir.
Power Rating, Watts	450	500
Nominal Impedance, Ohms	50	50
Lightning Protection	DC Ground	DC Ground
Standard Termination	Type N Male	Type N Male
Mechanical Specifications	882-70AV	884-70AV
Length, in (mm)	157 (3988)	306 (7772)
Width , in (mm)	45 (1143)	46 (1168)
Weight, lbs. (kg)	49 (8.6)	105 (47.6)
Rated Wind Velocity, No Ice, mph (km/h)	140 (225)	100 (162)
Rated Wind Velocity, 0.5" (13mm) ice, mph (km/h)	110 (177)	80 (129)
Lateral Thrust @ 100 mph, wind, lbs. (kg)	154 (70)	307 (139)
Bending Moment @ top clamp: 100 mph, ft*lb (kg*m)	524 (72.5)	2039 (282)
Projected Area, ft <sup>2</sup> (m <sup>2</sup> )	5.6 (0.52)	11 (1.04)
Mounting Information Mast O.D.	2.9" (73mm)	3.5" (89mm)
Order Information	Heavy Duty	Black Anodized
882-70AV	882-70AVHD	882-70AVHDB
884-70AV	884-70AVHD	884-70AVHDB

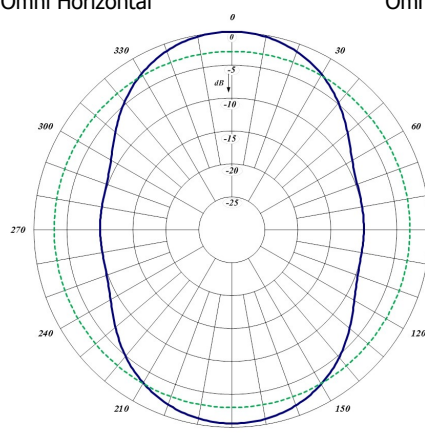


882-70AV

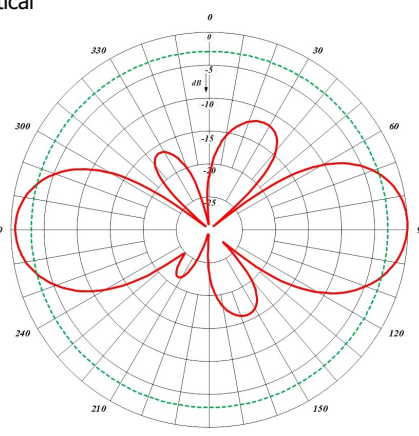
Omni Horizontal



Omni Vertical

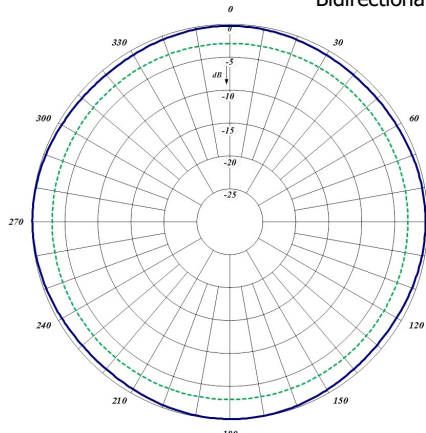


Bidirectional Horizontal



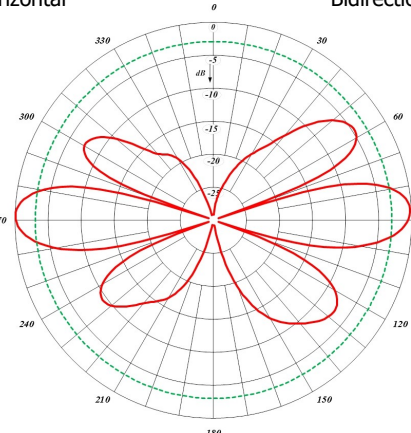
Bidirectional Vertical

882-70AV

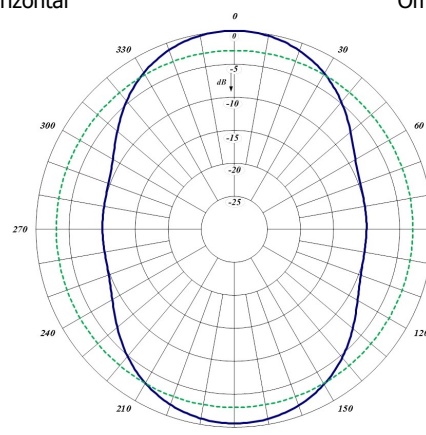


884-70AV

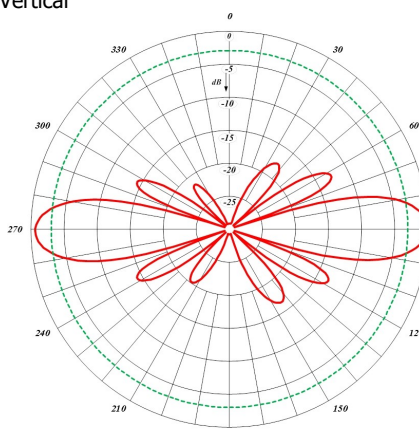
Omni Horizontal



Omni Vertical



Bidirectional Horizontal



Bidirectional Vertical

884-70AV

