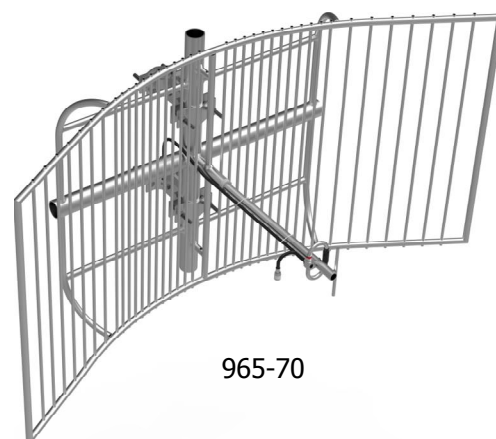


Parabolic Reflector Series Antennas

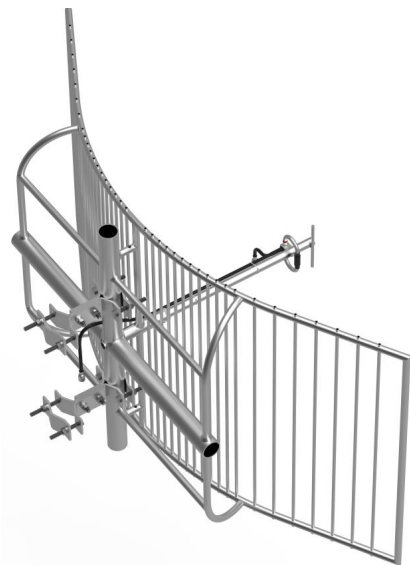
The Reflector antenna is a SRSP-507 Category A compliant antenna. These antennas have an extremely good front-to-back ratio. They are broadband and are ideal for point-to-point applications where restrictions on beam width are present. Performance is constant throughout the band.

- SRSP-507 Category A Compliant.
- Mechanical resonance reducing design.
- Each antenna has a rugged design to withstand harsh environmental conditions.
- The 965-70 is a highly-directive parabolic antenna consisting of a back-firing dipole reflector assembly for increased gain and directivity.
- These antennas have ultra-low VSWR ratings, and will not exceed 1.5:1 VSWR ratio with 0.5" (13 mm) of radial ice.
- The mounting hardware supplied will permit either vertical or horizontal polarization.
- DC ground for lightning protection.
- Black Anodized and Dipole Radome protected versions are available. Please Contact a Comprod Inc. Technical support technician for consultation.
- 965-70B is Black Anodize and 965-70BR is Black Anodize with a Radome

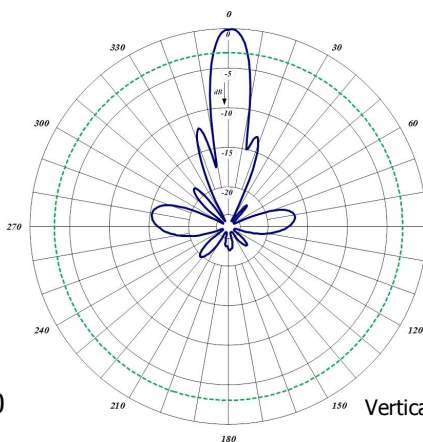


965-70

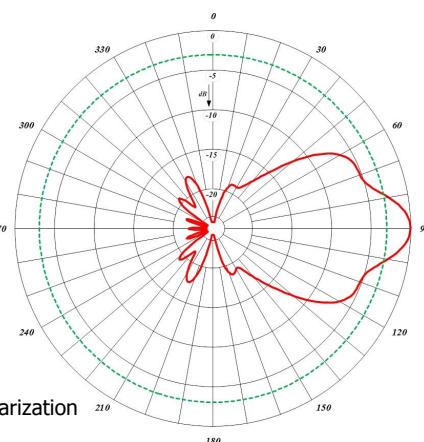
Electrical Specifications	965-70	965-70B	965-70BR
Frequency Range, MHz	806-960	806-960	806-960
Nominal Gain, dBd	16.5	16.5	16.5
Bandwidth: 1.5:1 VSWR, MHz	72	72	72
Polarization	Vert. or Horiz.	Vert. or Horiz.	Vert. or Horiz.
Horizontal Beamwidth (Vert. Pol.)	12	12	12
Vertical Beamwidth (Vert. Pol.)	30	30	30
Front to Back, dB	25	25	25
Pattern	Directional	Directional	Directional
Power Rating, Watts	200	200	200
Nominal Impedance, Ohms	50	50	50
Lightning Protection	DC Ground	DC Ground	DC Ground
Standard Termination	Type N Male	Type N Male	Type N Male
Electrical Specifications	965-70	965-70B	965-70BR
Length, in (mm)	68 (1727)	68 (1727)	68 (1727)
Width, in (mm)	36 (914)	36 (914)	36 (914)
Weight, lbs. (kg)	49 (22.3)	49 (22.3)	51 (23.2)
Rated Wind Velocity, No Ice, mph (km/h)	110 (177)	110 (177)	110 (177)
Rated Wind Velocity, 0.5" (13mm) ice, mph (km/h)	85 (137)	85 (137)	85 (137)
Lateral Thrust @ 100 mph, wind, lbs. (kg)	1.9 (0.46)	1.9 (0.46)	1.9 (0.46)
Projected Area, ft ² (m ²)	4.9 (0.46)	4.9 (0.46)	5 (0.47)
Mounting Information: (clamp included) for pipe size O.D. in (mm)	112-85	112-85	112-85



965-70

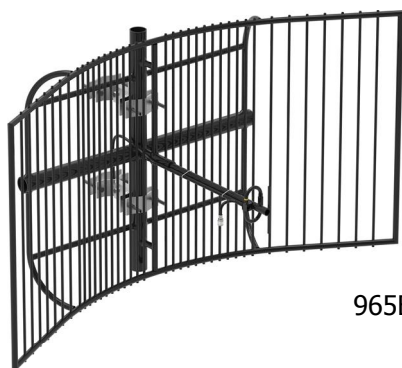


Horizontal Pattern

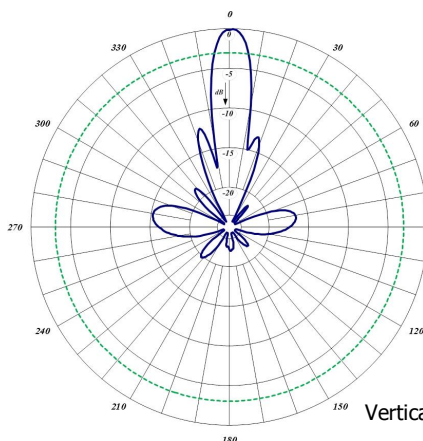


Vertical Polarization

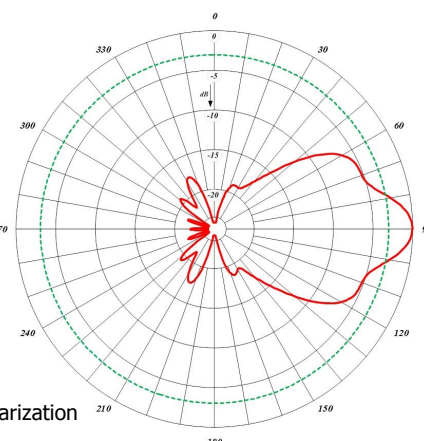
Vertical Pattern



965B-70



Horizontal Pattern

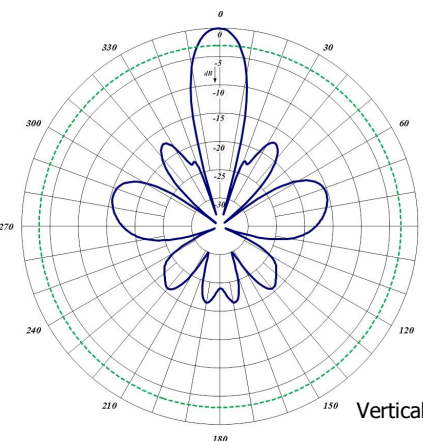


Vertical Polarization

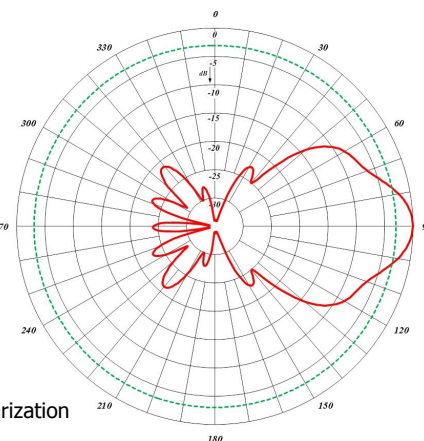
Vertical Pattern



965-70 BR



Horizontal Pattern



Vertical Polarization

Vertical Pattern