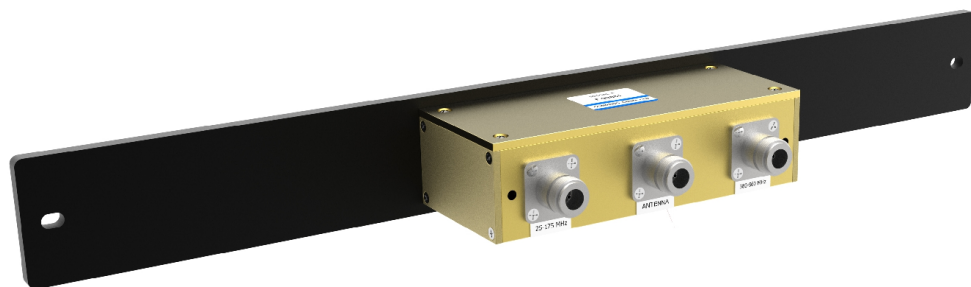


**X-BAND COUPLER**

**25-960MHz**

Comprod Inc. Cross Band Couplers are designed for easy installation, reducing coaxial runs, and for in-building applications with multi-band antennas. They allow multiple bands to share the same transmission lines. They are available in VHF, UHF and 800/900MHz bands. They can be tower mounted (TM), rack mounted (RM), tray-mounted (TRM) or stand alone.



Electrical Specifications		XBC-02-38	XBC-02-38R	XBC-38-80	XBC-38-80R	XBC-38-80RX
Frequency Range, MHz	1st	25-175	25-175	380-512	380-512	380-512
	2nd	380-960	380-960	806-960	806-960	806-960
Typical Loss, dB	1st	0.35	0.35	0.20	0.35	0.30
	2nd	0.50	0.50	0.20	0.50	0.50
Isolation, dB		40	40	40	40	40
Power Rating, Watts	1st	250	Rx Only	250	Rx Only	250
	2nd	250	Rx Only	250	Rx Only	Rx Only
Connectors		N Female				
VSWR		1.25:1				
Temperature °C		-40 to +60	-40 to +60	-40 to +60	-40 to +60	-40 to +60
Mechanical Specifications		XBC-02-80	XBC-02-80R	XBC-38-80	XBC-38-80R	XBC-38-80RX
Dimensions		DEPENDS ON Mounting CONFIGURATION				
Rack Mount		DEPENDS ON Mounting CONFIGURATION				
Tower Mount		DEPENDS ON Mounting CONFIGURATION				
Order Information		19" Rack Mount	Tower Mount	Tray Mount	Without Bracket	
XBC-02-80		XBC-02-80-RM	XBC-02-80-TM	XBC-02-80-TRM	XBC-02-80-WB	
XBC-02-80R		XBC-02-80R-RM	XBC-02-80R-TM	XBC-02-80R-TRM	XBC-02-80R-WB	
XBC-38-80		XBC-38-80-RM	XBC-38-80-TM	XBC-38-80-TRM	XBC-38-80-WB	
XBC-38-80R		XBC-38-80R-RM	XBC-38-80R-TM	XBC-38-80R-TRM	XBC-38-80R-WB	
XBC-38-80RX		XBC-38-80RX-RM	XBC-38-80RX-TM	XBC-38-80RX-TRM	XBC-38-80RX-WB	