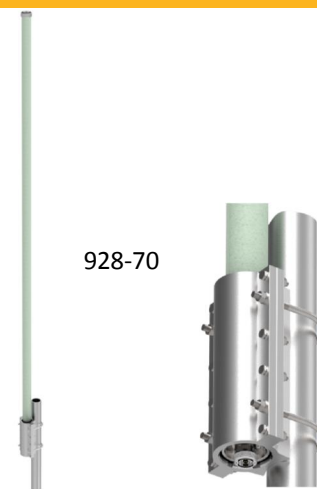


### Collinear Omnidirectional Antenna

The 928-70 Collinear Omni Antenna is available in three frequency splits: 746-806; 806-869 or 885-960 within the 746 to 960 MHz range.

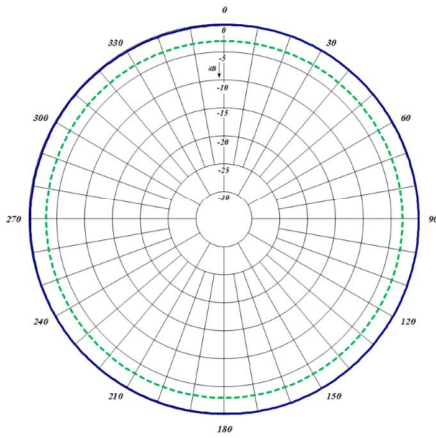
The antennas have an 8.5 dBd gain, and offer 6 fixed Electrical Downtilt options, based on customer requirements.

The antenna is constructed with a high quality fiberglass light-grey radome. The aluminum mounting hardware is included with the antenna.

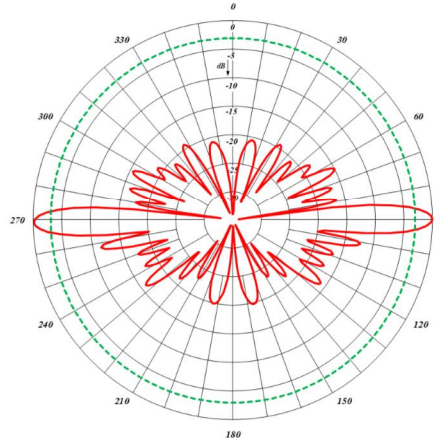


928-70

| Electrical Specifications                                     | 928-70-1; 928-70-2; 928-70-3               |             |             |
|---|--|-------------|-------------|
| Frequency Range, MHz (per Model 928-70-1; 928-70-2; 928-70-3) | 746-806; 806-869; 885-960                  |             |             |
| Nominal Gain, dBd   | 8.5  |             |             |
| Bandwidth 1.4:1 VSWR, MHz                                     | 75   |             |             |
| Polarization  | Vertical                                   |             |             |
| Horizontal Beamwidth (°)                                      | 360  |             |             |
| Vertical Beamwidth (°)  | 6.5  |             |             |
| Electrical Downtilt—Fixed (Options) (°)                       | 0, 1, 2, 3, 4, 5, 6                        |             |             |
| Pattern   | Omnidirectional                            |             |             |
| 3rd Order Intermodulation @ 2 X 43 dBm, dBc                   | < -150                                     |             |             |
| Power Rating, Watts   | 500  |             |             |
| Nominal Impedance, Ohms                                       | 50   |             |             |
| Lightning Protection  | DC Ground                                  |             |             |
| Standard Termination  | 7/16 DIN-Female                            |             |             |
| Mechanical Specifications                                     | 928-70-1/2/3                               |             |             |
| Max. Length, in (mm)  | 130 (3310)                                 |             |             |
| Diameter, in (mm)   | 2 (52)                                     |             |             |
| Weight, lbs. (kg) - with mounting kit                         | 26 (11.8)                                  |             |             |
| Rated Wind Velocity, mph (km/h)                               | 124 (200)                                  |             |             |
| Radome Material   | Fiberglass, light grey, RAL 7035           |             |             |
| Radiating Element Material                                    | Brass                                      |             |             |
| Operational Temperature, °C                                   | -55 to 70                                  |             |             |
| Mounting Hardware   | Pole mount included (U-bolts not included) |             |             |
| Order Information   | 746-806 MHz                                | 806-869 MHz | 885-960 MHz |
| Model   | 928-70-1                                   | 928-70-2    | 928-70-3    |



Horizontal Pattern



Vertical Pattern

928-70

