

CLAMPS

OMNIDIRECTIONAL PIPE-TO-ANGLE

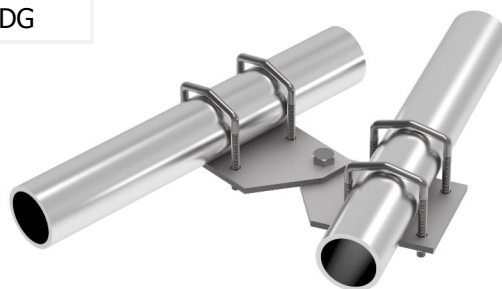
Model	Pipe	Angle	Clamp Material	Screw Material
175-85	1.5" to 3.5" dia.	3" x 3" max. 60°	Steel HDG	Steel HDG
176-85	1.5" to 3.5" dia.	5" x 5" max. 60°	Steel HDG	Steel HDG
177-85	1.5" to 3.5" dia.	8" x 8" max. 60°	Steel HDG	Steel HDG
178-85	1.5" to 3.5" dia.	3" x 3" max. 90°	Steel HDG	Steel HDG
179-85	1.5" to 3.5" dia.	5" x 5" max. 90°	Steel HDG	Steel HDG
180-85	1.5" to 3.5" dia.	8" x 8" max. 90°	Steel HDG	Steel HDG

HDG=Hot Dip Galvanized



OMNIDIRECTIONAL PIPE-TO-PIPE

Model	1st Pipe	2nd Pipe	Clamp Material	Screw Material
122-85	0.75" to 2.38 dia.	0.75" to 2.38 dia.	Aluminum	Steel HDG



PIPE-TO-FLAT SURFACE

Model	Pipe	Clamp Material	Screw Material
172-85	2.88" dia.	Aluminum	Steel HDG
173-85	2.38" dia.	Aluminum	Steel HDG

