

TRI-BAND IN-BUILDING ANTENNAS

Our In-building antennas are designed to provide excellent coverage solutions in order for external Public Safety Radio Frequencies to propagate within buildings, tunnels or public use environments.

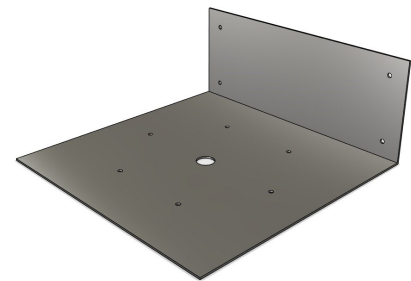
Our antennas can cover single or multiple frequency bands. We offer a wide variety of antennas with Fire Retardant 6200 Kydex radomes. These materials are designed for In-building applications and inside public transport vehicles such as underground trains, vans, buses and trains. They meet the recommended fire safety practices of both the Federal Transit Administration (FTA) and the Federal Rail Administration (FRA) for smoke emission and flammability as tested under ASTM E-662 and ASTM E-162.

The F-3749-B Antenna is available in custom colors for orders of 150 or more.

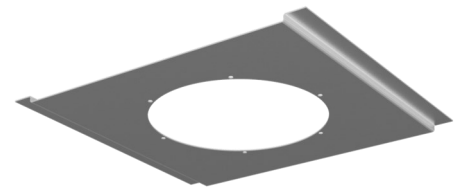


F-3749-B

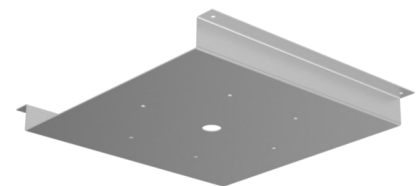
Electrical Specifications	F-3749-B
Frequency Range, MHz	VHF / UHF / 760-960
Nominal Gain	Unity
Bandwidth: 2.0:1 VSWR, MHz	
138-174	8
406-512	64
764-890	126
806-960	154
1800-1990	n/a
2400-3000	n/a
Polarization	Vertical
Pattern	Omnidirectional
Power Rating, Watts Total	50
Nominal Impedance, Ohms	50
Radome	6200 Kydex
Mean Time Between Failure, Hours	87,000
Color	White
Standard Termination	N Female



F-33105 Mounting Bracket 14x14x5.6"



F-33220 Mounting Bracket 14x14"



F-33034 Mounting Bracket 14x14"

Mechanical Specifications	F-3749-B
Length, inch (mm)	9.78 (249)
Diameter, inch (mm)	7.0 (178.5)
Weight, lbs (kg)	4 (1.8)
Required Minimum Ground Plane Size, in (mm)	14 x 14 (357 x 357) Not Included