

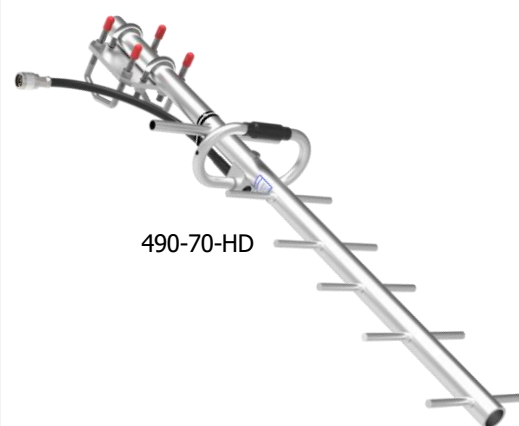


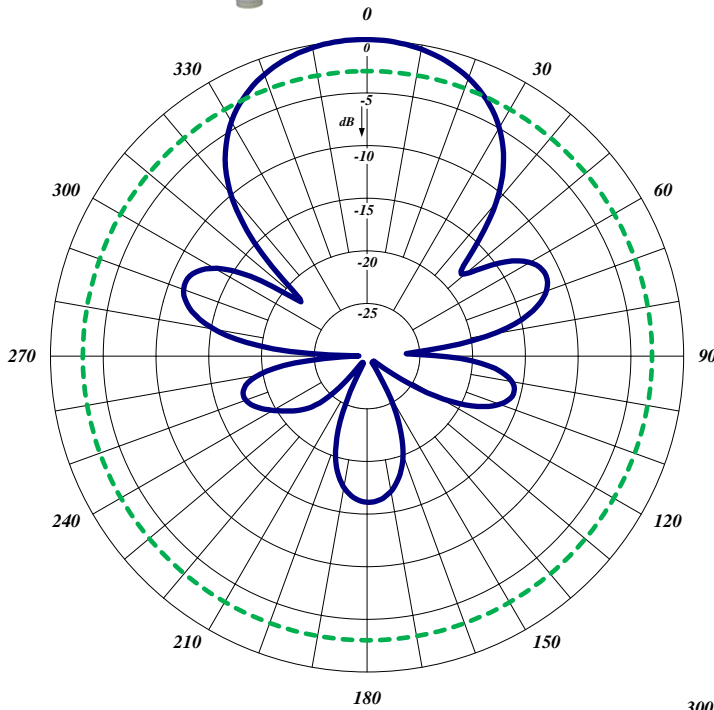
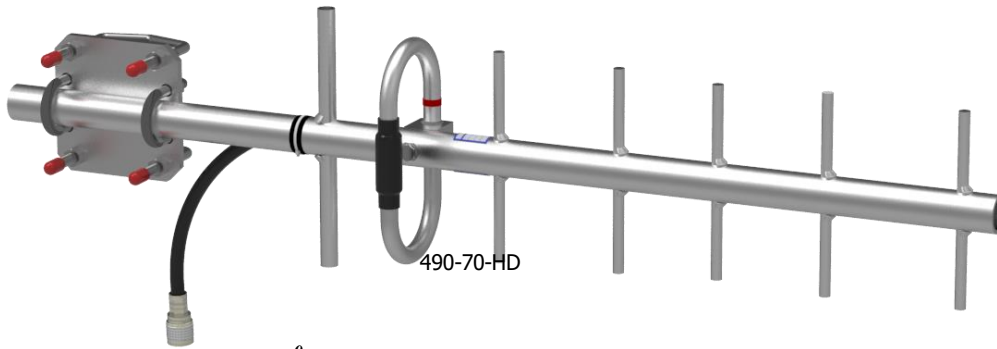
### 490 Heavy-Duty Yagi Antennas Series

The 490 Heavy-duty Yagi Series is an extremely rugged, 7 elements configuration antenna. All our antennas can be completely customized to your particular applications. Our antennas can be black anodized, vertically or horizontally polarized.

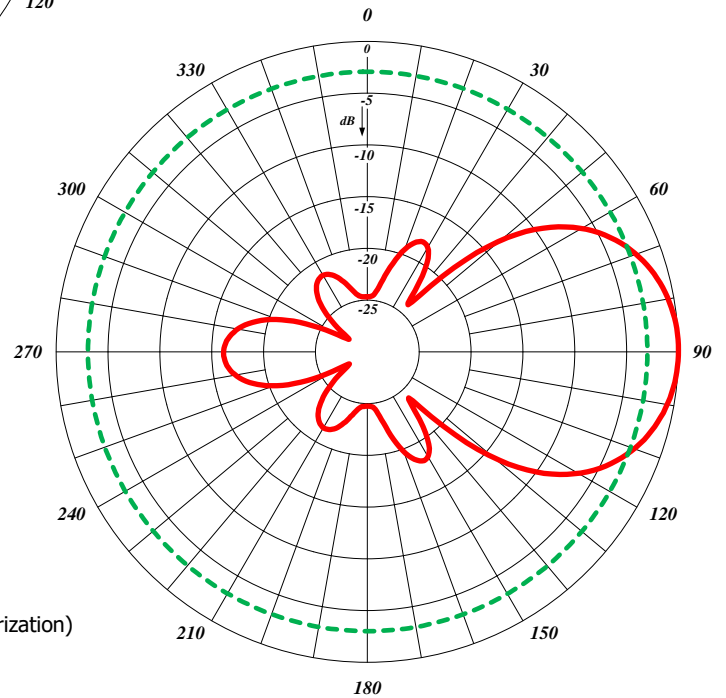
- Each antenna has an extremely rugged design to withstand harsh environmental conditions.
- The mounting hardware supplied will permit either vertical or horizontal polarization.
- The 490 Series Yagi antennas are fully welded.
- DC ground for lightning protection.

| Electrical Specifications                          | 490-70-HD       |
|--|-----------------|
| Frequency Range, MHz (in splits)                   | 806-960         |
| Nominal Gain, dBd                                  | 10.0            |
| Number of Elements                                 | 7               |
| Bandwidth: 1.5:1 VSWR, MHz                         | 85              |
| Polarization                                       | Vert. or Horiz. |
| Horizontal Beamwidth (Horizontal Pol.)             | 56°             |
| Vertical Beamwidth (Horizontal Pol.)               | 42°             |
| Front to Back, dB                                  | 20              |
| Pattern  | Directional     |
| Power Rating, Watts                                | 200             |
| Nominal Impedance, Ohms                            | 50              |
| Standard Termination                               | Type N Male     |
| Mechanical Specifications                          | 490-70-HD       |
| Length, in (mm)                                    | 27 (686)        |
| Width, in (mm)                                     | 8 (203)         |
| Weight, lbs. (kg)                                  | 2.5 (1.1)       |
| Rated Wind Velocity, No Ice, mph (km/h)            | 150 (241)       |
| Rated Wind Velocity, 0.5" (13mm) ice, mph (km/h)   | 150 (241)       |
| Lateral Thrust @ 100 mph, wind, lbs. (kg)          | 38 (17)         |
| Bending Moment @ top clamp: 100 mph, ft.*lb (kg*m) | 13 (1.8)        |
| Projected Area, ft <sup>2</sup> (m <sup>2</sup> )  | 0.4 (0.04)      |
| Mounting Hardware Included                         | 127-85          |





490-70, Horizontal Pattern (Vertical Polarization)



490-70, Vertical Pattern (Vertical Polarization)