



796-70-P Low PIM Enclosed Dipole

The 796-70-P Low PIM dual 2 enclosed dipole array antenna is designed to offer a PIM rate of -150dBc with two carriers of 43 dBm each. All our Low PIM antenna are measured individually in Low PIM anechoic chamber. Weatherproof radome to ensure continuous service during severe environmental conditions.

- Each antenna is offered in an offset pattern, 1/4 or 1/2 wave versions.
- Versions with 3, 6, and 9-degree downtilt are also available.
- Mounting hardware included (see picture below)

Ordering information:

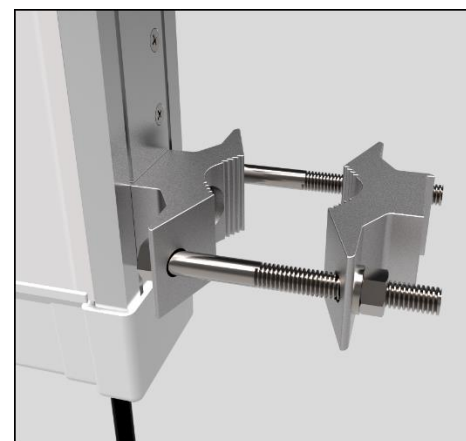
796-70-P-1/2 Low PIM Enclosed Dipole 746-960 MHz, 1/2 wave

796-70-P-1/4 Low PIM Enclosed Dipole 746-960 MHz, 1/4 wave

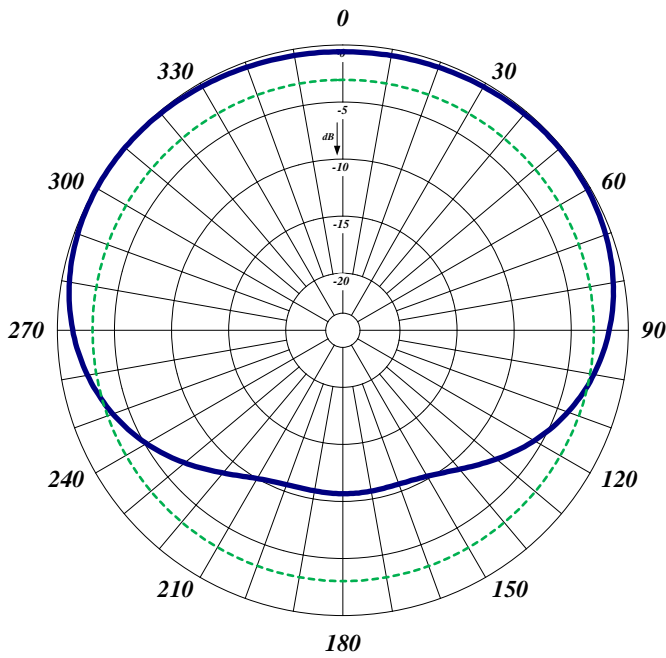
Electrical Specifications	796-70-P
Frequency Range, MHz (in splits)	746-960
Nominal Gain, dBd	5
Number of Dipoles	2 x 2
Bandwidth 1.5:1 VSWR, MHz	214
Polarization	Vertical
Pattern	Offset or Bi-directional
Power Rating, Watts	300
PIM (two tones; 43 dBm each), dBc	-150
Nominal Impedance, Ohms	50
Lightning Protection	DC Ground
Standard Termination	7/16 DIN-Male, Mini DIN 4.3/10 available upon request
Mechanical Specifications	796-70-P
Length, in (mm)	44.5 (1130)
Width, in (mm)	2.5 (64)
Weight, lbs. (kg)	14 (6.5)
Rated Wind Velocity, No Ice, mph (km/h)	100 (162)
Rated Wind Velocity, 0.5" (13mm) ice, mph	85 (137)
Lateral Thrust @ 100 mph, wind, lbs. (kg)	73 (33)
Projected Area, ft ² (m ²)	2.7 (0.25)
Mounting Information	1.5-2.88" O.D.



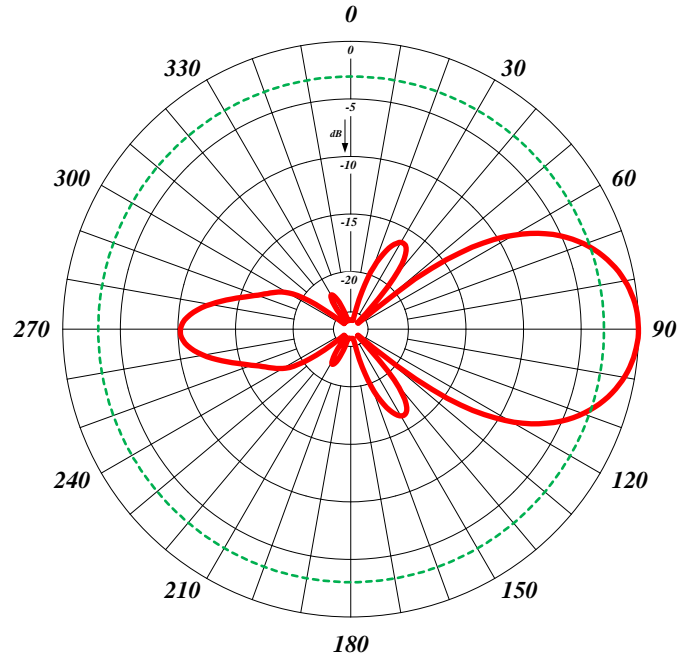
796-70-P



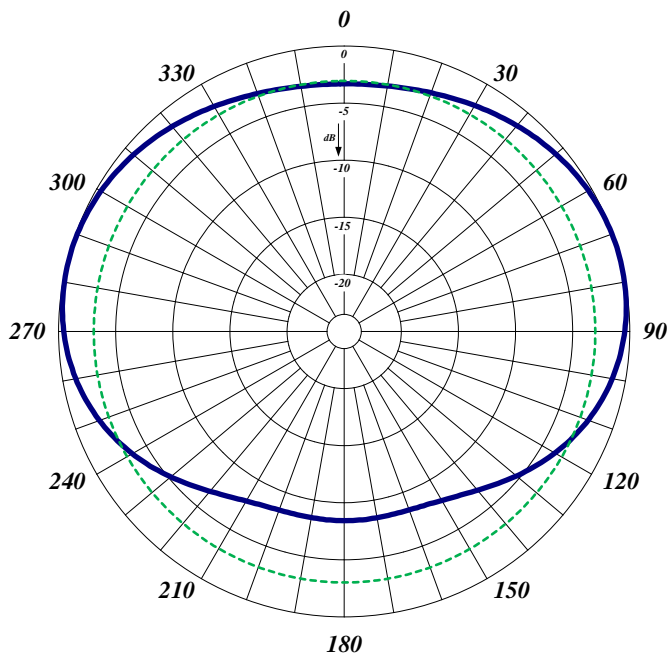
Clamps included



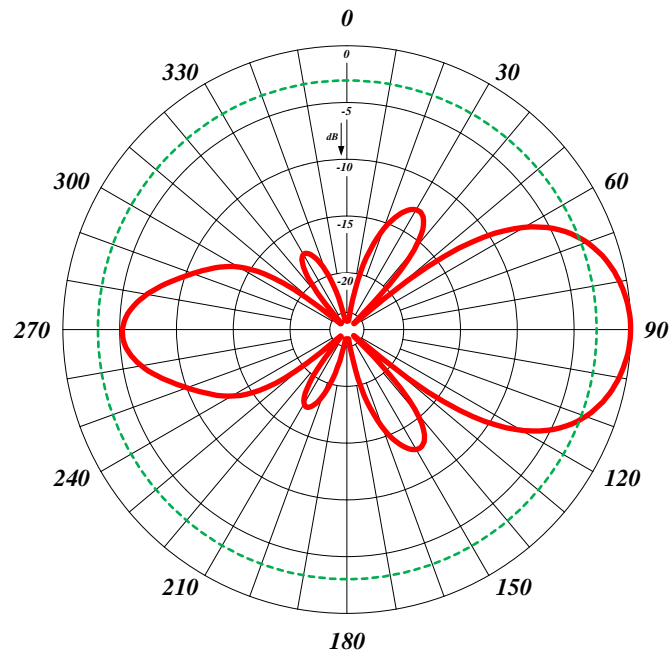
1/4 wave Spacing Horizontal



1/4 wave Spacing Vertical



1/2 wave Spacing Horizontal



1/2 wave Spacing Vertical