



290 Series 220MHz Yagi Antennas

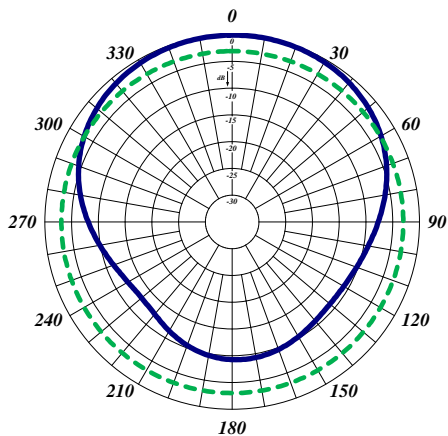
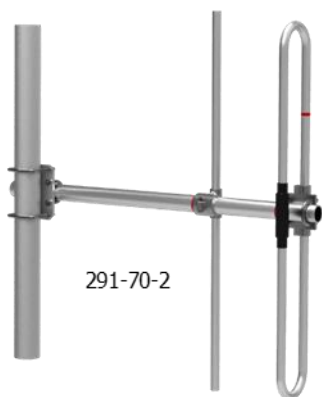
The 290 Series 220MHz Yagi Antennas are available in 2, 3, and 6 element configurations. All our antennas can be completely customized to your particular applications. Our antennas can be black anodized, vertically or horizontally polarized, and heavy-duty versions are available. By default, our Yagi antennas are end mounted. But a center mount or an extended boom are also available for certain models.

- Each antenna has a rugged design to withstand harsh environmental conditions.
- The mounting hardware supplied will permit either vertical or horizontal polarization.
- Heavy-duty versions are available. Please contact our Technical Support team for consultation.

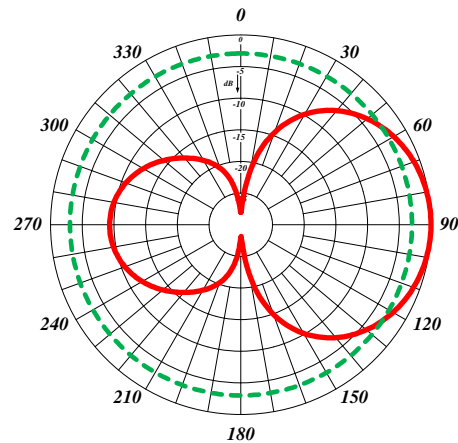


290-70-2HDWB

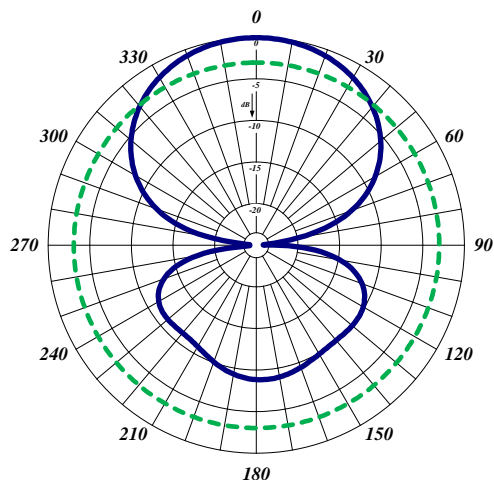
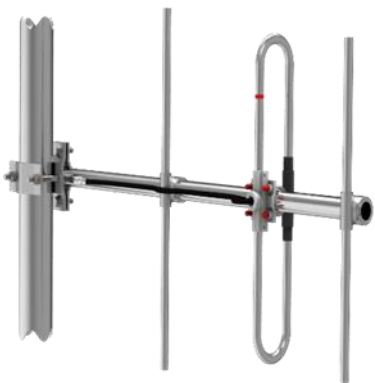
Electrical Specifications	291-70-2	295-70-2	290-70-2
	215-225	215-225	215-225
Nominal Gain, dBd	3.5	6.5	9.5
Number of Elements	2	3	6
Bandwidth 1.5:1 VSWR, MHz (Center Freq. %)	10	10	10
Polarization	Vertical or Horizontal		
Horizontal Beamwidth (Horizontal Pol.)	140°	90°	62°
Vertical Beamwidth (Horizontal Pol.)	70°	36°	50°
Front to Back, dB	15	12	17
Pattern	Directional		
Power Rating, Watts	350	350	350
Nominal Impedance, Ohms	50	50	50
Lightning Protection	DC Ground		
Standard Termination	Type N Male		
Mechanical Specifications	291-70-2	295-70-2	290-70-2
Length, in (mm)	32 (813)	48 (1219)	84 (2134)
Width, in (mm)	29 (737)	28 (711)	27 (686)
Weight, lbs. (kg)	3.7 (1.7)	4.8 (2.2)	9.0 (4.1)
Rated Wind Velocity, No Ice, mph (km/h)	165 (266)	155 (249)	145 (233)
Rated Wind Velocity, 0.5" (13mm) ice, mph (km/h)	145 (233)	130 (209)	100 (161)
Lateral Thrust @ 100 mph, wind, lbs. (kg)	19.4 (8.8)	27 (12)	47 (21.3)
Torsional Moment @ 100 mph, ft.*lb (kg*m)	25 (3.5)	52 (7.2)	138 (19)
Projected Area, ft ² (m ²)	0.7 (0.07)	1.0 (0.09)	1.75 (0.16)
Mounting Hardware Included	181-85 Clamp	181-85 Clamp	115R-85 Clamp



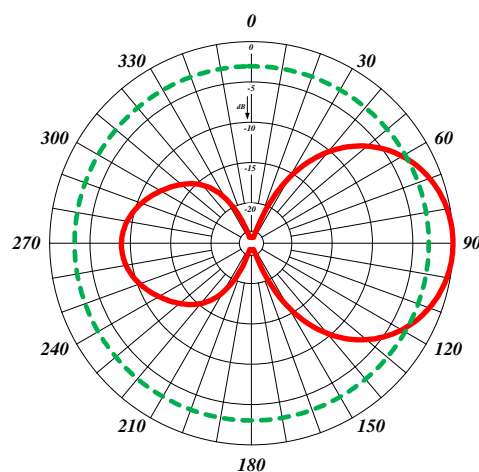
291-70-2 Horizontal Pattern (Vertical Polarization)



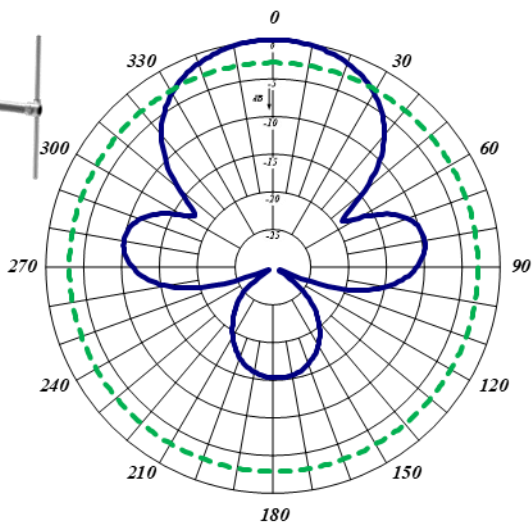
291-70-2 Vertical Pattern (Vertical Polarization)



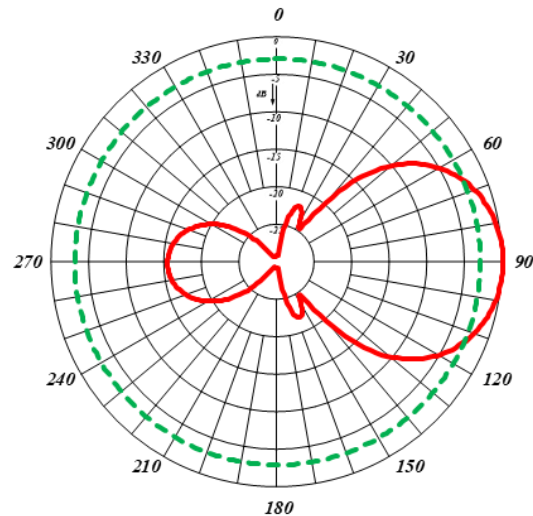
295-70-2 Horizontal Pattern (Vertical Polarization)



295-70-2 Vertical Pattern (Vertical Polarization)



290-70-2 Horizontal Pattern (Vertical Polarization)



290-70-2 Vertical Pattern (Vertical Polarization)