



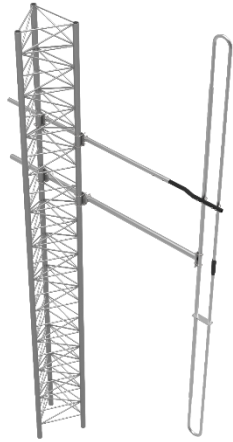
### 530 Series Low Band Exposed Dipole Antenna

The Low Band Exposed Dipole Antenna Series are available in our standard or heavy-duty construction. These exposed dipole antennas come in both single and dual configurations, depending on the gain required. They are constructed from high strength, corrosion resistant aluminum alloy, hot galvanized steel mounting hardware, and use unique PVC off-set support arms. Our heavy-duty versions have dual support braces and use a superior anti-torque support. All components are oversized.

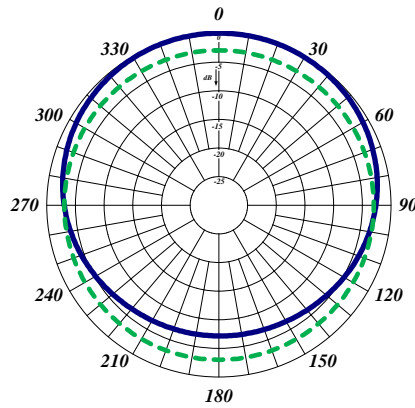
- Each antenna has a rugged design to withstand the most extreme environmental conditions.
- Supplied with anti-torque supports. DC ground for lightning protection.
- Can be black anodized coating for enhanced anti-corrosion and de-icing properties.

	531-70	531-70-HD	532-70	532-70-HD
Frequency Range, MHz (in splits)	30-76	30-76	30-76	30-76
Nominal Gain, dBd	2.5	2.5	5.5	5.5
Bandwidth 1.5:1 VSWR, MHz	7%	7%	7%	7%
Polarization	Vertical			
Pattern	Offset			
Power Rating, Watts	300	300	300	300
Nominal Impedance, Ohms	50	50	50	50
Lightning Protection	DC Ground			
Standard Termination	Type N Male			

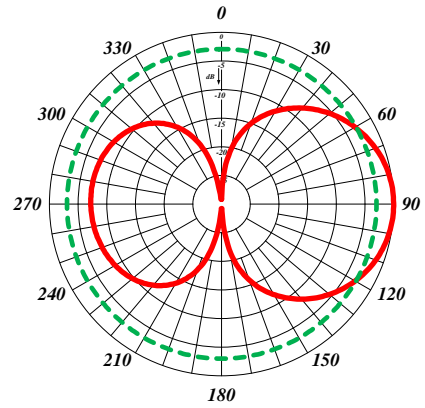
Mechanical Specifications	531-70	531-70-HD	532-70	532-70-HD
Length @ 30 MHz, in (mm)	189 (4800)	189 (4800)	472 (11989)	472 (11989)
Width, in (mm)	87 (2210)	87 (2210)	87 (2210)	87 (2210)
Weight, lbs. (kg)	37 (17)	43 (19.5)	79 (36)	91 (41)
Rated Wind Velocity, No Ice, mph	143 (230)	200 (322)	143 (230)	200 (322)
Rated Wind Velocity, 0.5" (13mm) ice, mph (km/h)	98 (158)	160 (258)	98 (158)	160 (258)
Lateral Thrust @ 100 mph, wind, lbs. (kg)	133 (60.8)	160 (72.3)	266 (121.6)	320 (144.6)
Projected Area, ft <sup>2</sup> (m <sup>2</sup> )	4.98 (0.46)	5.94 (0.55)	9.96 (0.92)	11.88 (1.10)
Mounting Information Mast O.D., mm (number of clamps needed)	1.25"-2.38" (4)	1.25"-2.38" (6)	1.25"-2.38" (8)	1.25"-2.38" (12)



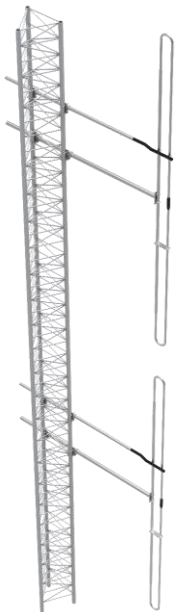
531-70



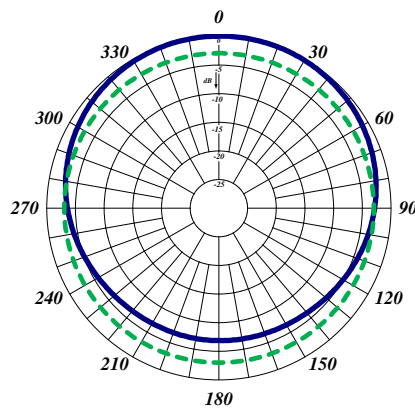
Horizontal Pattern



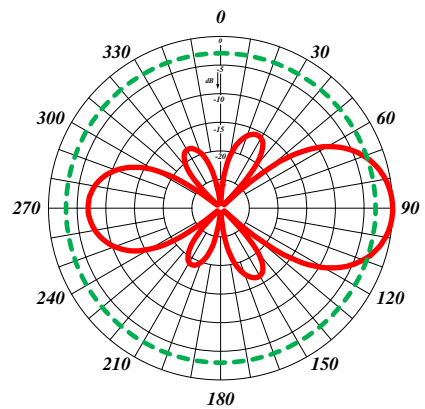
Vertical Pattern



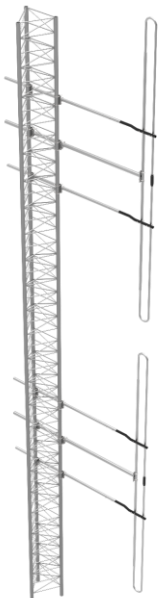
532-70



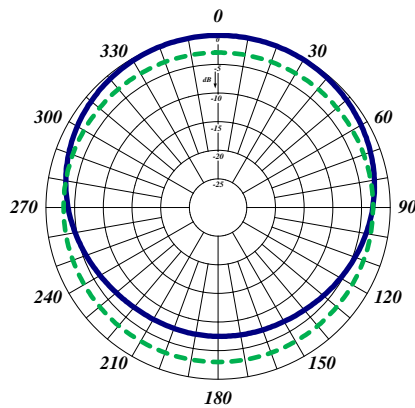
Horizontal Pattern



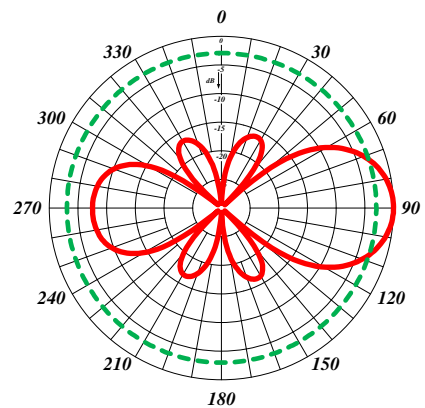
Vertical Pattern



532-70-HD



Horizontal Pattern



Vertical Pattern