



### 880 Series VHF Exposed Dipole Array

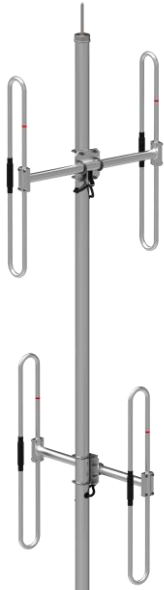
The 880 Series VHF Exposed Dipole Array are available in 2 and 4 dipoles set configurations. All our antennas can be completely customized to your particular applications. Our antennas can be black anodized, top mount only, and heavy-duty versions are available.

- This antenna is field adjustable for omni or bidirectional.
- These antennas have only internal cabling, fixed dipole-mast spacing, and adjustable pattern control.
- Heavy-duty versions are available. Please contact our Technical Support team for consultation.
- This antenna is available in Low-PIM (-150 dBc; two 20W carriers).

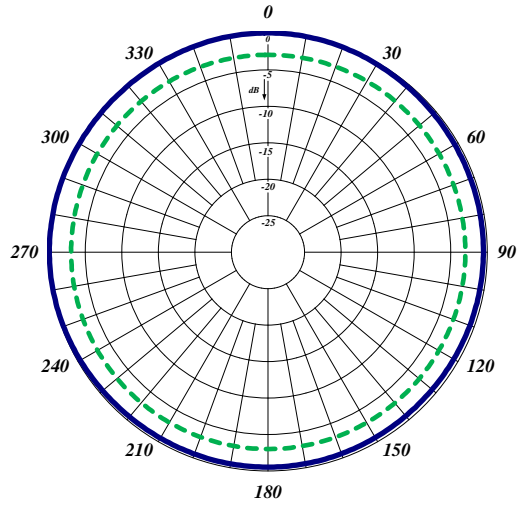
Electrical Specifications	882-70	884-70
Frequency Range, MHz	138-174	138-174
Nominal Gain, dBd	3.0-5.5	6.0-8.5
Number of Dipoles	2 Sets	4 Sets
Bandwidth 1.5:1 VSWR, MHz	36	36
Polarization	Vertical	
Pattern	Omni or Bi-Directional	
Power Rating, Watts	450	500
Nominal Impedance, Ohms	50	50
Lightning Protection	DC Ground	
Standard Termination	Type N Male for standard version – DIN 7/16 or 4.3/10 for Low-PIM version	
Mechanical Specifications	882-70	884-70
Length, in (mm)	138 (3500)	246 (6248)
Width, in (mm)	30 (762)	31 (787)
Weight, lbs. (kg)	36 (16.3)	78 (35)
Rated Wind Velocity, No Ice, mph (km/h)	120 (162)	110 (177)
Rated Wind Velocity, 0.5" (13mm) ice, mph (km/h)	95 (137)	80 (129)
Lateral Thrust @ 100 mph, wind, lbs. (kg)	113 (51)	236 (107)
Bending Moment @ top clamp: 100 mph, ft.*lb (kg*m)	351(49)	1264 (175)
Projected Area, ft <sup>2</sup> (m <sup>2</sup> )	4.1 (0.38)	8.7 (0.81)
Mounting Information: Mast O.D. (mm)	2.4" (61)	2.9" (73)



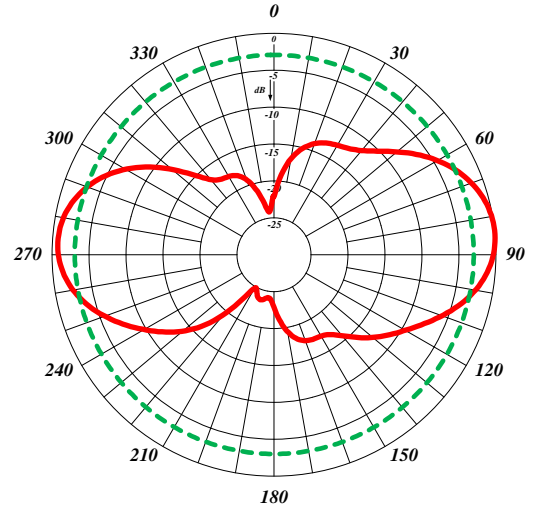
884-70  
Bidirectional



882-70 Omni



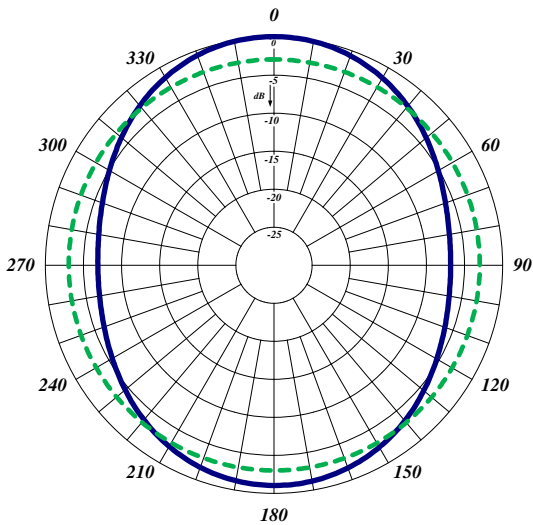
Omni Horizontal



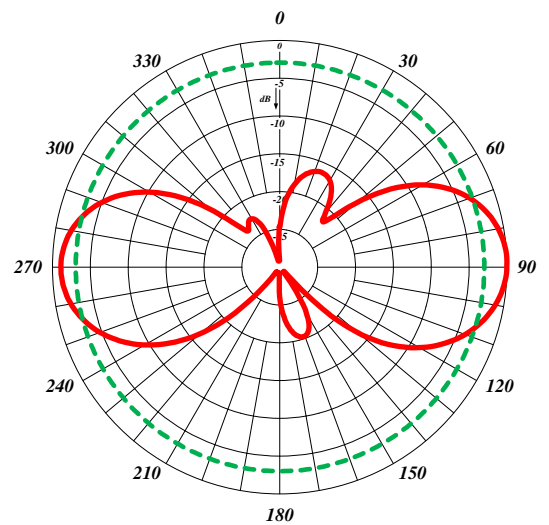
Omni Vertical



882-70 Bi



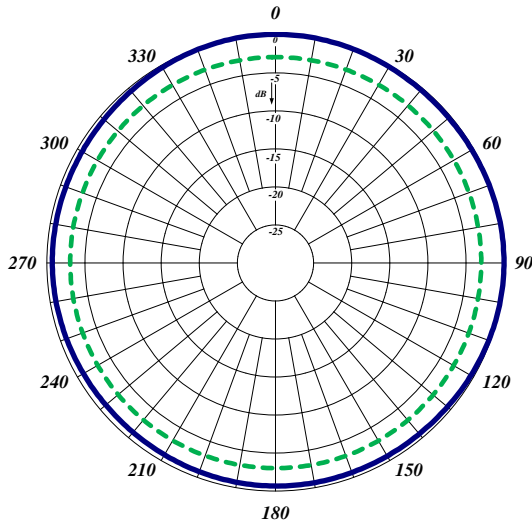
Bidirectional Horizontal



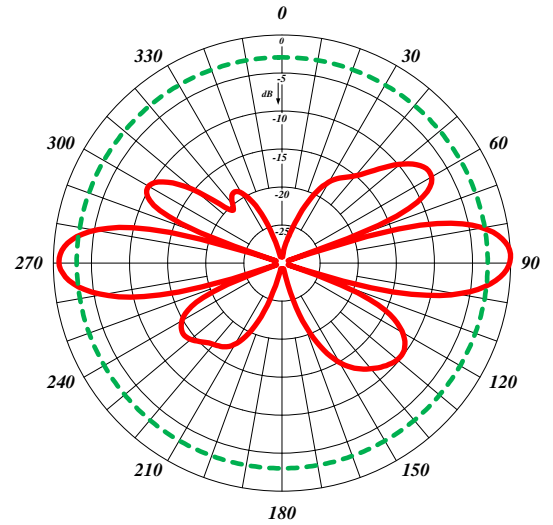
Bidirectional Vertical



884-70-Omni



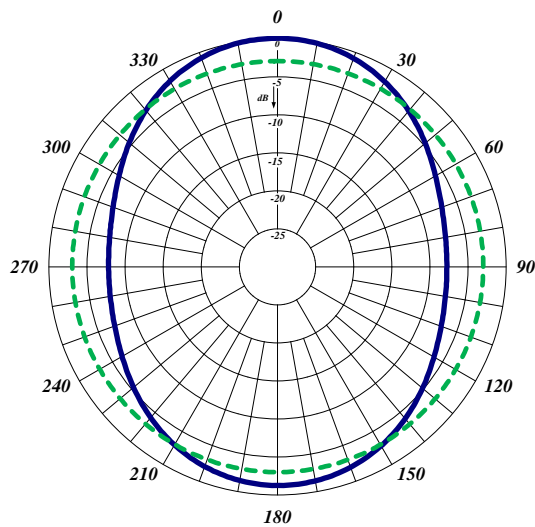
Omni Horizontal



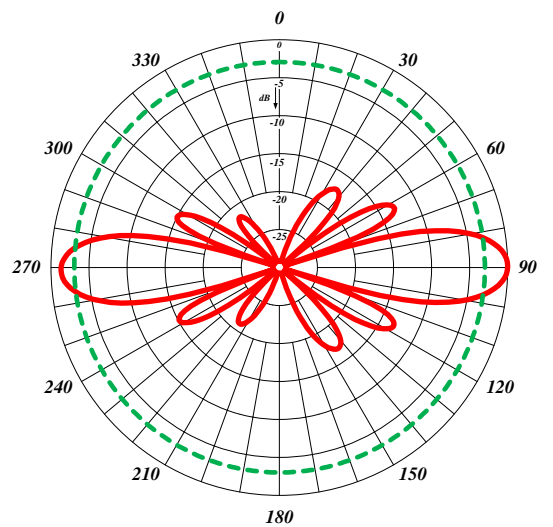
Omni Vertical



884-70-Bi



Bidirectional Horizontal



Bidirectional Vertical