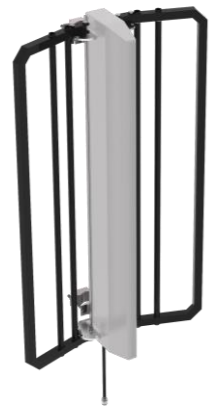


### Enclosed Dipoles with Black Anodized Reflector

The Enclosed Dipoles with Black Anodized Reflector are available in 2-, 4-, or 8- dipole configurations. These antennas can be adjusted from 60° to 160°. All our antennas can be completely customized to your particular applications.

- These antennas have 1/4 wave spacing to the reflector.
- Broadband antennas are ideal for trunking or cellular applications.
- Reflector is field adjustable and has 6 positions: 60°, 75°, 90°, 105°, 130° and 160°.
- Weatherproof radome to ensure continuous service during severe environmental conditions.
- Heavy-duty versions are available. Please, contact our Technical Support team for consultation.

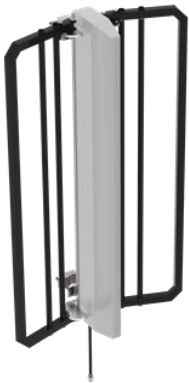
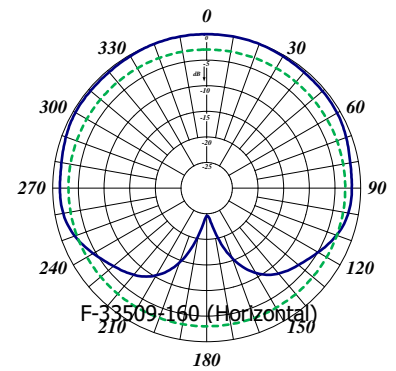
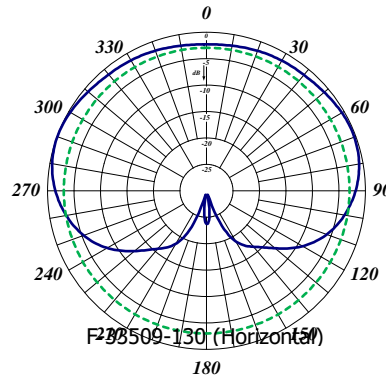
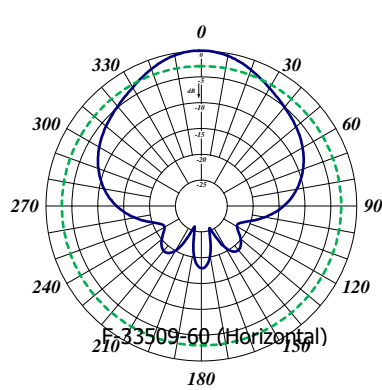
Electrical Specifications	F-33509	F-33510	F-33511
Frequency Range, MHz	746-960	746-960	746-960
Nominal Gain (@ 60deg position), dBd	Up to 10.5	Up to 13.5	Up to 16.5
Number of Dipoles	2	4	8
Bandwidth 1.5:1 VSWR, MHz	150	150	150
Polarization	Vertical	Vertical	Vertical
Pattern	Directional	Directional	Directional
Power Rating, Watts	150	300	500
Nominal Impedance, Ohms	50	50	50
Lightning Protection	DC Ground	DC Ground	DC Ground
Standard Termination	Type N Male	Type N Male	Type N Male
Mechanical Specifications	F-33509	F-33510	F-33511
Length, in (mm)	22 (559)	44.5 (1130)	94.5 (2395)
Width (1/4 Wave Spacing), in (mm)	25 (635)	25 (635)	25 (635)
Weight, lbs. (kg)	16.5 (7.5)	24 (10.9)	42 (19)
Rated Wind Velocity, No Ice, mph (km/h)	100 (162)	100 (162)	100 (162)
Rated Wind Velocity, 0.5" (13mm) ice, mph (km/h)	85 (137)	85 (137)	85 (137)
Lateral Thrust @ 100 mph, wind, lbs. (kg)	57(26)	115 (52)	243 (110)
Projected Area, ft <sup>2</sup> (m <sup>2</sup> )	2.0 (0.19)	4.3 (0.40)	9 (0.84)
Mounting Information	1.5-2.88" O.D.  Clamps included	1.5-2.88" O.D.  Clamps included	1.5-2.88" O.D.  Clamps included



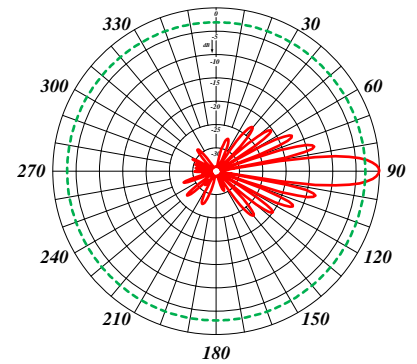
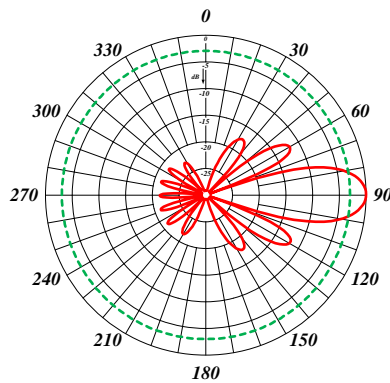
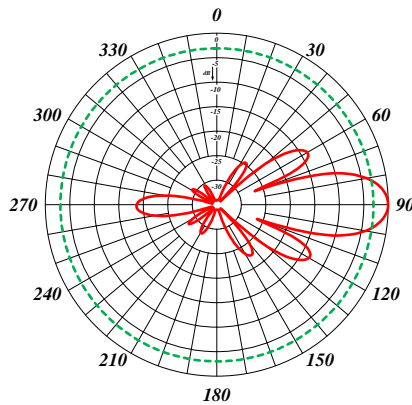
F-33510



F-33509



F-33510



F-33511

