

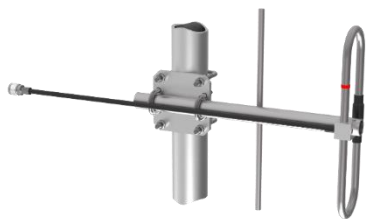


UHF Yagi Antennas Series

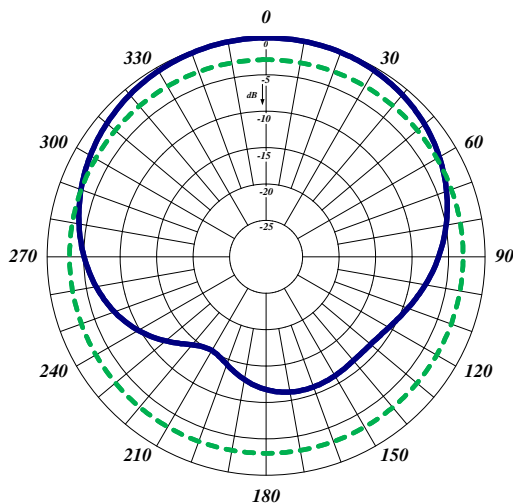
The UHF Yagi Antenna Series is available in 2, 3, 7 and 12 elements and our 70 MHz wideband configurations. By default, our Yagi antennas are end mounted. But a center mount or an extended boom are also available for certain models. All our antennas can be completely customized to your specific applications.

- Each antenna has a rugged, fully welded design to withstand harsh environmental conditions.
- Our antennas can be black anodized, and heavy-duty versions are available.
- The mounting hardware supplied allows either vertical or horizontal polarization.
- Please contact our Technical Support team for consultation.

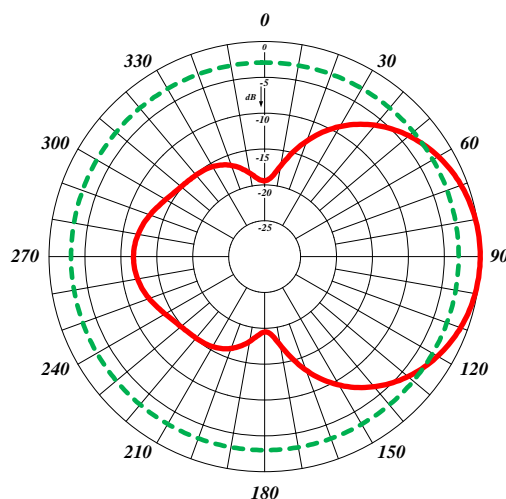
Electrical Specifications	F-3872	433-70	430-70	480-70	437-70
Frequency Range, MHz (in splits)	406-470	406-470	380-512	406-512	450-512
Nominal Gain, dBd	3.5	6.5	10.0	10.0	12.0
Number of Elements	2	3	7	7	12
Bandwidth 1.5:1 VSWR, MHz (Center Freq. %)	24	24	24	64	62
Polarization	Vertical or Horizontal				
Horizontal Beamwidth (Vert. Pol.)	138°	83°	62°	62°	36°
Vertical Beamwidth (Vert. Pol.)	72°	59°	48°	50°	32°
Front to Back, dB	10	12	20	17	20
Pattern	Directional				
Power Rating, Watts	350	350	350	350	350
Nominal Impedance, Ohms	50	50	50	50	50
Lightning Protection	DC Ground				
Standard Termination	Type N Male				
Mechanical Specifications	F-3872	433-70	430-70	480-70	437-70
Length, in (mm)	28 (711)	23 (584)	45 (1143)	45 (1143)	73 (1855)
Width, in (mm)	14.5 (368)	14 (355)	14.5 (368)	14.4 (366)	14.5 (368)
Weight, lbs. (kg)	2.8 (1.3)	2.9 (1.3)	3.9 (1.8)	3.9 (1.8)	5.5 (2.5)
Rated Wind Velocity, No Ice, mph (km/h)	160 (257)	160 (257)	150 (241)	150 (241)	150 (241)
Rated Wind Velocity, 0.5" (13mm) ice, mph (km/h)	120 (193)	120 (193)	110 (177)	110 (177)	110 (177)
Lateral Thrust @ 100 mph, wind, lbs. (kg)	9 (4.1)	8.7 (4.0)	16 (7.3)	15 (6.8)	25.8 (11.7)
Projected Area, ft ² (m ²)	0.34 (0.03)	0.32 (0.03)	0.61 (0.06)	0.55 (0.05)	0.96 (0.089)
Mounting Hardware Included	127-85 Clamp				



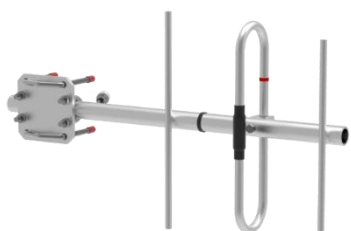
F-3872



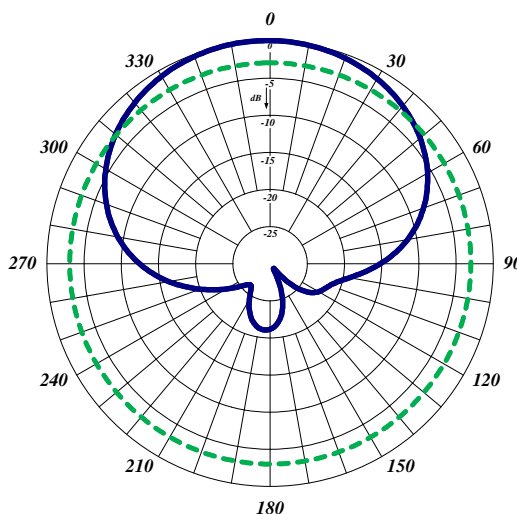
F-3872, Horizontal Pattern (Vertical Polarization)



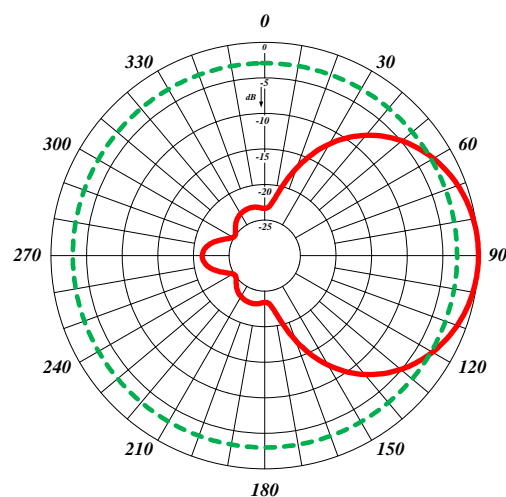
F-3872, Vertical Pattern (Vertical Polarization)



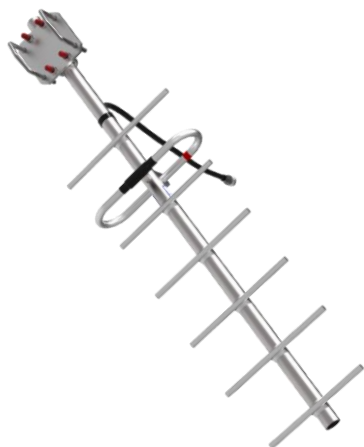
433-70



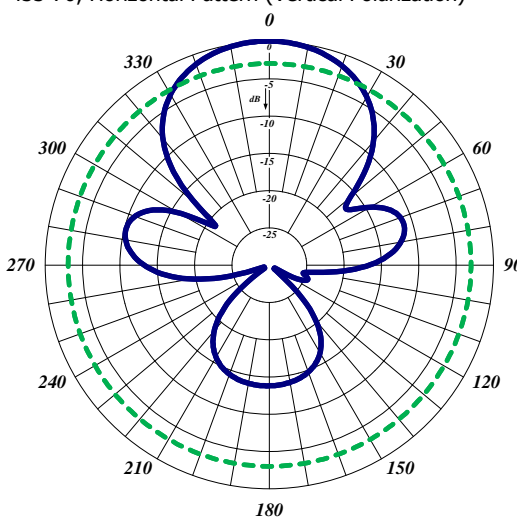
433-70, Horizontal Pattern (Vertical Polarization)



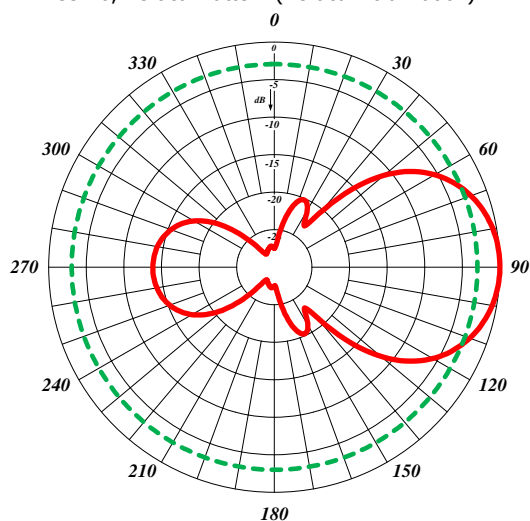
433-70, Vertical Pattern (Vertical Polarization)



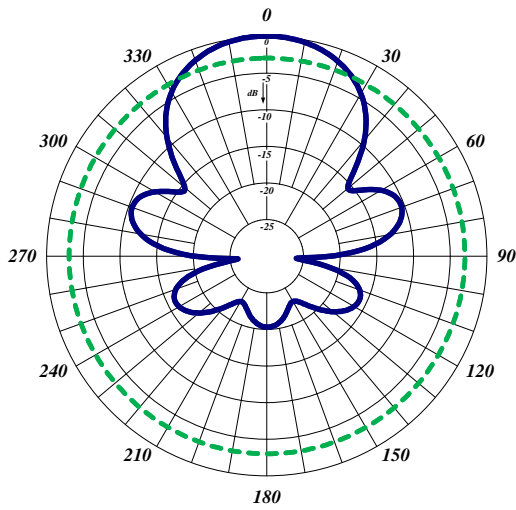
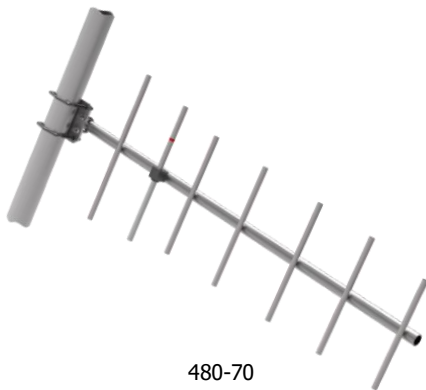
430-70



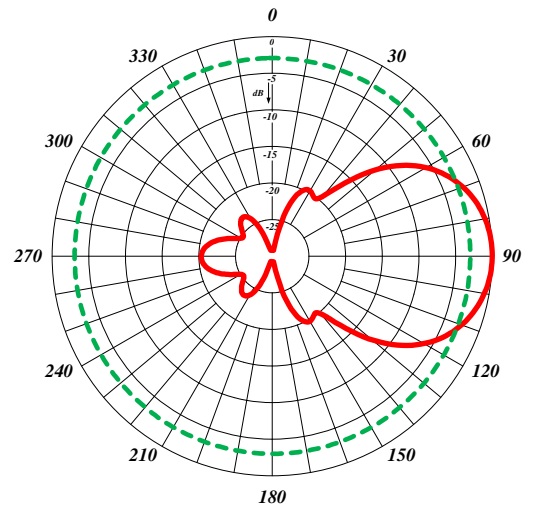
430-70, Horizontal Pattern (Vertical Polarization)



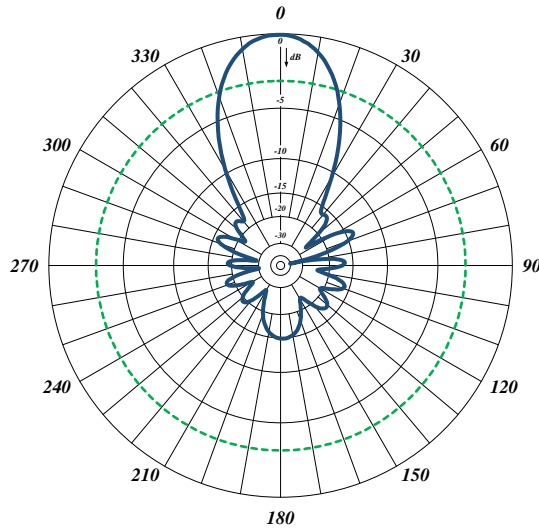
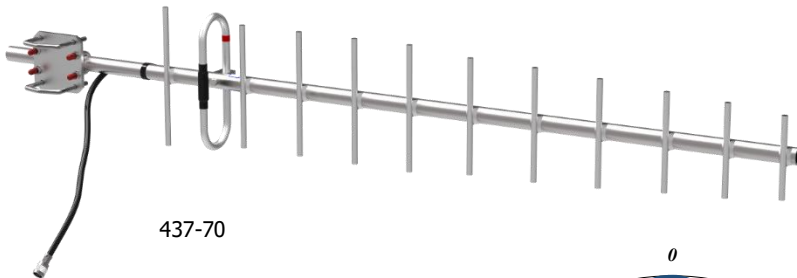
430-70, Vertical Pattern (Vertical Polarization)



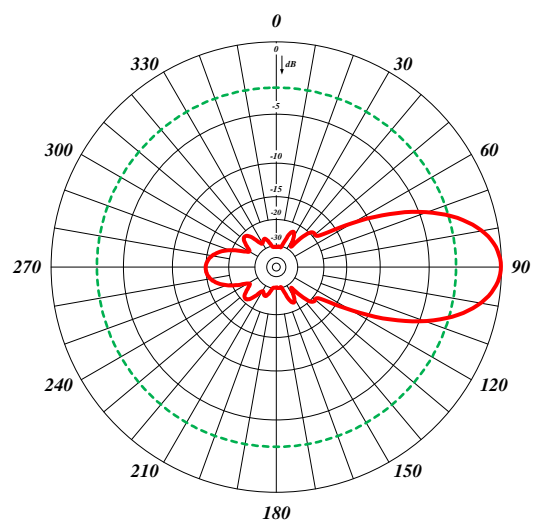
480-70, Horizontal Pattern (Vertical Polarization)



480-70, Vertical Pattern (Vertical Polarization)



437-70, Horizontal Pattern (Vertical Polarization)



437-70, Vertical Pattern (Vertical Polarization)