

NO TORSION CLAMPS – Pipe-to-Pipe Clamp for Parallel Mounting

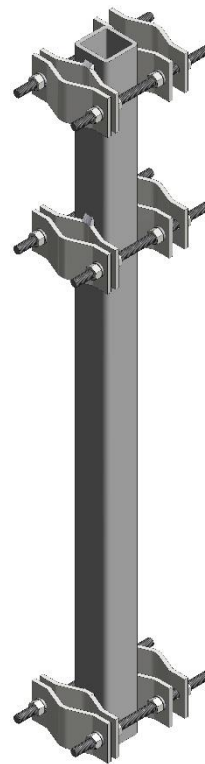
Model	1st Pipe	2nd Pipe	Clamp Material	Height
194-85	1.5" to 3.5" dia.	1.5" to 3.5" dia.	Steel HDG	24"
195-85	1.5" to 3.5" dia.	1.5" to 3.5" dia.	Steel HDG	34"
196-85	1.5" to 3.5" dia.	1.5" to 3.5" dia.	Steel HDG	44"



194-85



195-85



196-85