

PARABOLIC DIRECTIONAL ANTENNA

698-960 MHz



Parabolic Reflector Series Antennas

The Reflector antenna is a SRSP-507 Category A compliant antenna. These antennas have a very high front-to-back ratio. They are broadband and are ideal for point-to-point applications where restrictions on beam width are present. Performance is constant throughout the band. The antenna has a rugged design to withstand harsh environmental conditions. These antennas have ultra-low VSWR ratings and will not exceed 1.5:1 VSWR ratio with 0.5" of radial ice. The 965-70 is a highly-directive parabolic antenna consisting of a back-firing dipole reflector assembly for increased gain and directivity. The mounting hardware supplied will permit either vertical or horizontal polarization. DC ground for lightning protection. Black Anodized and Dipole Radome protected versions are available. This antenna is also available in Low-PIM (-150 dBc; two 20W carriers).

Ordering Information

965-70-HD/HDB/HDBR*1 764-836 MHz

965-70-HD/HDB/HDBR*2 824-896 MHz

965-70-HD/HDB/HDBR*3 896-960 MHz

965-70-HD/HDB/HDBR*4 698-746 MHz

Electrical Specifications	965-70-HD	965-70-HDB	965-70-HDBR
Frequency Range, MHz (in splits)	698-960	698-960	698-960
Nominal Gain, dBd	16.5	16.5	16.5
Bandwidth: 1.5:1 VSWR, MHz	72	72	72
Front to Back, dB	25	25	25
Pattern	Directional		
Power Rating, Watts	200	200	200
Nominal Impedance, Ohms	50	50	50
Lightning Protection	DC Ground		
Standard Termination	Type N Male for standard version – DIN 7/16 or 4.3/10 for Low-PIM version		
Mechanical Specifications	965-70-HD	965-70-HDB	965-70-HDBR
Length, in (mm)	68 (1727)	68 (1727)	68 (1727)
Width, in (mm)	36 (914)	36 (914)	36 (914)
Weight, lbs. (kg)	49 (22.3)	49 (22.3)	51 (23.2)
Rated Wind Velocity, No Ice, mph (km/h)	110 (177)	110 (177)	110 (177)
Rated Wind Velocity, 0.5" (13mm) ice, mph (km/h)	85 (137)	85 (137)	85 (137)
Lateral Thrust @ 100 mph, wind, lbs. (kg)	1.9 (0.46)	1.9 (0.46)	1.9 (0.46)
Projected Area, ft ² (m ²)	4.9 (0.46)	4.9 (0.46)	5 (0.47)
Mounting Hardware Included	112-85 Clamp	112-85 Clamp	112-85 Clamp



965-70-HD



965-70-HDB

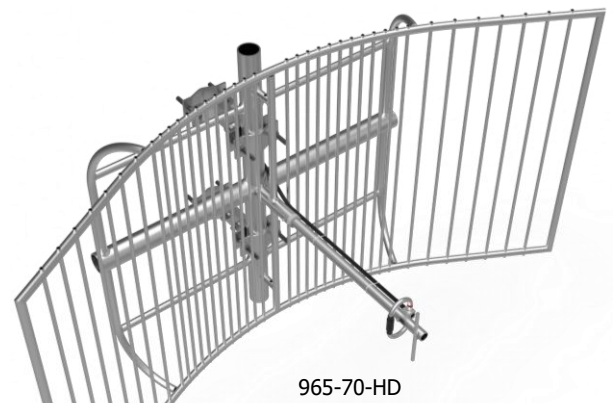


965-70-HDBR



PARABOLIC DIRECTIONAL ANTENNA

764-960 MHz



965-70-HD



965-70-HDB



965-70-HDBR

