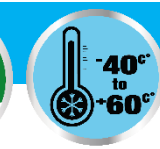


## 290 SERIES VHF Yagi Antennas

138-174 MHz

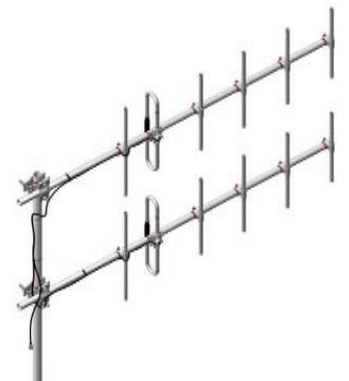


### 290 Series VHF Yagi Antennas

The 290 Yagi Series VHF Yagi Antenna are available in 2, 3, and 6 element configurations. All our antennas can be completely customized to your applications. Our antennas can be black anodized, vertically or horizontally polarized, and heavy duty versions are available.

- Each antenna has a rugged design to withstand harsh environmental conditions.
- The mounting hardware supplied will permit either vertical or horizontal polarization.
- DC Ground for lightning protection.
- Heavy-duty versions are available. Please contact our Technical Support team for consultation.

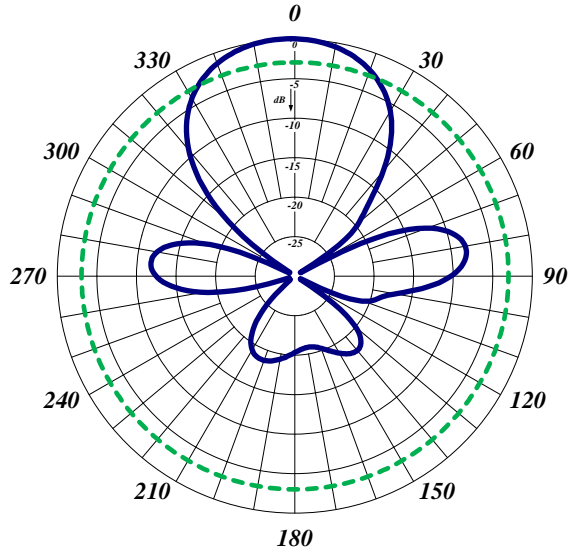
Electrical Specifications	290-70	298-70
Frequency Range, MHz	138-174	138-174
Nominal Gain, dBd	9.5	12.5
Number of Elements	6	Dual 290-70
Bandwidth 1.5:1 VSWR, MHz (Ctr. Freq.%)	4%	4%
Polarization	Vertical	Vertical
Horizontal Beamwidth	48°	45°
Vertical Beamwidth	42°	40 °
Front to Back, dB	20	20
Pattern	Directional	Directional
Power Rating, Watts	350	350
Nominal Impedance, Ohms	50	50
Lightning Protection	DC Ground	DC Ground
Standard Termination	Type N Male	Type N Male
Mechanical Specifications	290-70	298-70
Length, in (mm)	108 (2743)	108 (2743)
Width, (1/2 Wave Spacing) in (mm)	42 (1067)	42 (1067) each
Weight, lbs. (kg)	12.0 (5.4)	24.0 (10.8) both
Rated Wind Velocity, No Ice, mph (km/h)	120 (177)	120 (177)
Rated Wind Velocity, 0.5" (13mm) ice, mph (km/h)	85 (137)	85 (137)
Lateral Thrust @ 100 mph, wind, lbs.(kg)	65 (29)	65 (29) each
Projected Area, ft <sup>2</sup> (m <sup>2</sup> )	2.4 (0.22)	2.4 (0.22) each



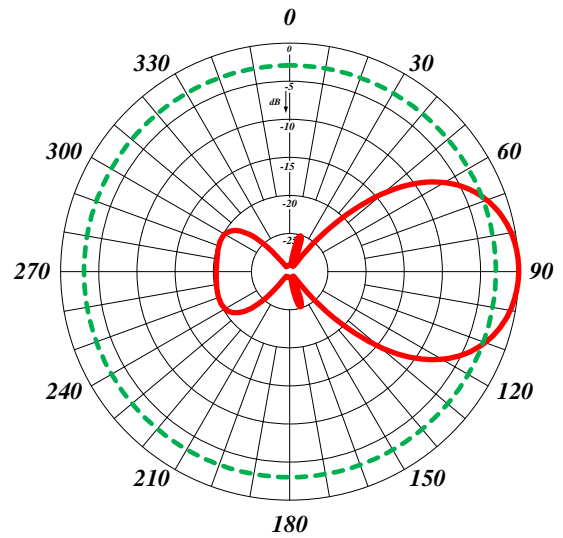
298-70



**290 SERIES VHF Yagi Antennas** **138-174 MHz**



**290-70** Horizontal Pattern, Vertical Polarization



**290-70** Vertical Pattern, Vertical Polarization

Mounting Information	115-85 Clamp	Two 115-85 Clamp
----------------------	--------------	------------------

Order Information	End Mount	End Boom	Center Mount	Heavy Duty	Black Anodized
290-70*SPLITS	290-70	290-70-EB	290-70-CB	290-70-HD	290-70-B
298-70 (Dual 290-70)*SPLITS	298-70	298-70-EB	298-70-CB	298-70-HD	298-70-B

SPLITS : \*1 for 138-143 MHz, \*2 142-148 MHz, \*3 147-153 MHz, \*4 152-158 MHz, \*5 157-163 MHz, \*6 162-168 MHz, \*7 167-174 MHz