

### Dual, Triple, and Quad Feed Exposed Dipole Array

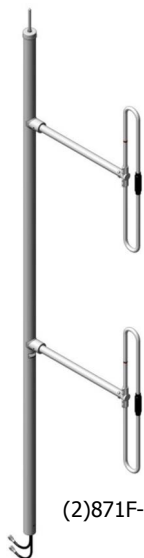
The (2)871F-70, (3)871F-70, and (4)871F-70 are wide band multiple antennas designed for multicoupled systems. The antenna offers a choice of radiation patterns that are determined by the dipole-to-mast spacing.

- These antennas have internal cabling and are not field adjustable.
- Each antenna is offered in a 1/4, 3/8, or 1/2 wave pattern spacing versions.
- Typical antenna to antenna isolation is 30dB, versions with 40 dB of isolation are also available.
- Heavy duty versions are available. Please contact Comprod Inc. Technical support technician for consultation.

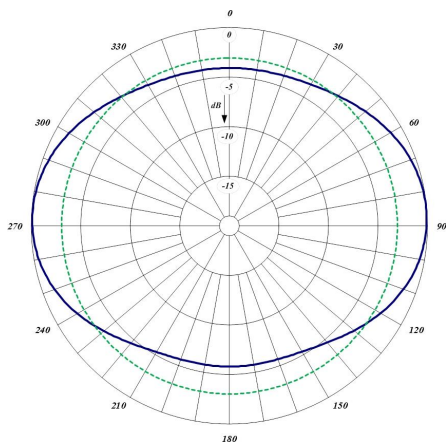


Electrical Specifications	(2)871F-70	(3)871F-70	(4)871F-70
Frequency Range, MHz	138-174	138-174	138-174
Nominal Gain, dBd	2.5	2.5	2.5
Number of Dipoles	2 sets of 1	3 sets of 1	4 sets of 1
Isolation	30 dB	30 dB	30 dB
Bandwidth: 1.5:1 VSWR, MHz	36	36	36
Polarization	Vertical	Vertical	Vertical
Pattern	1/4, 3/8, 1/2	1/4, 3/8, 1/2	1/4, 3/8, 1/2
Power Rating, Watts	200	200	200
Nominal Impedance, Ohms	50	50	50
Lightning Protection	DC Ground	DC Ground	DC Ground
Standard Termination	Dual Type N Male	Three Type N Male	Four Type N Male

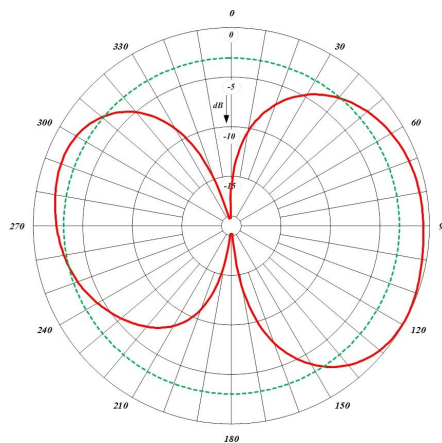
Mechanical Specifications	(2)871F-70	(3)871F-70	(4)871F-70
Length, in (mm)	126 (3200)	181 (4597)	246 (6248)
Width, (1/2 wave spacing) in (mm)	41 (1041)	41 (1041)	42 (1067)
Weight, lbs. (kg)	23 (10.4)	34 (15.4)	65 (28.1)
Rated Wind Velocity: No Ice, mph (km/h)	160 (257)	120 (193)	115 (185)
Rated Wind Velocity: .5" (12mm) Ice, mph (km/h)	120 (193)	95 (153)	90 (145)
Lateral Thrust @ 100mph wind, lbs (N)	84 (374)	124 (552)	186 (827)
Bending Moment @ top clamp: 100mph, lb*ft (kg*m)	287 (389)	615 (835)	1311 (1533)
Projected Area, ft² (m²)	3.1 (.29)	4.6 (.43)	7.0 (.65)
Mounting Information: mast dia. In (mm)	2.38 (60)	2.38 (60)	2.88 (73)
Space Between Clamps: in (mm)	20 (508)	30 (762)	40 (1016)



(2)871F-70



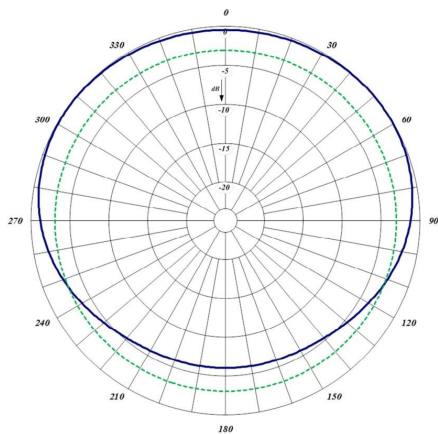
1/2 Wave Horizontal radiation pattern



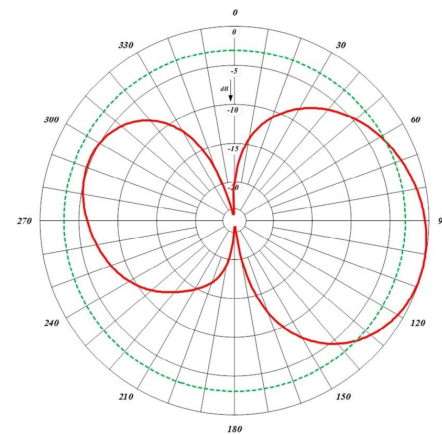
1/2 Wave Vertical radiation pattern



(3)871F-70



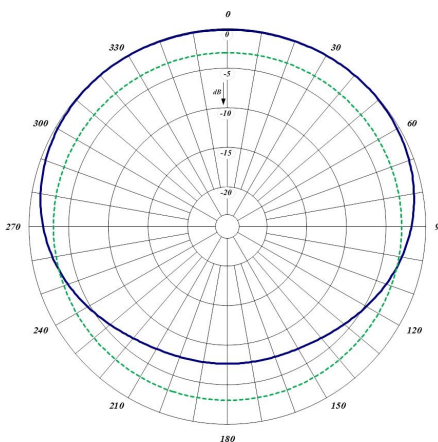
3/8 Wave Horizontal radiation pattern



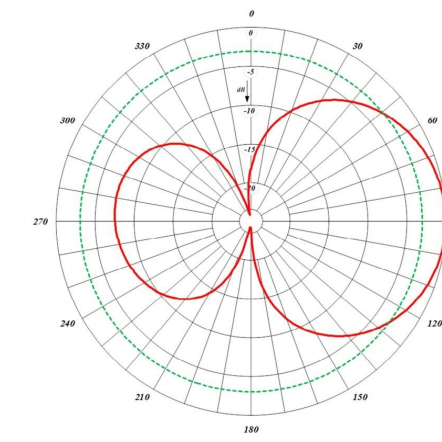
3/8 Wave Vertical radiation pattern



(4)871F-70



1/4 Wave Horizontal radiation pattern



1/4 Wave Vertical radiation pattern