

## BATTERY BACKUP SYSTEM

**PE-48V-480W-55AH-UL:** Battery backup system compatible with our VHF/UHF BDA and any other 48V BDA.

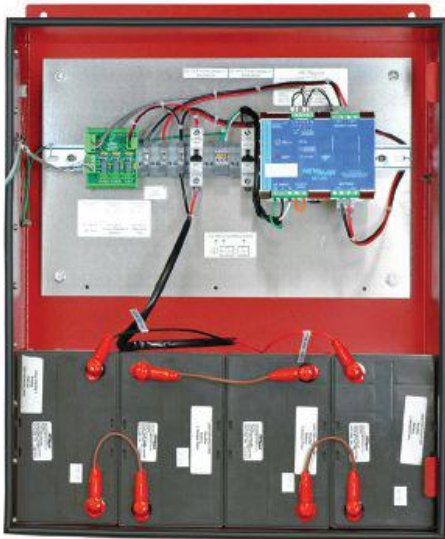
**PE-24V-240W-55AH-UL:** Battery backup compatible with our /700/800/900 MHz BDA and any other 24V BDA.

### Features

- Certified to UL 924
- AC input: 115/230 VAC (factory wired for 120 V AC)
- Input protection: AC breaker
- Load protection: DC breaker
- Typical dimensions (H x W x D): 30" x 23" x 10.5"
- Shipping Weight: 114 lbs for 24V system, 230 lbs for 48 V system
- Batteries Included: maintenance free, valve regulated, sealed lead acid 55 AH capacity
- NFPA compliant Dry Contact Alarms for the following conditions:
  - Charger Failure
  - Battery Discharged to 30 % of capacity.
  - AC Power or Rectifier failure

### Cabinet Type

NEMA-4, UL listed, welded aluminum with IP 65 battery vent and locking door, 4 each 1/2" knock-outs for cable entry on sides and bottom (16 total), IP-68 cable entries. Red powder coat wall mount.



### Disclaimer

- Actual backup time depends on the actual connected load, battery temperature and aging.
- Dimensions, weight, and look could be slightly different please contact our technical service for more information.