

## 775-70-HDWSMP\*1-1/2

380-430 MHz

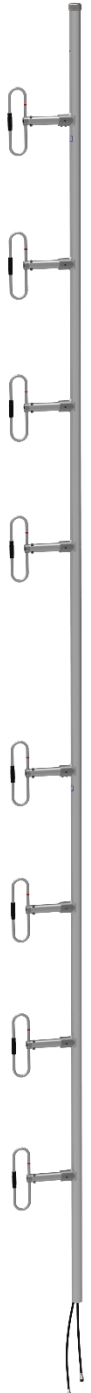
### 775-70-HDWSMP\*1-1/2

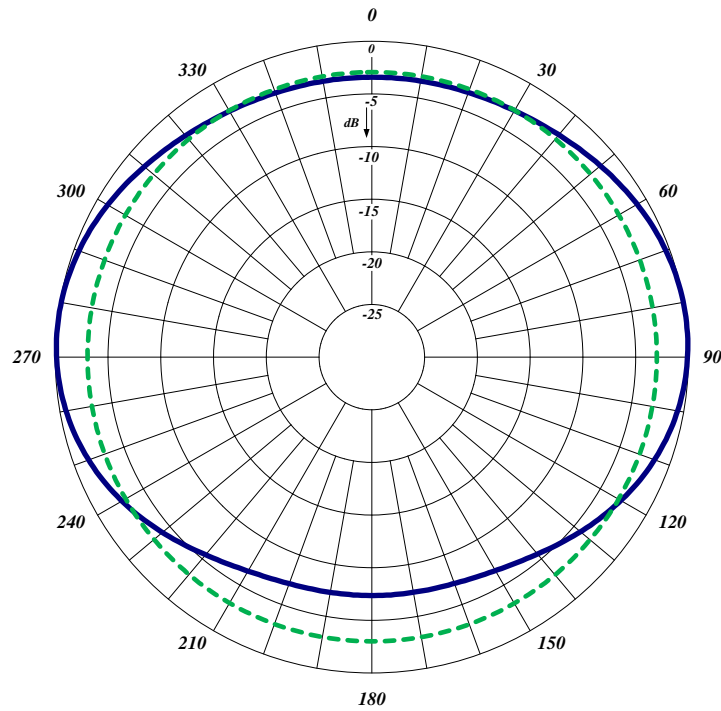


The 775-70-HDWSMP\*1-1/2 is a Wide Band, Low PIM, Heavy Duty, dual antenna designed for multicoupled systems. It is equivalent to a dual 774-70 antennas combined into one mast. All our antennas can be customized to your particular applications. Our antennas can be configured for side mount or top mount. This antenna is configured for side mount. The 775-70-HDWSMP\*1-1/2 antenna has internal cabling and fixed dipole-mast spacing.

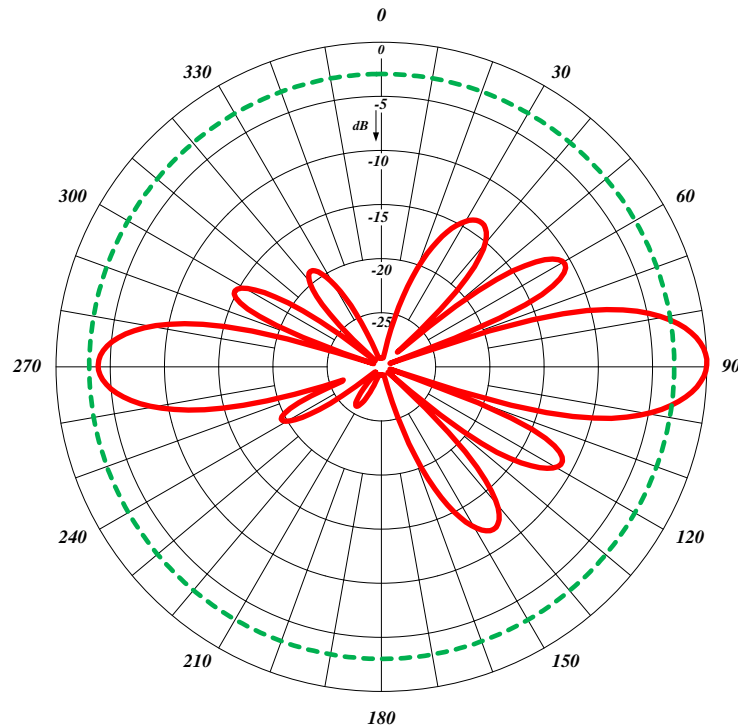
- Low VSWR version with maximum gain over specified frequency.
- This antenna is 1/2 wave length spacing version offering bi-directional radiation pattern.
- Standard connector is 7/16 DIN-Male and optional 4.3-10 is also available.

Electrical Specifications	775-70-HDWSMP*1-1/2
Frequency Range, MHz	380-430
Nominal Gain, dBd	8.0-8.5
Number of Dipoles	2 x 4
Bandwidth 1.5:1 VSWR, MHz	50
Polarization	Vertical
Pattern	Bidirectional
Power Rating, Watts	300
Nominal Impedance, Ohms	50
Isolation, dB	30
Lightning Protection	DC Ground
PIM	150 dBc (2 x 20W carriers)
Mechanical Specifications	775-70-HDWSMP*1-1/2
Length, in (mm)	216 (5487)
Width, in (mm)	16 (406)
Weight, lbs. (kg)	73 (33)
Rated Wind Velocity, No Ice, mph (km/h)	155 (250)
Rated Wind Velocity, 0.5" (13mm) ice, mph (km/h)	120 (193)
Lateral Thrust @ 100 mph, wind, lbs. (N)	173 (766)
Bending Moment @ top clamp: 100 mph, ft*lb (N*m)	911 (1235)
Projected Area, ft <sup>2</sup> (m <sup>2</sup> )	6.5 (0.460)
Mounting Information Mast O.D. (mm)	2.88" (73)





Half-wave Spacing Horizontal



Half-wave Spacing Vertical