

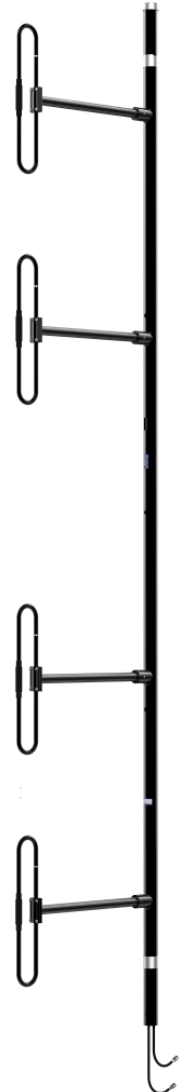
876F-70-2HBSP40DF1/2



The 876F-70-2HBSP40DF1/2 Black Anodized Heavy Duty Dual Exposed Dipole is well suited for multicoupled RF system. It has an extremely rugged design for use in severe environmental conditions. It has internal cabling and a fix dipole-to-mast spacing. This antenna is a special version of the 876F-70 with increased spacing between the two antennas, giving an isolation of 40 dB. It's heavy duty and Low PIM design. Our antennas can be configured for side mount or top mount. This antenna is configured for side mount.

- The 1/2 wave pattern spacing version offer bidirectional pattern with more than 5 dBd Gain at 220 MHz.
- The 1/4 wave and 3/8 wave versions of the antenna are also available.

Electrical Specifications	876F-70-2HBSP40DF1/2
Frequency Range, MHz	215-225
Nominal Gain, dBd	5.0 (5.2 @ 220MHz)
Isolation , dB	40
Bandwidth 1.5:1 VSWR, MHz	1.5:1 (10)
Polarization	Vertical
Pattern	Bidirectional
Power Rating, Watts	300
PIM. (2x20W, 3rd ord.), dBc	150
Nominal Impedance, Ohms	50
Lightning Protection	DC Ground
Temperature Range	-40 to +60 C°
Termination	Dual Feeds Terminating in 7/16 DIN F
Mechanical Specifications	876F-70-2HBSP40DF1/2
Length, in (mm)	240 (6096)
Width (1/2 Wave Spacing), in (mm)	43 (1092)
Weight, lbs. (kg)	130 (59)
Rated Wind Velocity, No Ice, mph (km/h)	140 (225)
Rated Wind Velocity, 1/2" ice, mph (km/h)	105 (169)
Lateral Thrust @ 100 mph, wind, lbs. (N)	222 (988)
Torsional Moment (N•M)	471 (638)
Projected Area, ft ² (m ²)	8.5 (0.78)
Mounting Information Mast O.D. (mm)	2.9 (74)

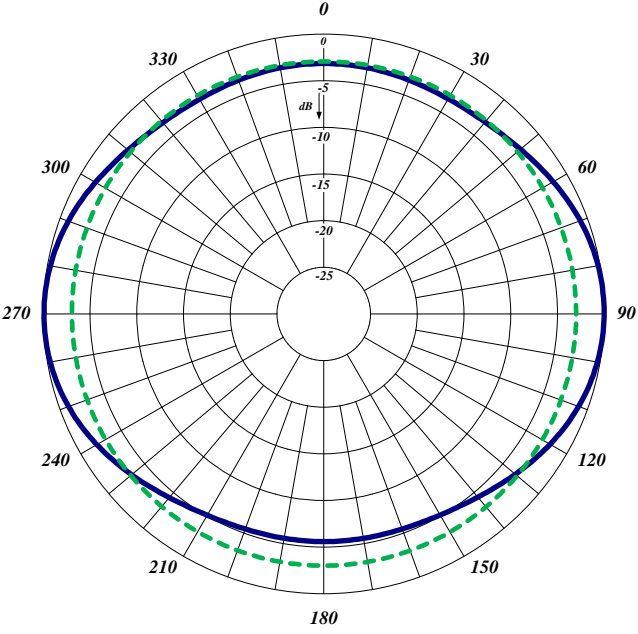
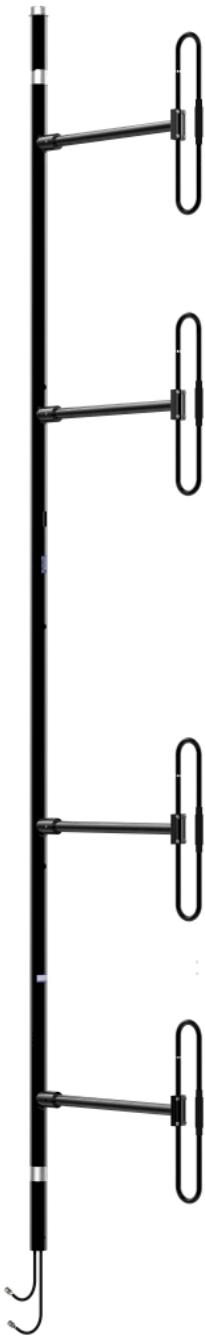


876F-70-2HDSMP40DF1/2

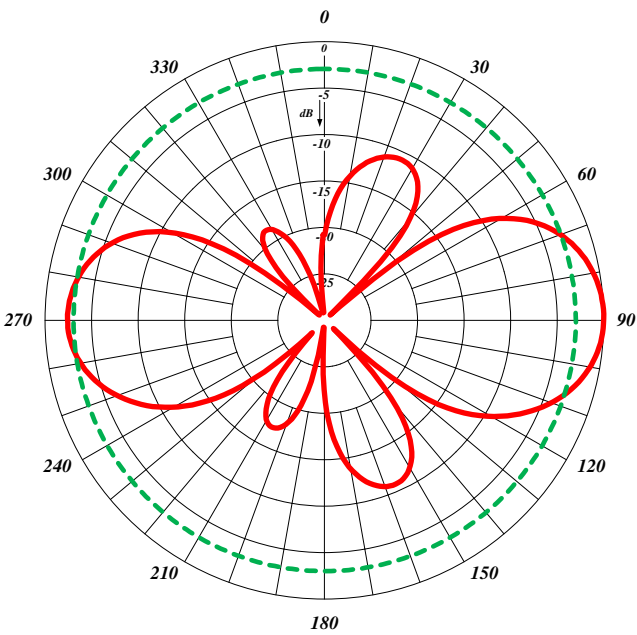


870 SERIES DUAL EXPOSED DIPOLE 215-225 MHz

876F-70-2HBSP40DF1/2



876F-70-2HBSP40DF1/2: Horizontal Radiation pattern



876F-70-2HBSP40DF1/2: Vertical Radiation pattern