

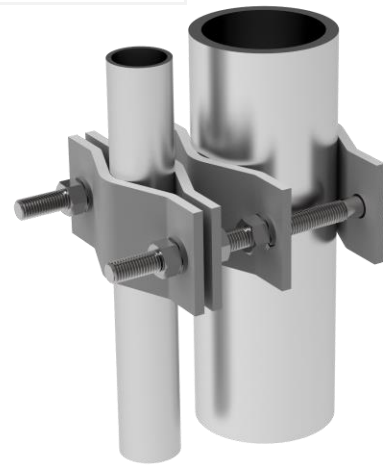
PARALLEL PIPE-TO-PIPE

Model	1st Pipe	2nd Pipe	Clamp Material	Screw Material
107-85	1.5" to 3.5" dia.	1.5" to 3.5" dia.	Steel HDG	Steel HDG
108-85	2.5" to 5" dia.	2.5" to 5" dia.	Steel HDG	Steel HDG
112-85	1.5" to 3.5" dia.	1.5" to 3.5" dia.	Steel HDG	Steel HDG
112L-85	2.25" to 5" dia.	2.25" to 5" dia.	Steel HDG	Steel HDG
112M-85	1.5" to 3.5" dia.	2.25" to 5" dia.	Steel HDG	Steel HDG
126-85	1.5" dia.	1.5" to 2.4" dia.	Aluminum	Steel HDG
167-85	1.5" dia.	0.75" to 2.375" dia.	Steel HDG	Steel HDG
167B-85	0.75" dia.	0.75" to 2.375" dia.	Steel HDG	Steel HDG

HDG=Hot Dip Galvanized



112-85 112L-85 112M-85



107-85



126-85



167-85 167B-85