

**BASE STATION ANTENNAS**

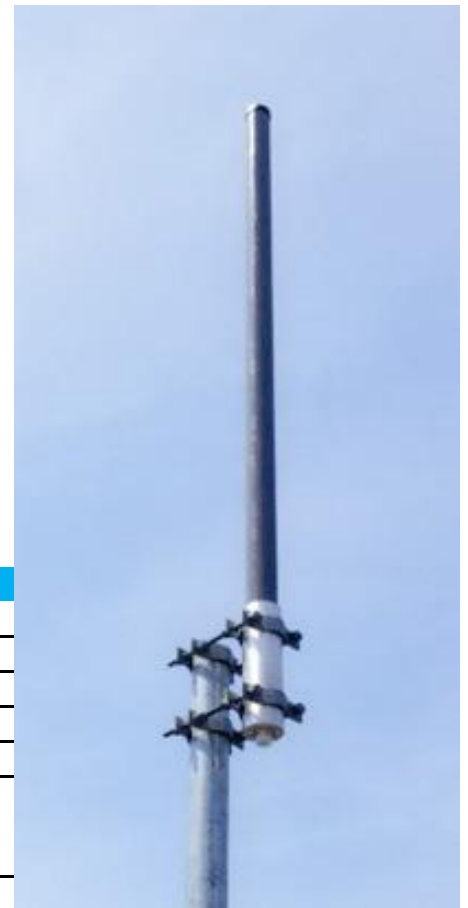
**924-70-5.5-DF\*4**

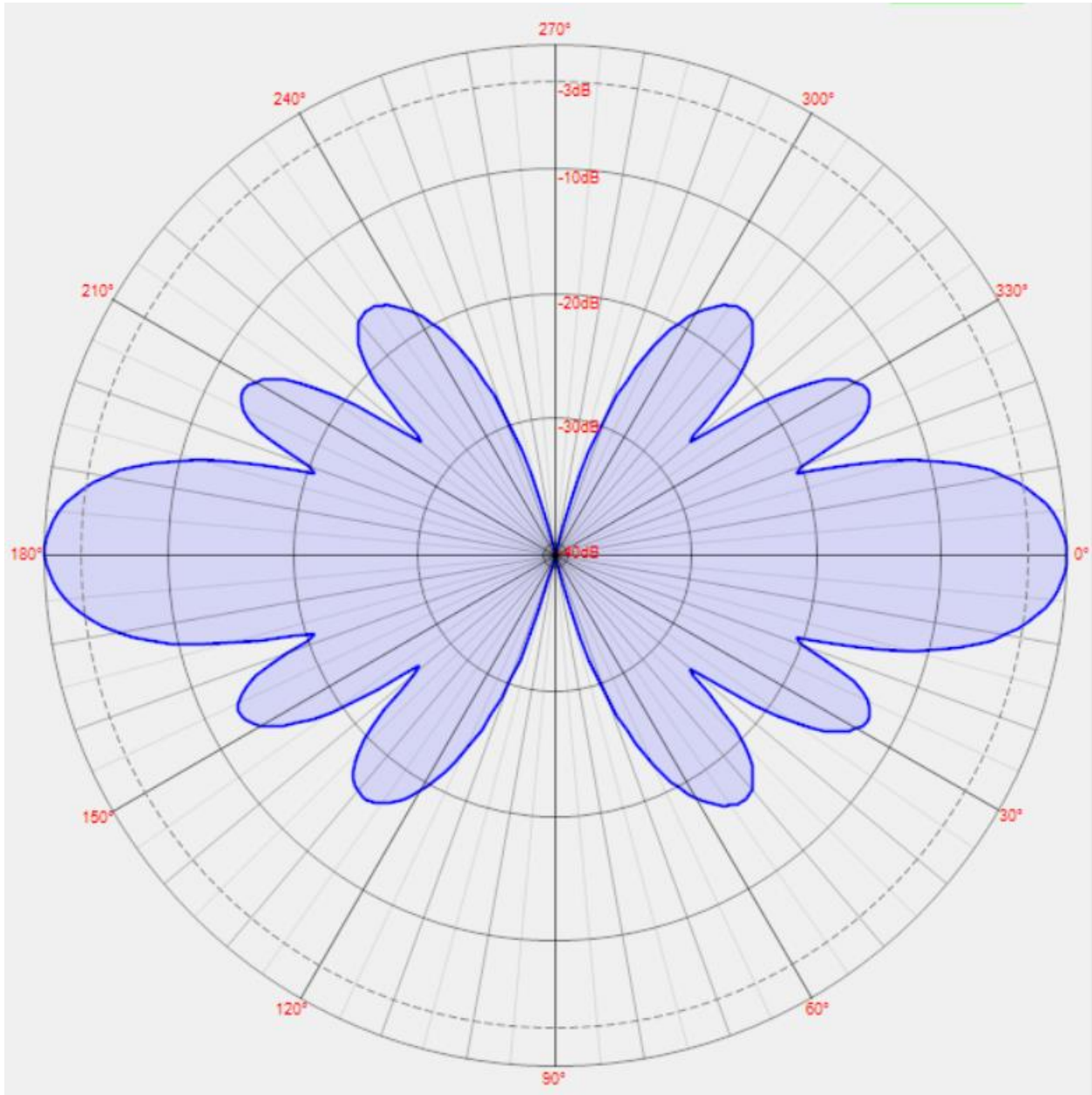
The Null Fill is optional, the Down tilt degrees available from 1 to 10 in one degree increment.

Electrical Specifications		924-70-5.5-DF*4	
Frequency Range	Detail	*4	430-450 MHz
		*3	470-490 MHz
		*2	450-470 MHz
		*1	400-420 MHz
Gain	5.5 dBd		
VSWR (Return Loss)	<1.5:1 (14dB)		
Passive IM 3 <sup>rd</sup> Order (2x20W)	-150 dBc		
Peak Instantaneous Power (PIP)	25 kW		
Power Input	500 W		
Vertical Beamwidth	20°		
Horizontal Beamwidth	Omni +/-0.25 dB		
Input	7/16 DIN Female		

Mechanical Specifications		924-70-5.5-DF*4	
Configuration	Collinear Dipole		
Length	80"		
Radome Diameter	2.5"		
Weight	8 lbs		
Shipping Weight	15 lbs		
Shipping Dimensions	L	83"	
	W	4"	
	H	4"	
Mounting Area	12.0" x 3.0" diam. aluminum		
Suggested Clamps (not included)	107-85		

Environmental Specifications		924-70-5.5-DF*4	
Operating Temperature	-58° to +140°F (-50°C to 60°C)		
IP Rating	66		
Projected Area	0.84 ft2 (no ice)		
	1.12 ft2 (with ice)		
Lateral Thrust @ 100mph	33 lbs.		
Wind Gust Rating	150 mph		





Standard Elevation Pattern