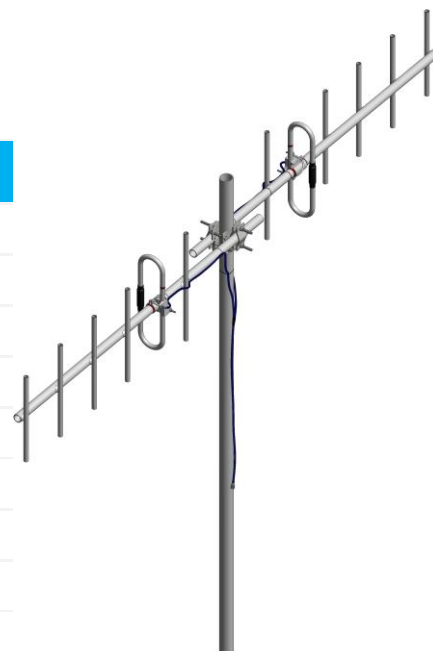


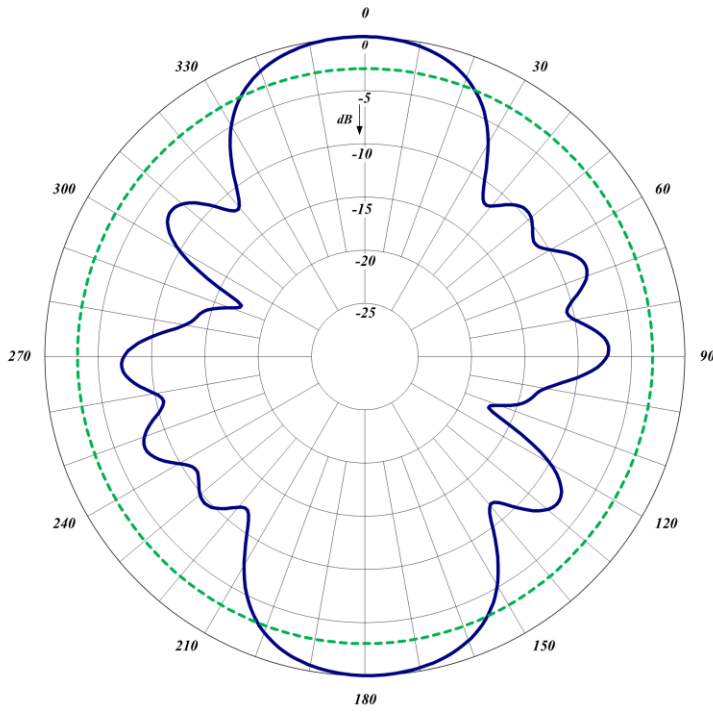
F-33324

The F-33324 is a dual yagi array mounted in a back-to-back configuration. The antennas are welded and are supplied with phasing harness. All of our antennas can be completely customized to your particular applications. Our antennas can be Vertically or Horizontally Polarized.

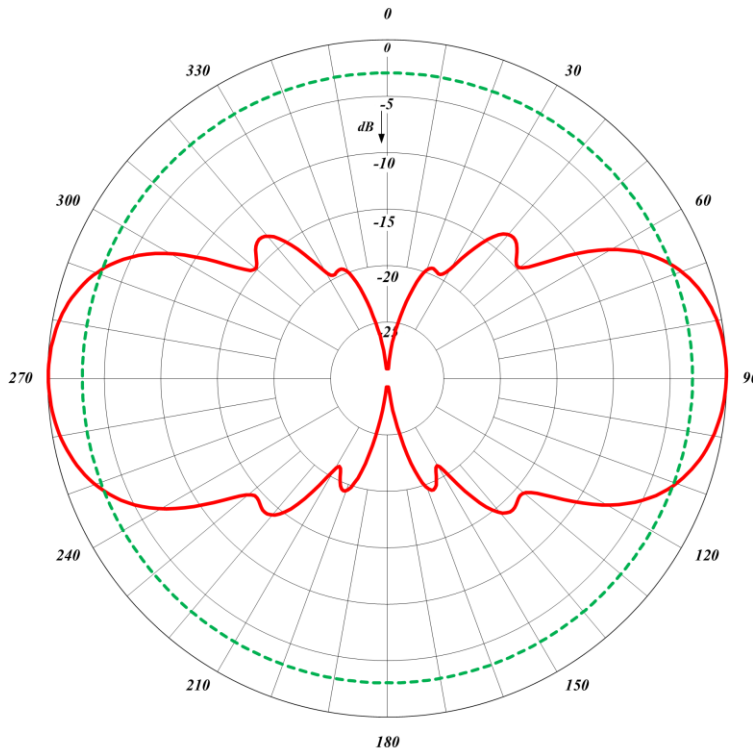
- Each antenna has a rugged design to withstand harsh environmental conditions.
- The mounting hardware supplied will permit either vertical or horizontal polarization.
- Heavy duty versions are available.
- DC ground for lightning protection.

Electrical Specifications	F-33324
Frequency Range, MHz	215-225
Nominal Gain, dBd	9.5
Polarization	Vertical or Horizontal
Horizontal Beamwidth (Ver. Pol)	39°
Vertical Beamwidth (Ver. Pol)	45°
Bandwidth 1.5:1 VSWR, MHz	10
Pattern	Bidirectional
Power Rating, Watts	350
Nominal Impedance, Ohms	50
Lightning Protection	DC Ground
Standard termination	N-Male
Mechanical Specifications	F-33324
Length, in (mm)	161 (4089)
Width, in (mm)	27 (686)
Weight, lbs. (kg)	28 (12.7)
Rated Wind Velocity, No Ice, mph (km/h)	145 (233)
Rated Wind Velocity, 0.5" (13mm) ice, mph	100 (161)
Lateral Thrust @ 100 mph, wind, lbs. (N)	27 (119)
Bending Moment @ top clamp: 100 mph,	94 (41.8)
Projected Area, ft ² (m ²)	4 (0.37)
Mounting Information	115R-85 Clamp





F-33324 horizontal pattern



F-33324 vertical pattern

