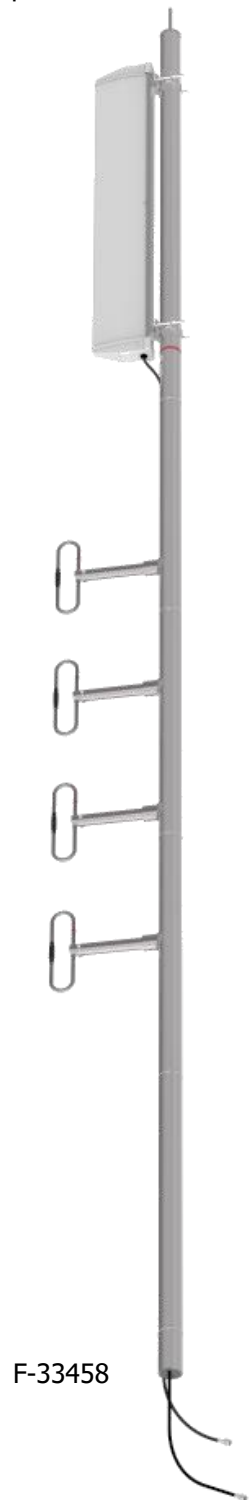


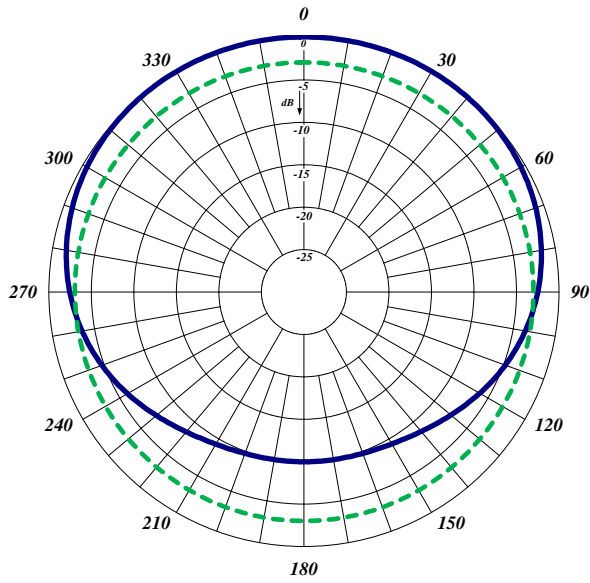
F-33458

The F-33458 is a dual array UHF/800 MHz Dipoles antenna. The bottom antenna is a UHF 774-70 and the top one is an 800MHz 794-70. This antenna is designed to be mounted on the top of a tower.

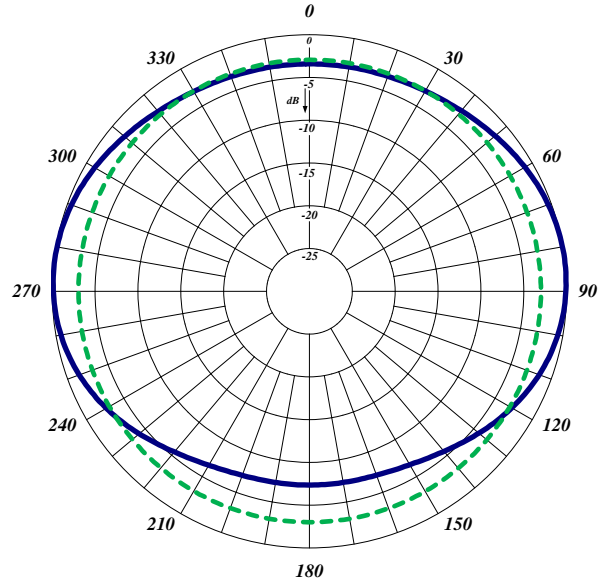
Electrical Specifications	774-70	794-70
Frequency Range, MHz	406-512	746-960
Nominal Gain, dBd	8.0-8.5	8
Number of Dipoles	4	4
Bandwidth 1.5:1 VSWR, MHz	106	214
Polarization	Vertical	Vertical
Pattern	Offset/Bi	Offset
Power Rating, Watts	300	300
Nominal Impedance, Ohms	50	50
Lightning Protection	DC Ground	DC Ground
Standard Termination	Type NM	Type NM
Mechanical Specifications	F-33458	
Length, in (mm)	218 (5537)	
Width (1/2 Wave Spacing), in. (mm)	16 (407)	
Weight, lbs. (kg)	70 (32)	
Rated Wind Velocity, No Ice, mph (km/h)	110 (177)	
Rated Wind Velocity, 0.5" (13mm) ice, mph (km/h)	95 (153)	
Lateral Thrust @ 100 mph, wind, lbs. (N)	219 (971)	
Bending Moment @ top clamp: 100 mph, ft.*lb (N*m)	1891 (2564)	
Projected Area, ft ² (m ²)	8.1 (0.75)	
Mounting Information Mast O.D., in. (mm)	2.9 (74)	



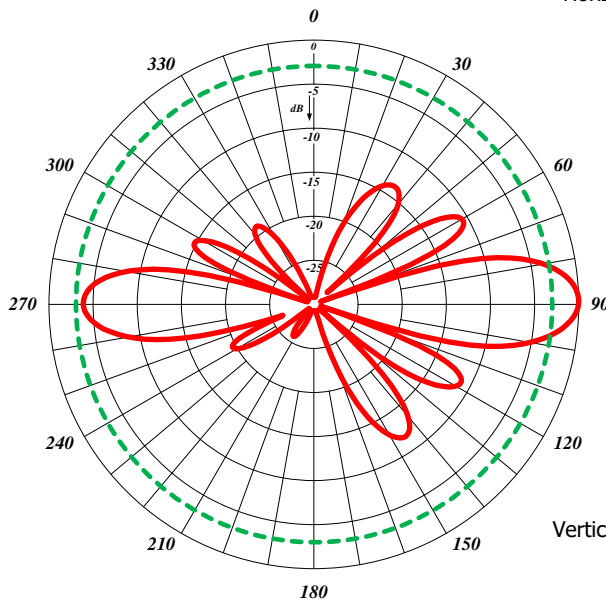
F-33458



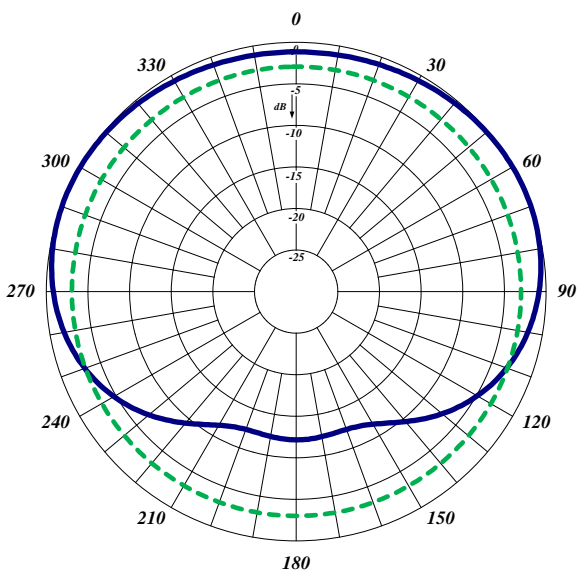
Horizontal offset; 406-512MHz



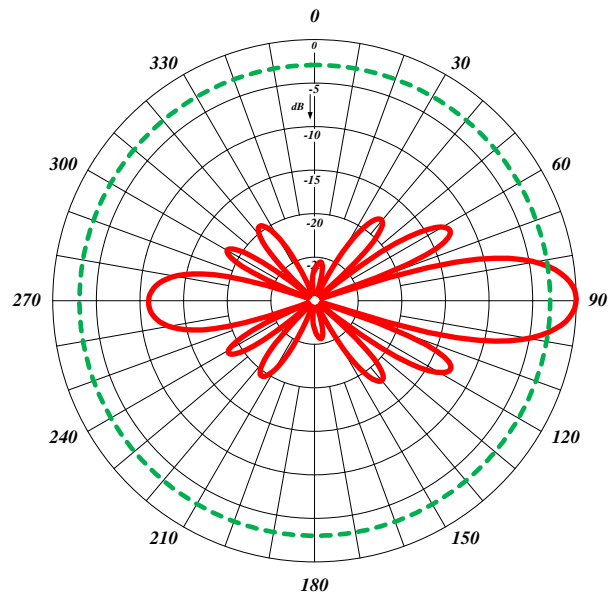
Horizontal bidirectional; 406-512MHz



Vertical; 406-512MHz



Horizontal 764-960MHz



Vertical 764-960MHz